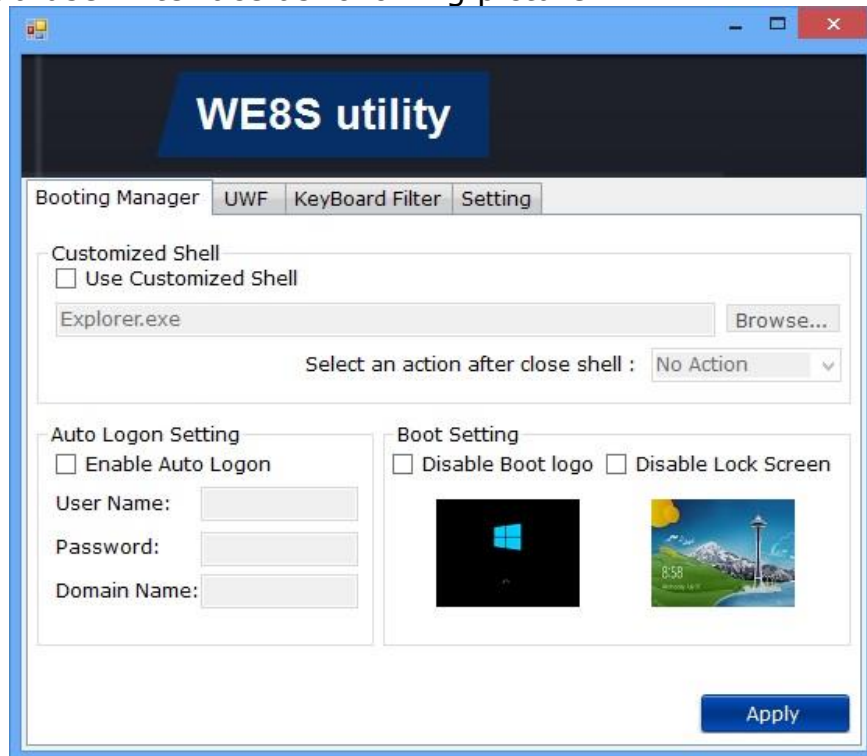
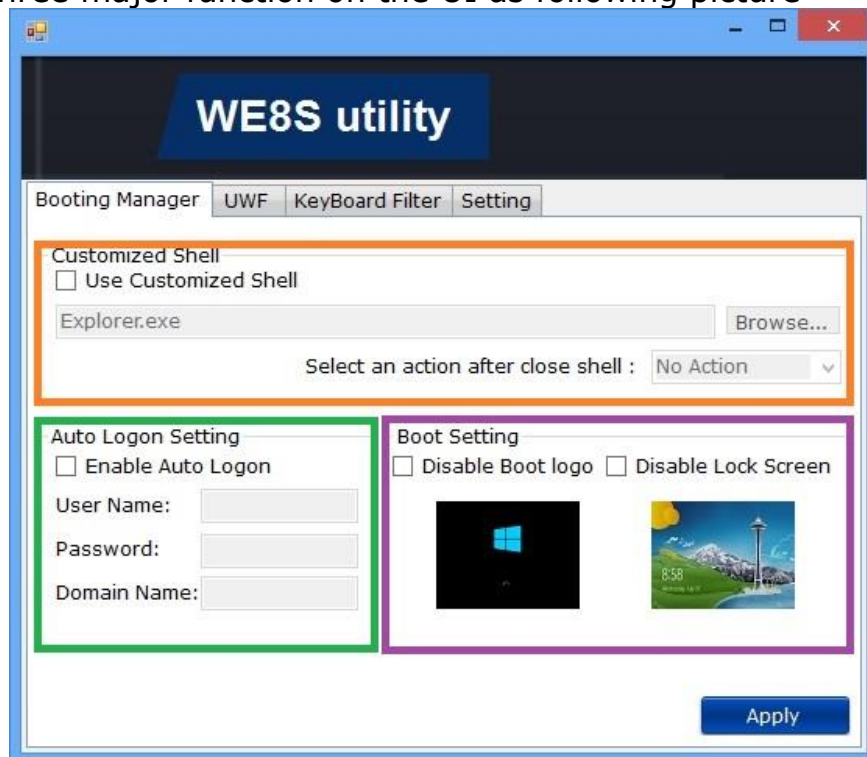


Booting Manager

You will get a user interface as following picture

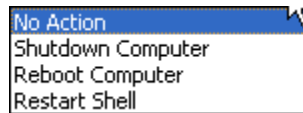


There are three major function on the UI as following picture

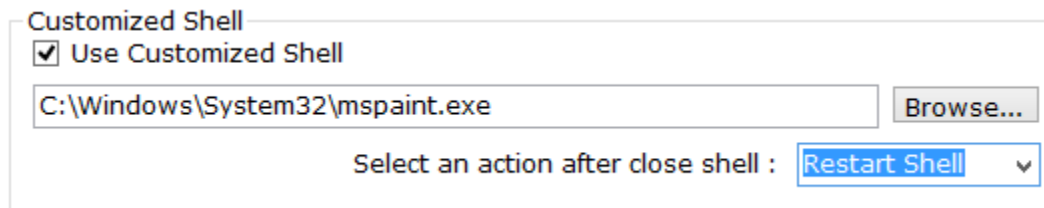


1. Customized Shell

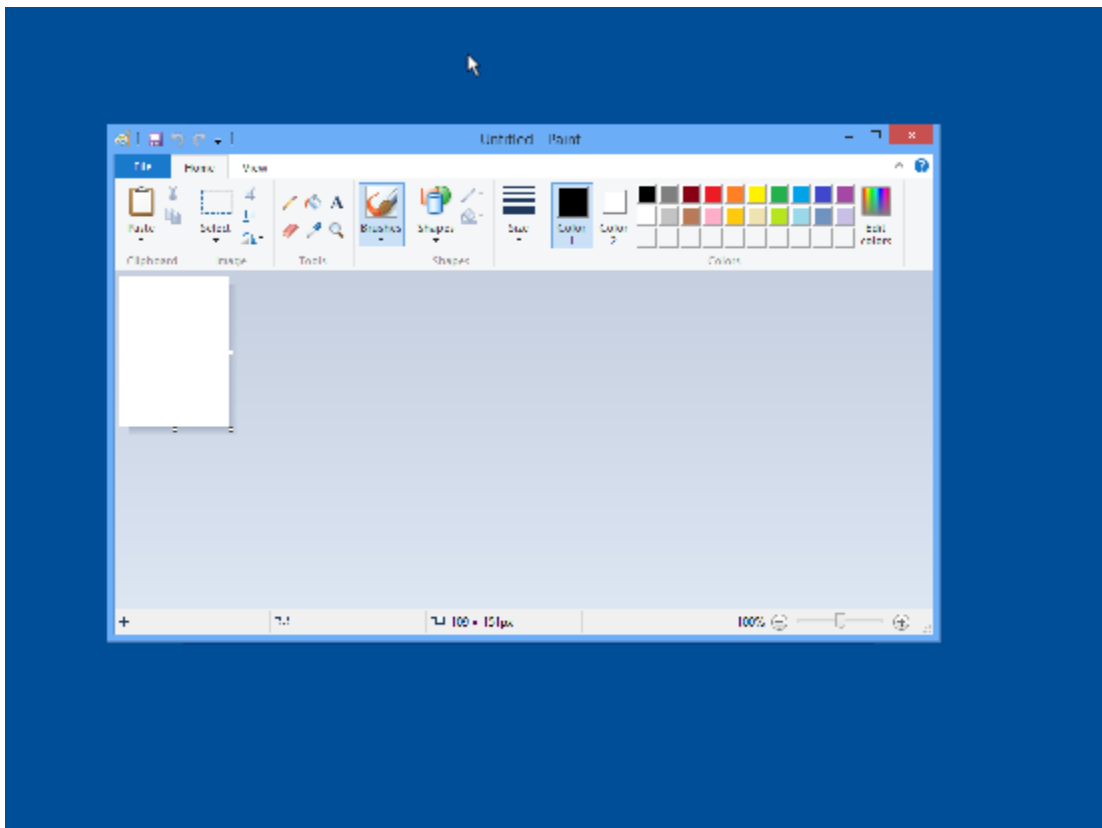
- i. Use Customized Shell: The function can run any exe file when you check Use Customized Shell
Its default setting is "Explorer.exe"
- ii. Select an action after closing shell: if you close the above exe file it will run. It maybe is **No Action**, **Shutdown Computer**, **Reboot Computer**, and **Restart Shell**



EX : If your setting is like following picture and reboot.



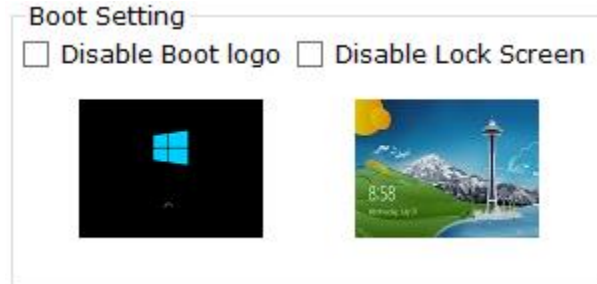
OS will run freecell.exe directly as following picture.
Even you close freecell.exe, OS will restart freecell.exe



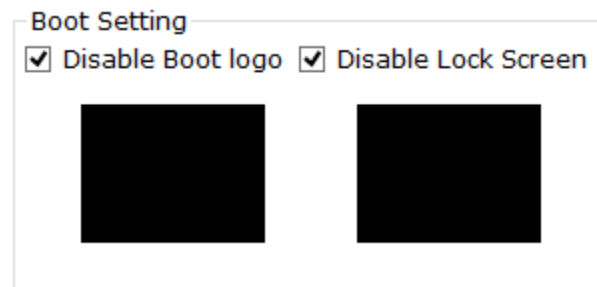
2. Boot Logo Setting

- i. Check "Disable Boot Logo"
- ii. Check "Disable Lock screen"

Its default value is following picture



EX : If you setting disable.

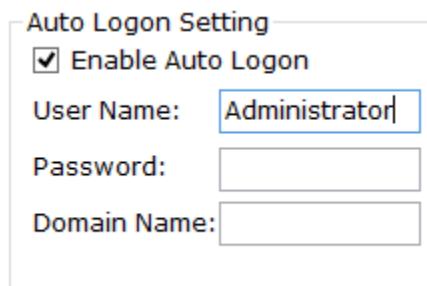


Your OS boot logo or lock screen will disable.

3. Auto Logon Setting

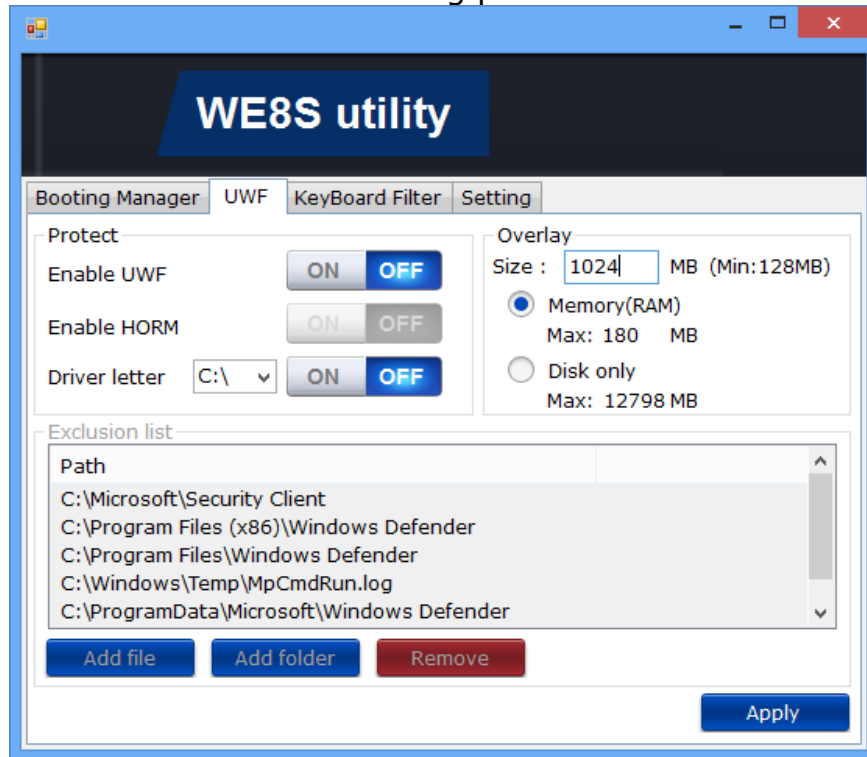
- i. Enable Auto Logon : if you check the function OS will logon your **User Name, Password, and Domain Name**

EX : If you want to logon OS by using "Administrator", you can set it as following picture



UWF (Universal Write Filter) Manager SOP

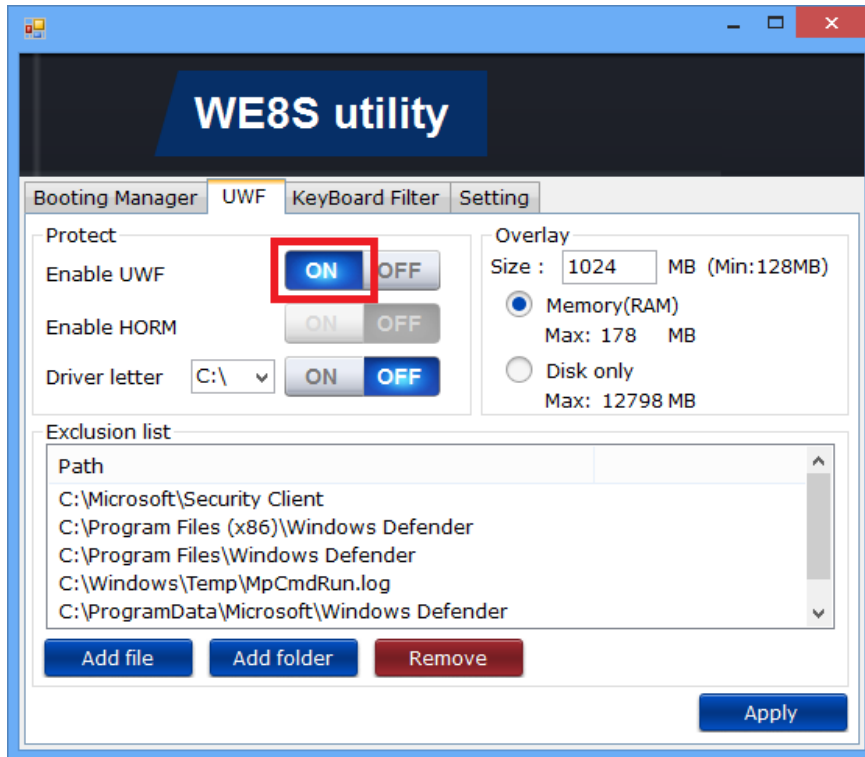
You will get a user interface as following picture



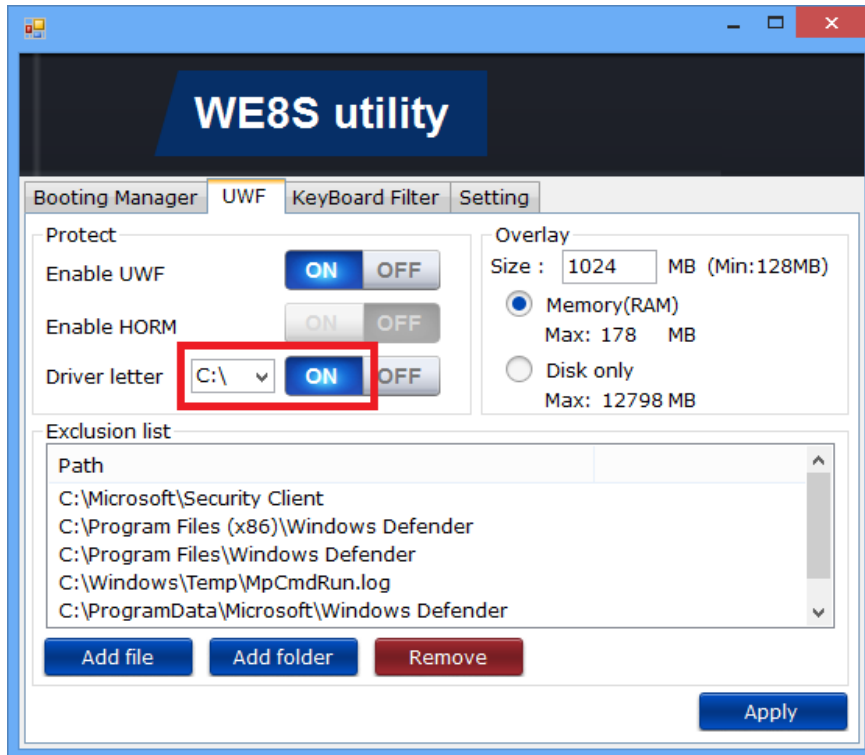
1. Protect function : If you want to protect your OS you can enable UWF. It will protect your OS after restarting OS. And if you create new partition (Ex:"D:\\"), please protect new partition once. Then you can add exclusion list.
2. Overlay function : You can set overlay size and type.
3. Exclusion list : You can add file or folder to exclusion list.
4. HORM(Hibernate Once and Resume Many) : The function can always resume your OS after hibernating, even shutdown or crash.

UWF enable method :

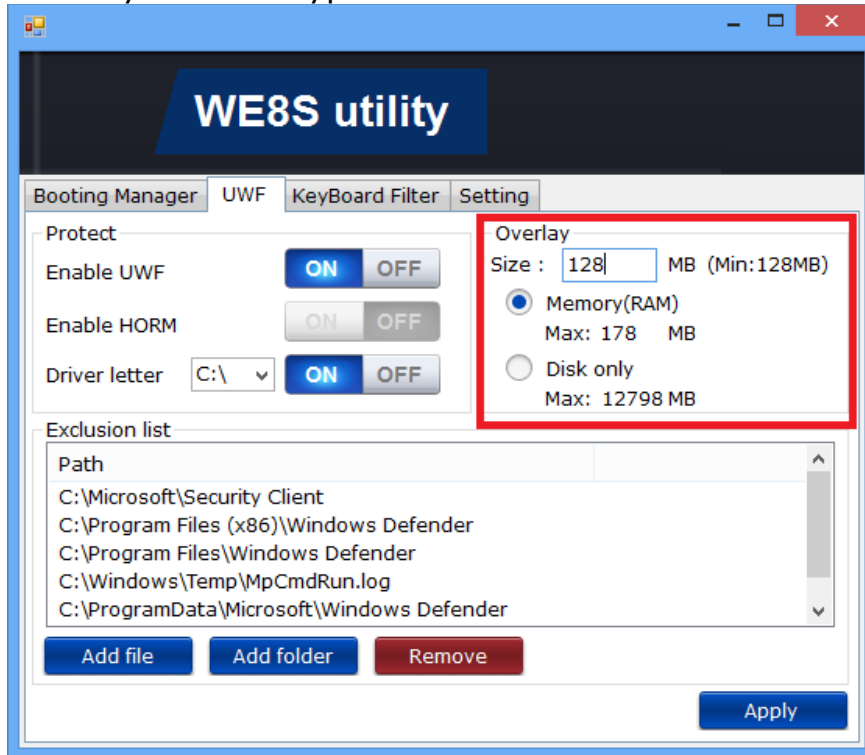
i. Enable UWF



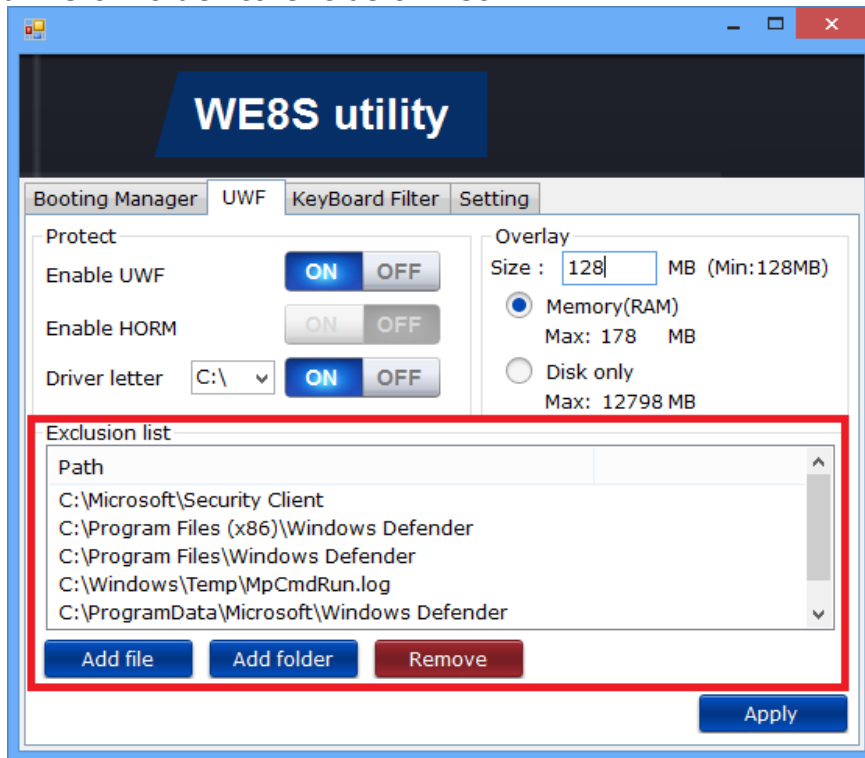
ii. Select driver letter and enable.



iii. Set overlay size and type.



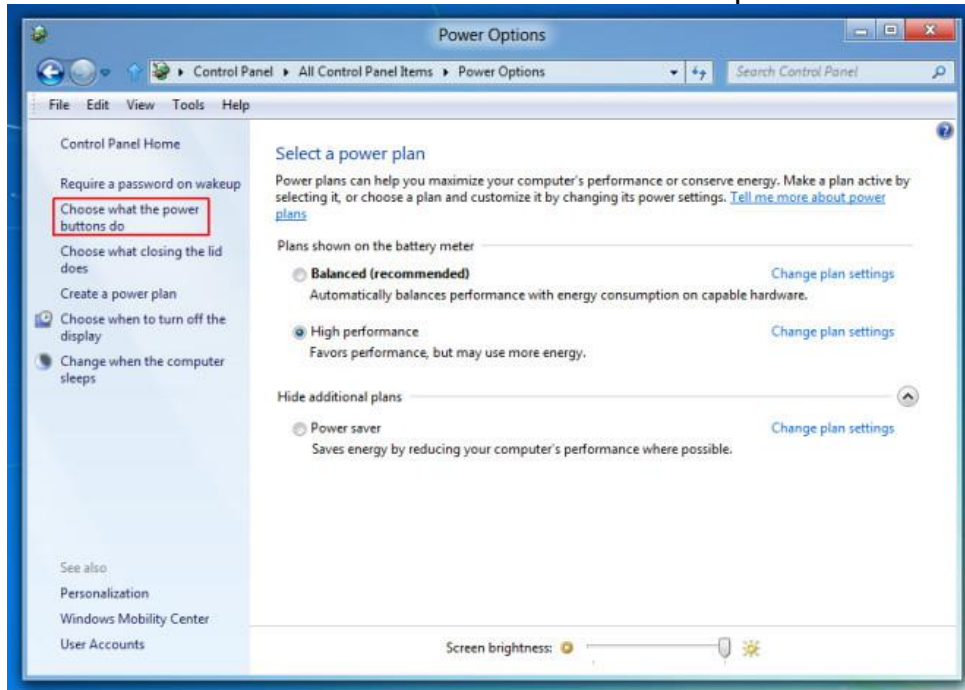
iv. Add file or folder to exclusion list.



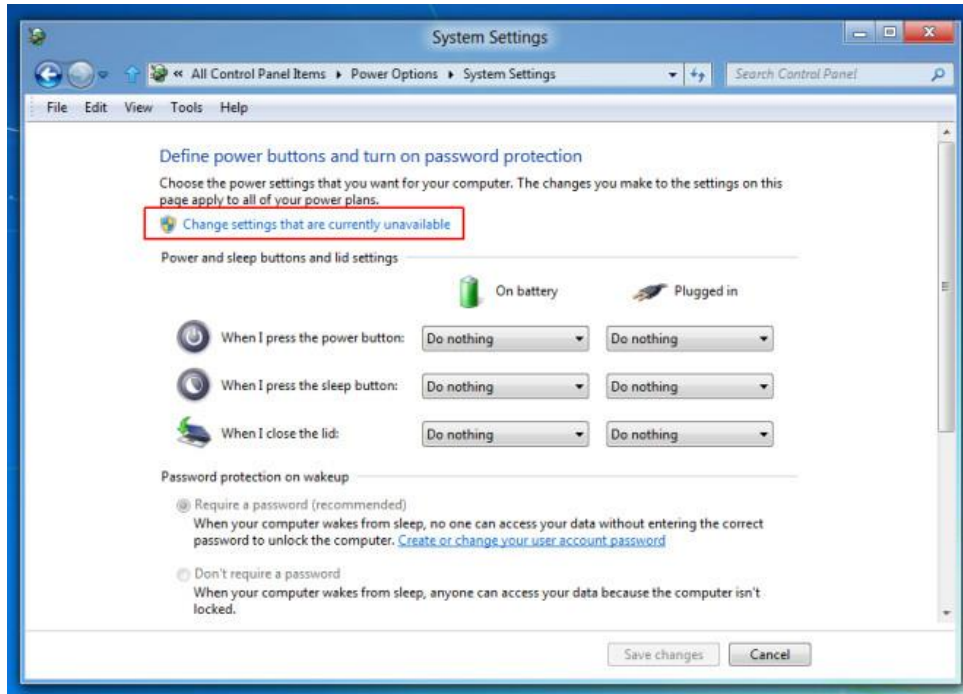
v. Click Apply and UI will request restart OS.

HORM enable method :

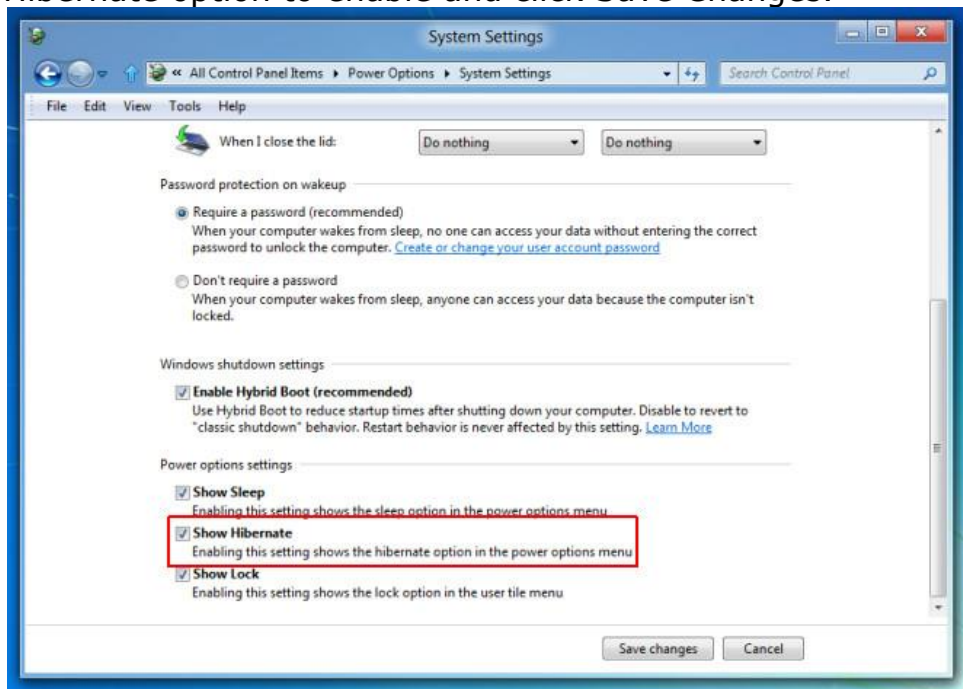
- i. To enable hibernation on your device, cmd.exe run administrator and type the following command:
powercfg /h on
- ii. In Control Panel, set the Power Option
 1. Select "Choose what the Power buttons do" option from left sidebar.



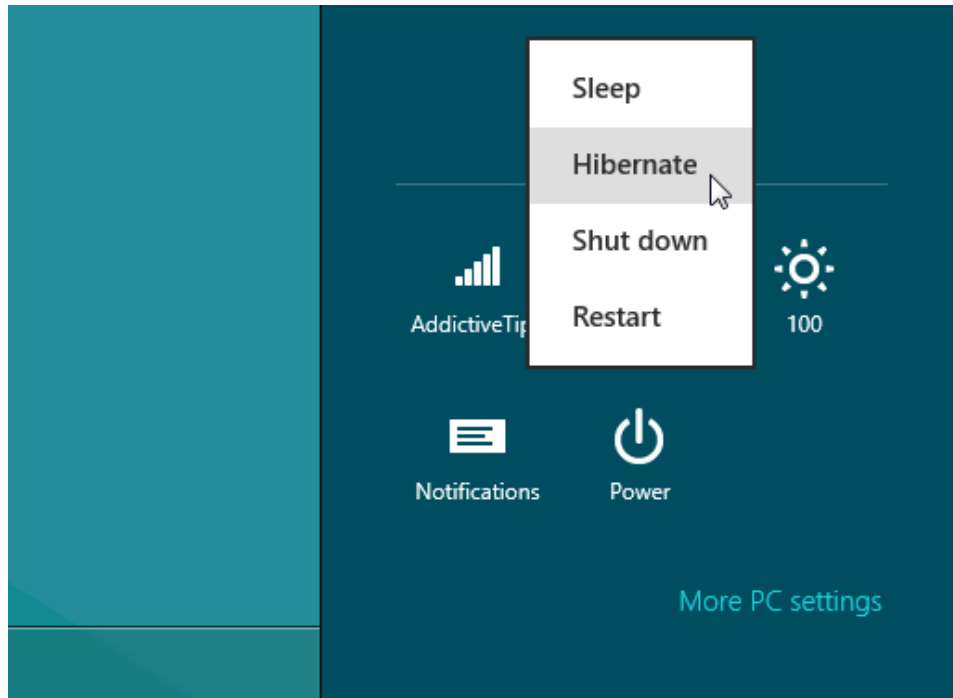
2. Select the option that says "Change settings that are currently unavailable".



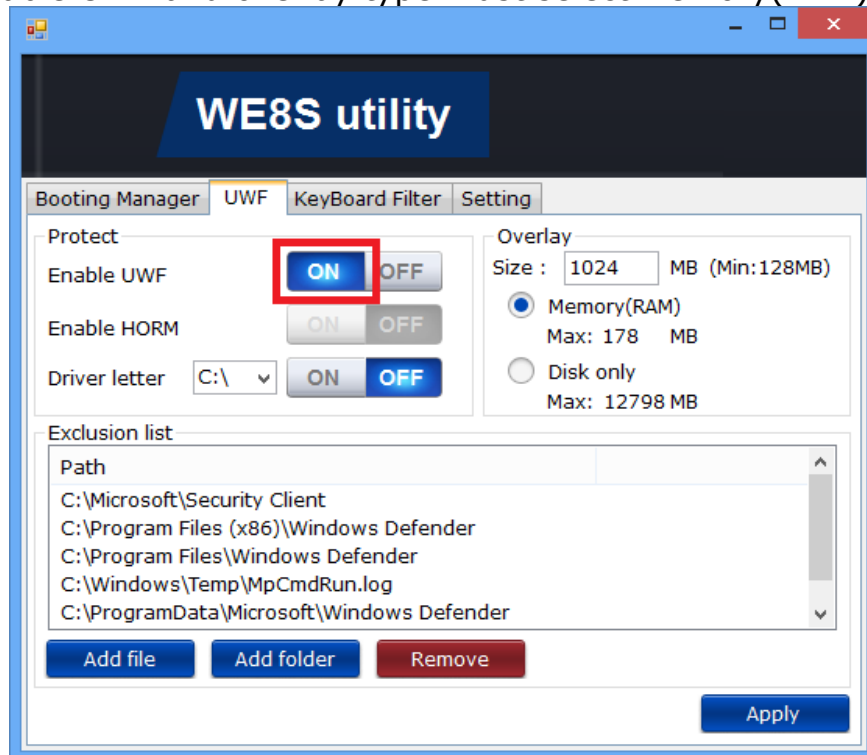
3. This will provide you with the option to enable Hibernation. Check Show Hibernate option to enable and click Save Changes.



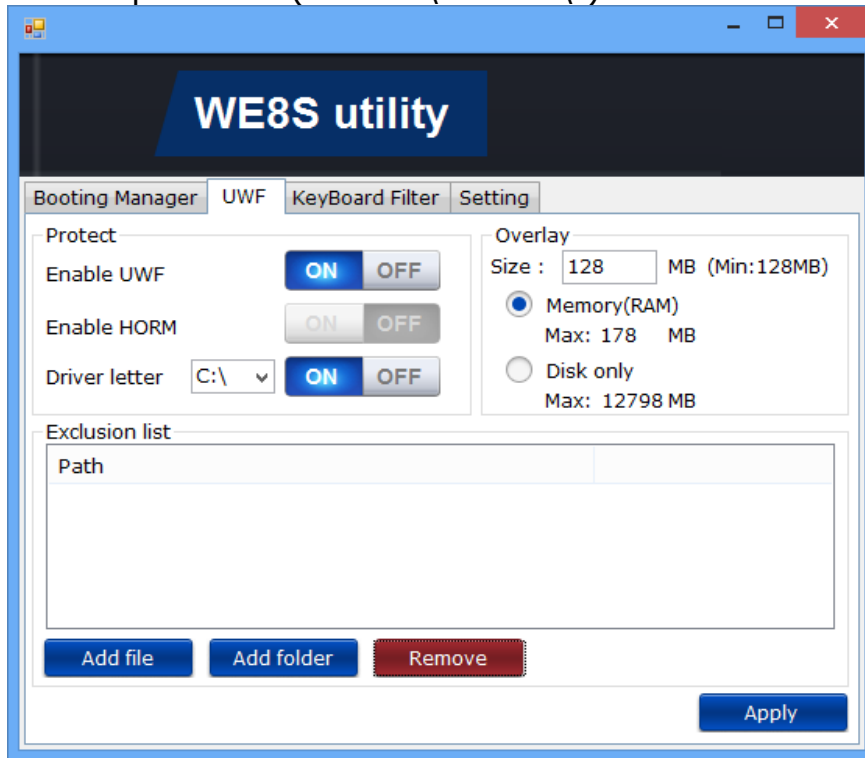
4. You will be able to Hibernate your computer from Windows 8 Power options, which can be accessed from Charms Bar.



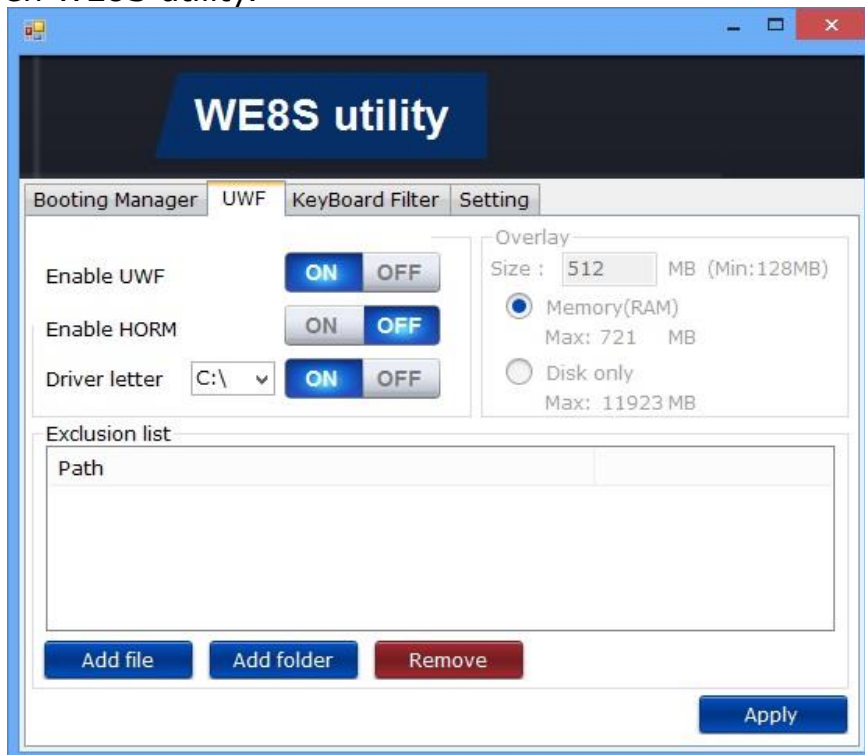
- iii. Enable UWF and overlay type must select Memory(RAM).



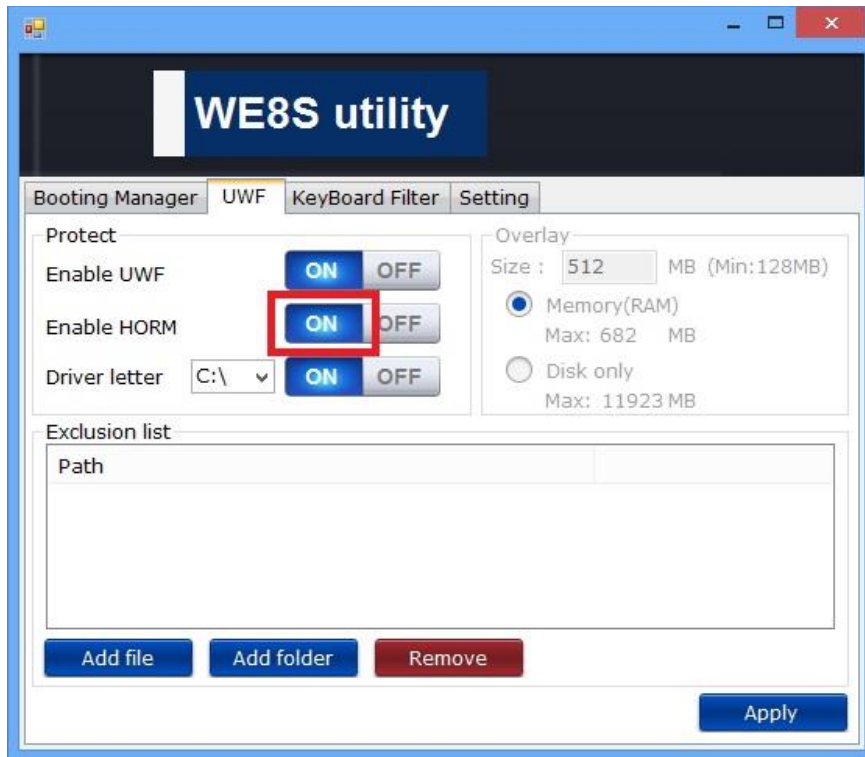
- iv. Protect C:\ and remove all exclusion lists.
- v. If more than one partition, please remove all partition exclusion lists and protect all partition. (Ex: "D:\\" or "E:\")



- vi. Click Apply and UI will request restart OS.
- vii. Open WE8S utility.

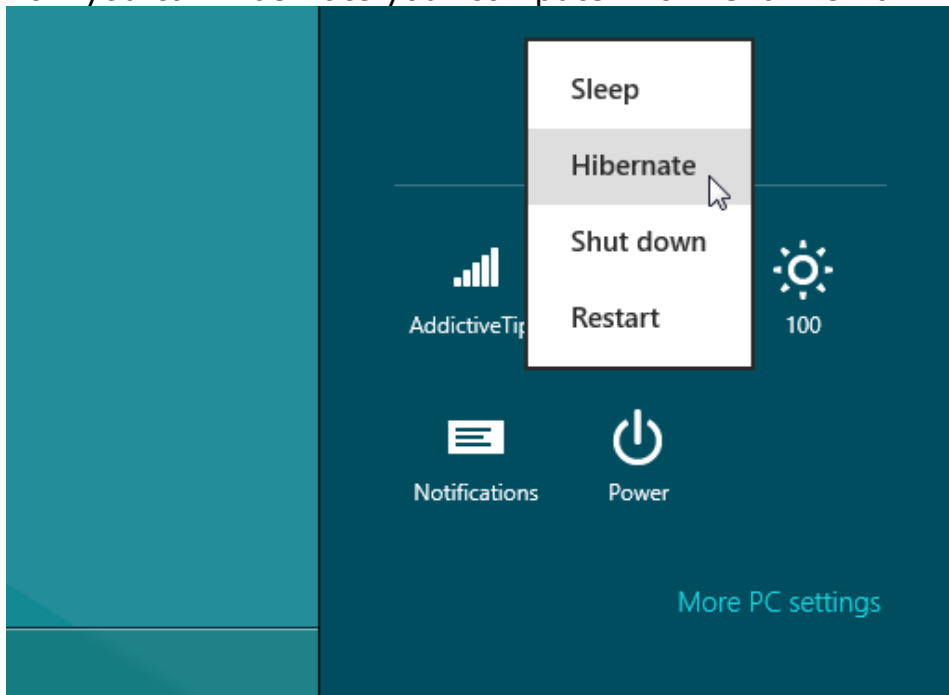


viii. Enable HORM.



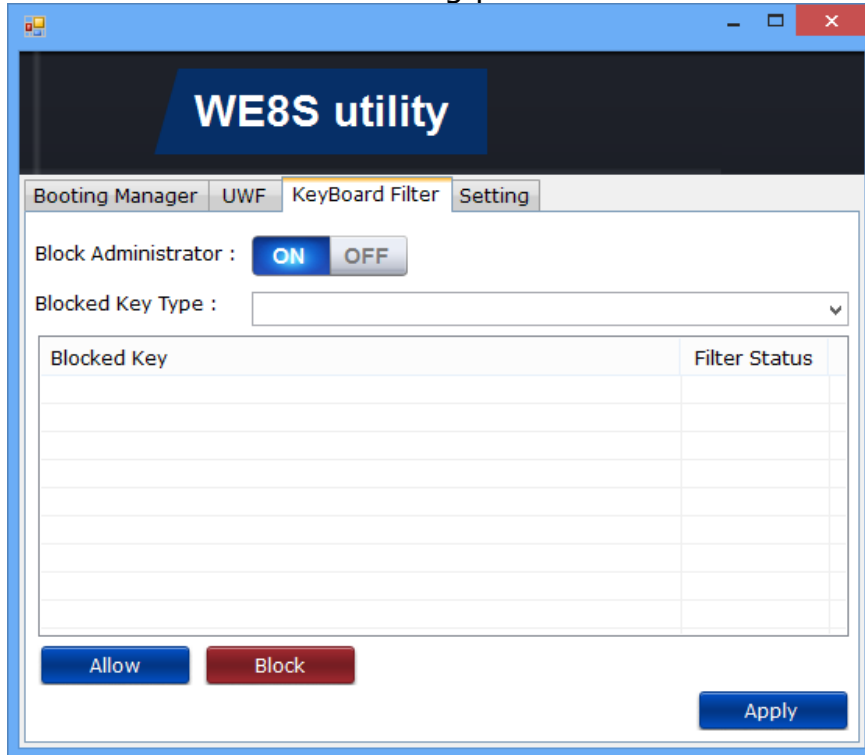
ix. Click Apply and UI will request restart OS.

x. Now you can hibernate your computer from Charms Bar.

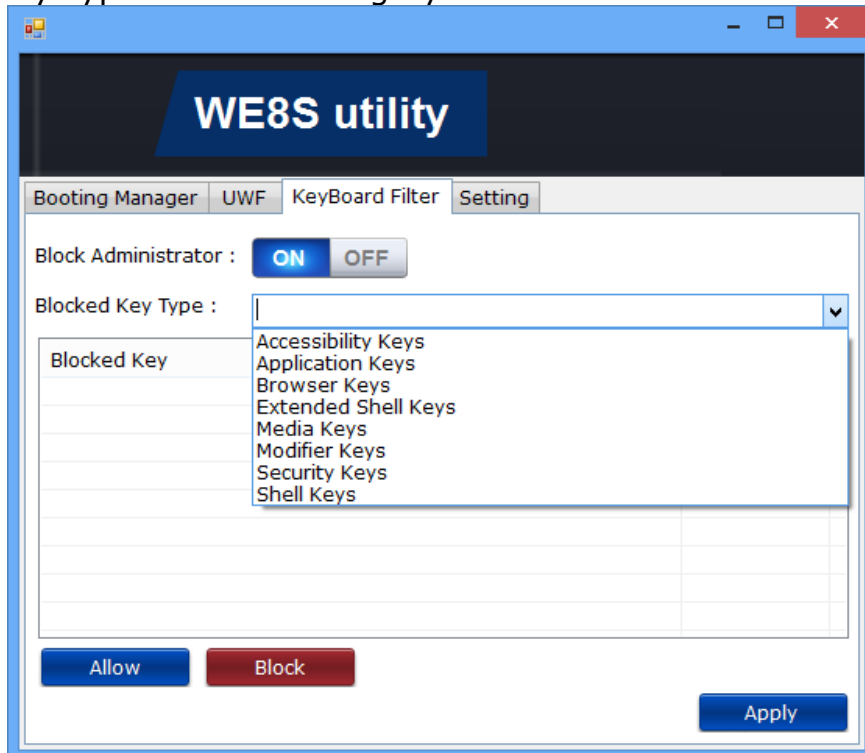


Keyboard Filter Manager SOP

You will get a user interface as following picture

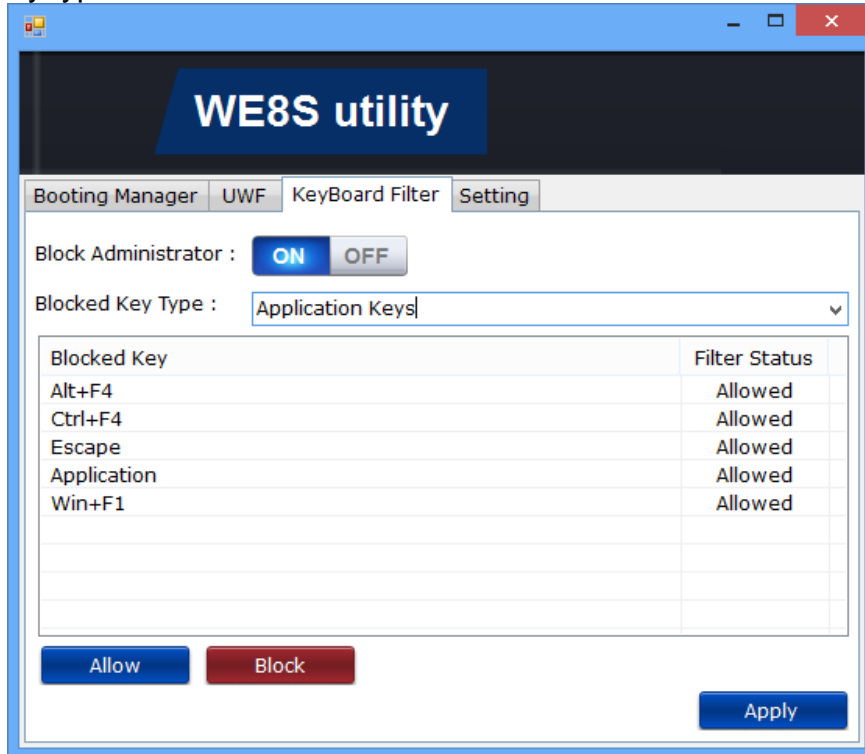


1. Block Administrator : Enable or disable block administrator(default enable).
2. Block Key Type : Default category

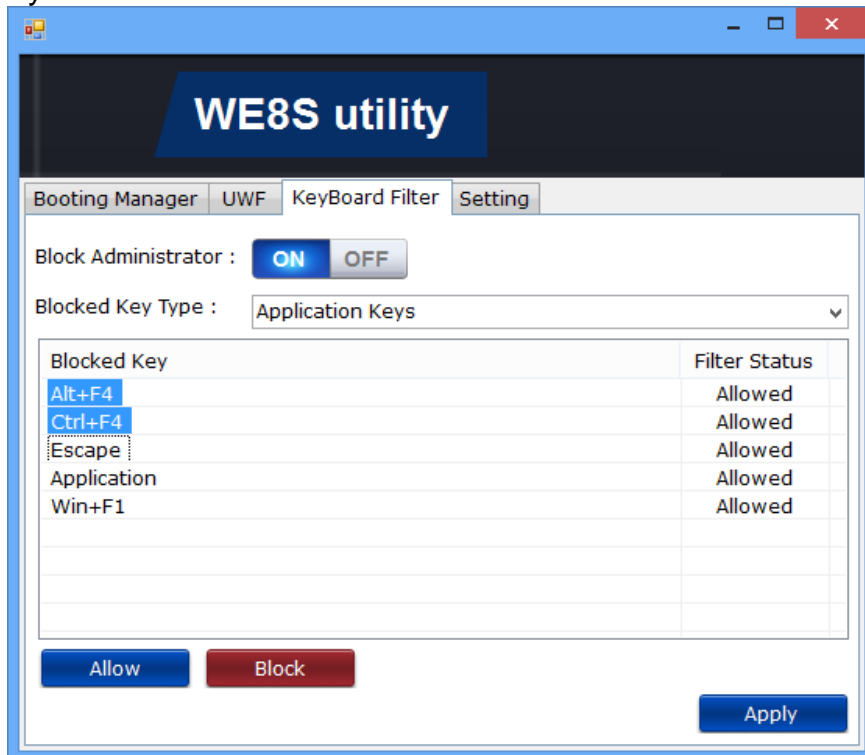


Block key:

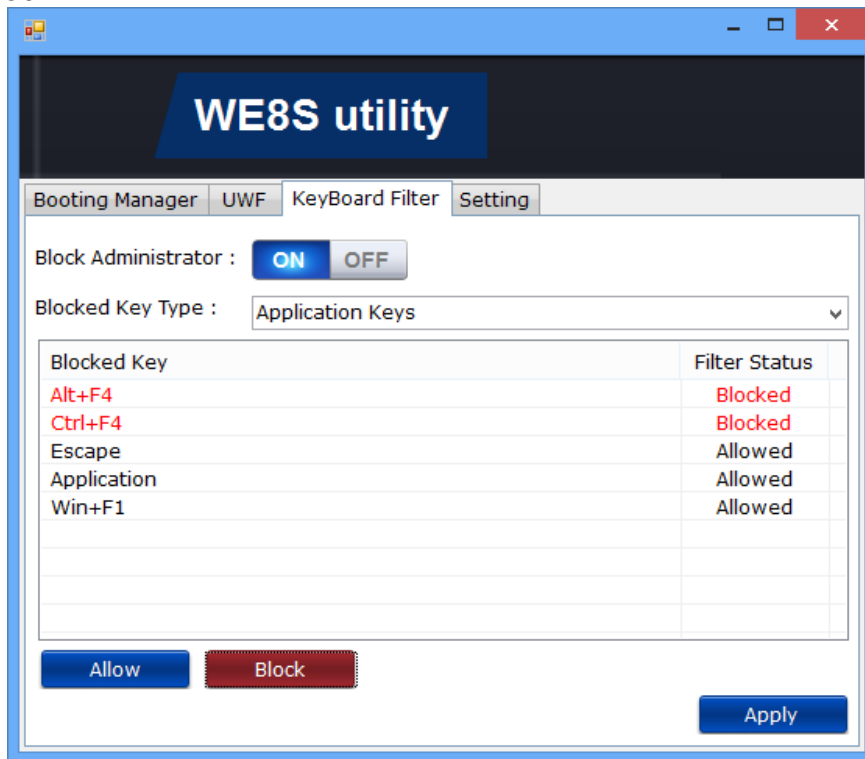
I. Select key type



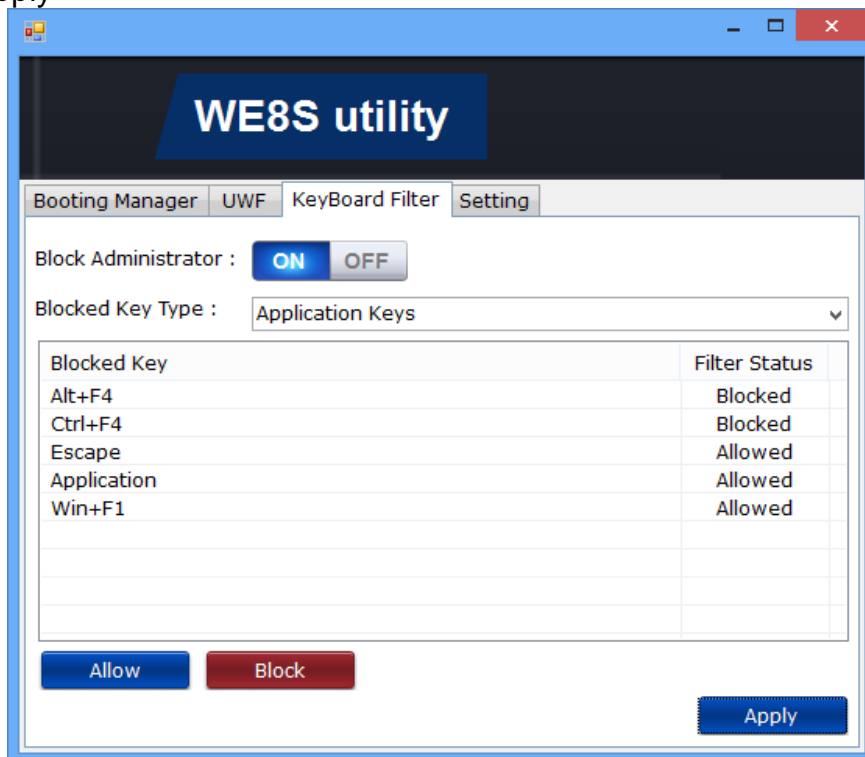
II. Select key



III. Click Block

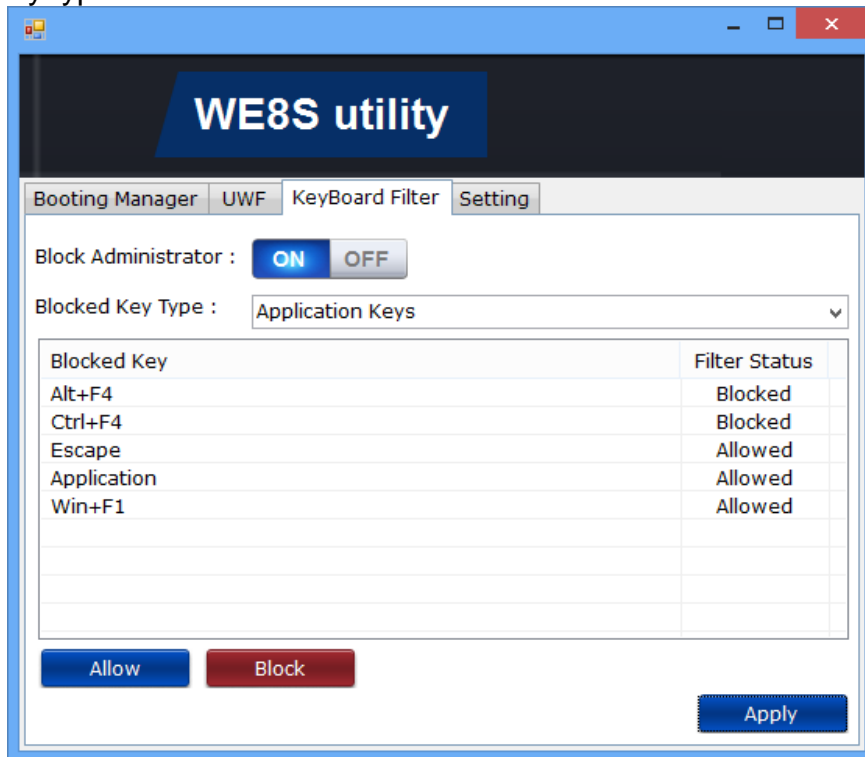


IV. Click Apply

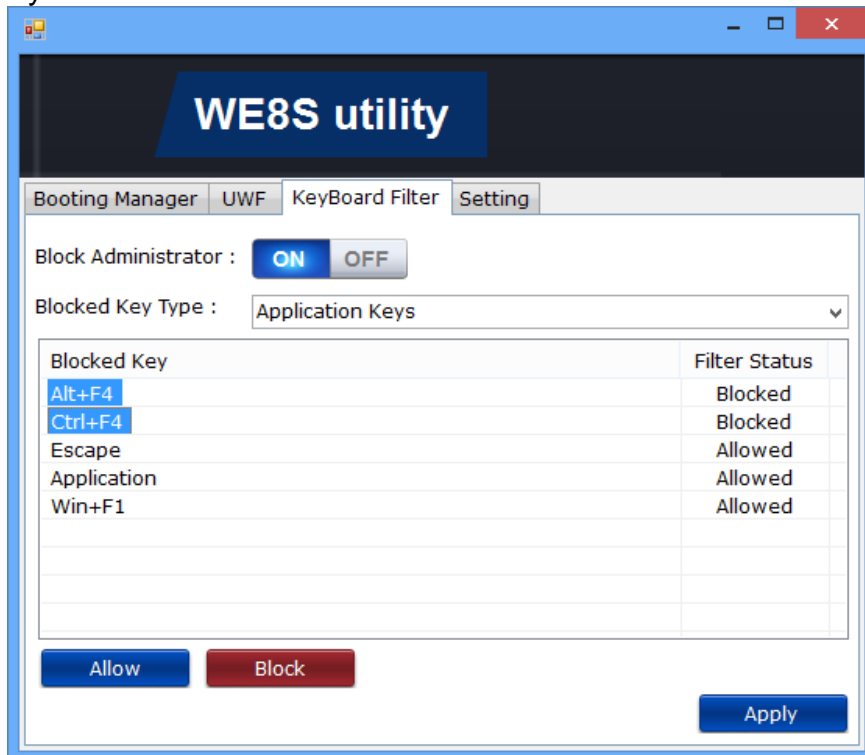


Allow key:

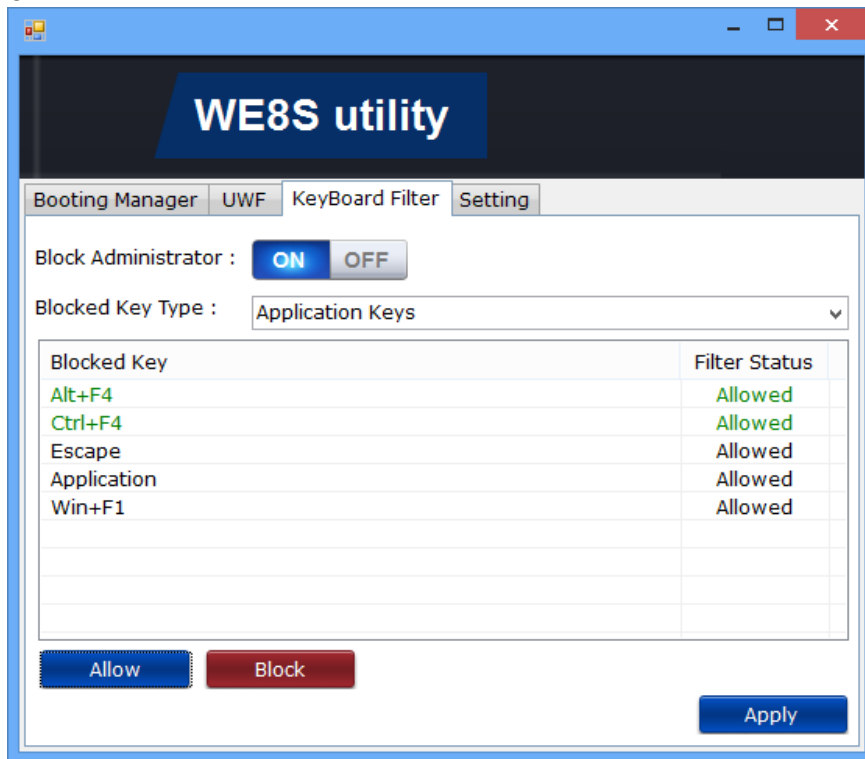
- I. Select key type



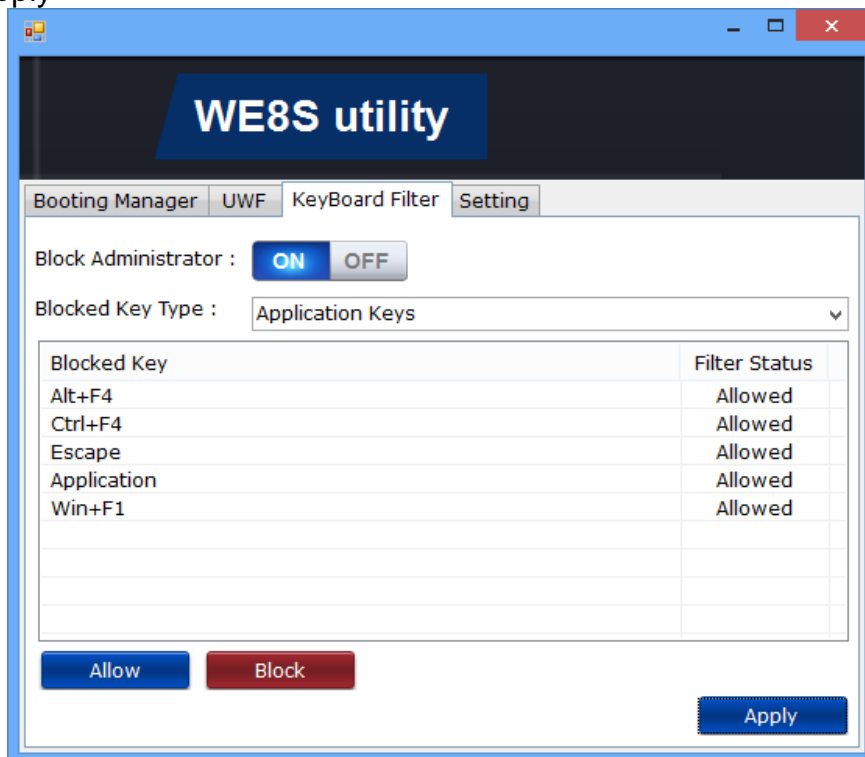
- II. Select key



III. Click Allow

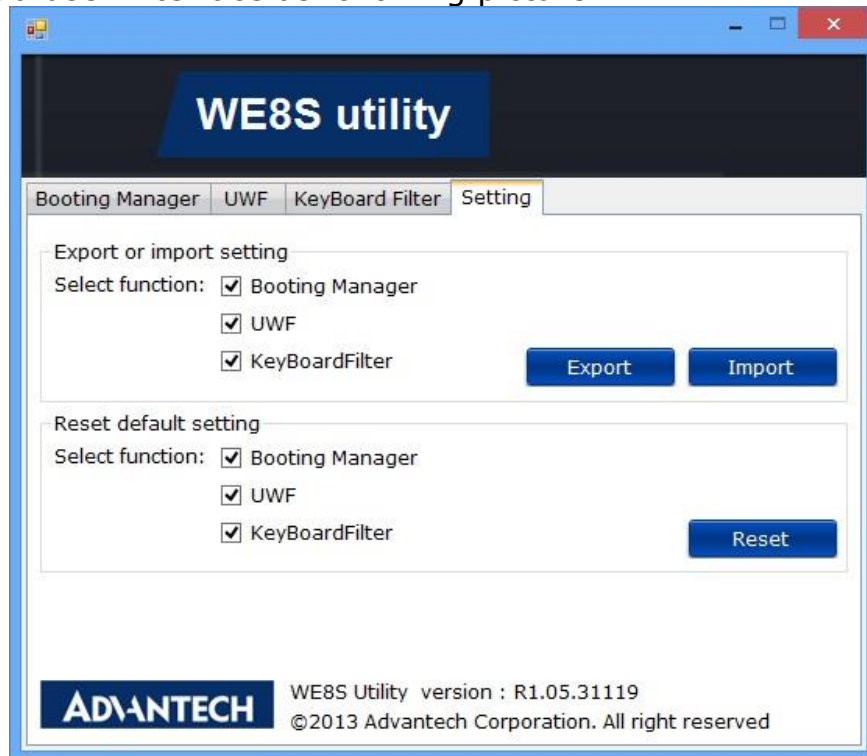


IV. Click Apply



Setting

You will get a user interface as following picture



1. Export or import setting : You can select functions export setting to ini file. And you can copy this ini file to another target platform import setting.
Note: If use UWF Import function and have create new partition (Ex: "D:\\" or "E:\\"), please protect all partition once first.
2. Reset default setting : You can select functions and reset to default setting.
Note: UWF not support reset driver letter setting.