

Language Adding Tool user menu

Main purpose:

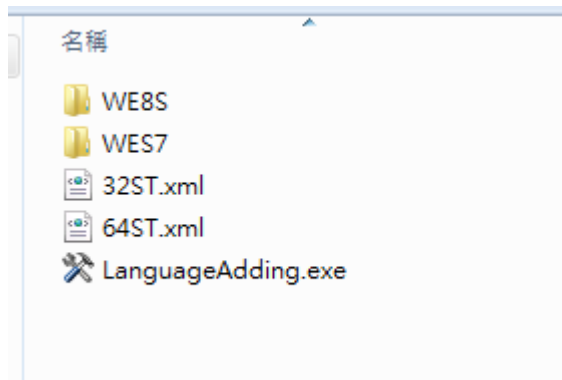
Add multi-language packages in Windows Embedded Standard 7 E-sku/P-sku and Windows Embedded 8 Standard

Requirement:

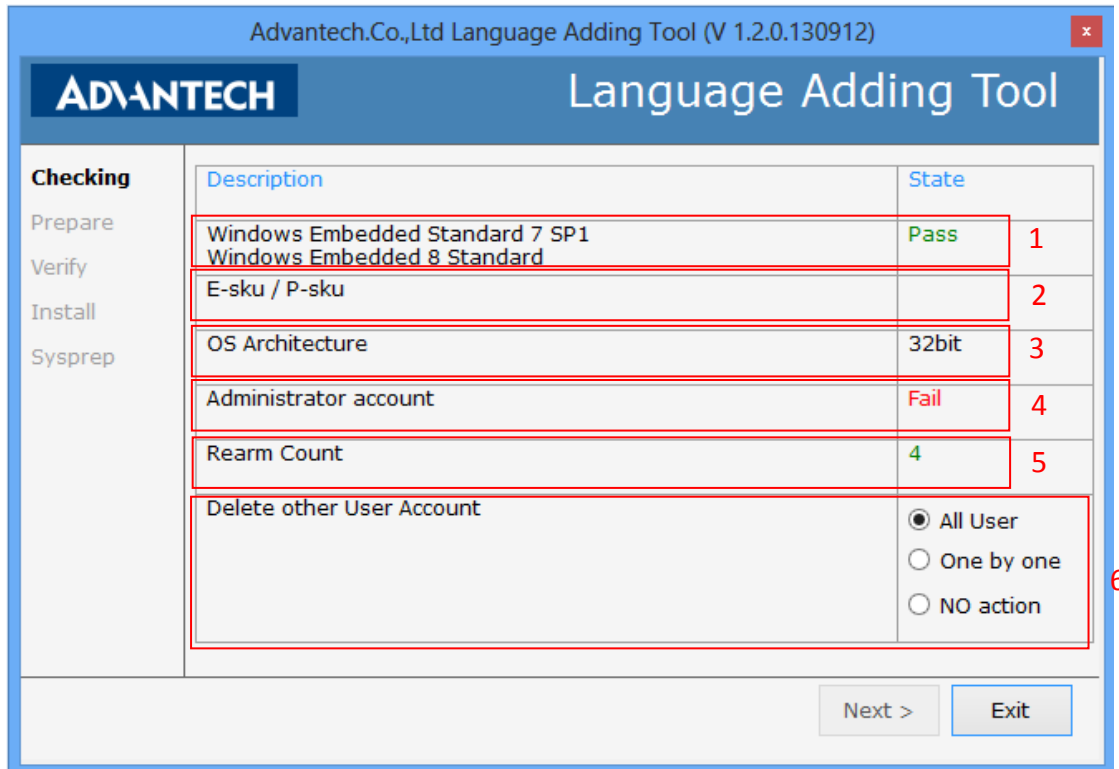
1. OS:
 - i. Windows embedded 7 SP1 E-sku/P-sku
 - ii. Windows Embedded Standard 8

Prepare:

Open the disk, then you could see the following folders and files



Please double click "LanguageAdding.exe" to start the program



Function:

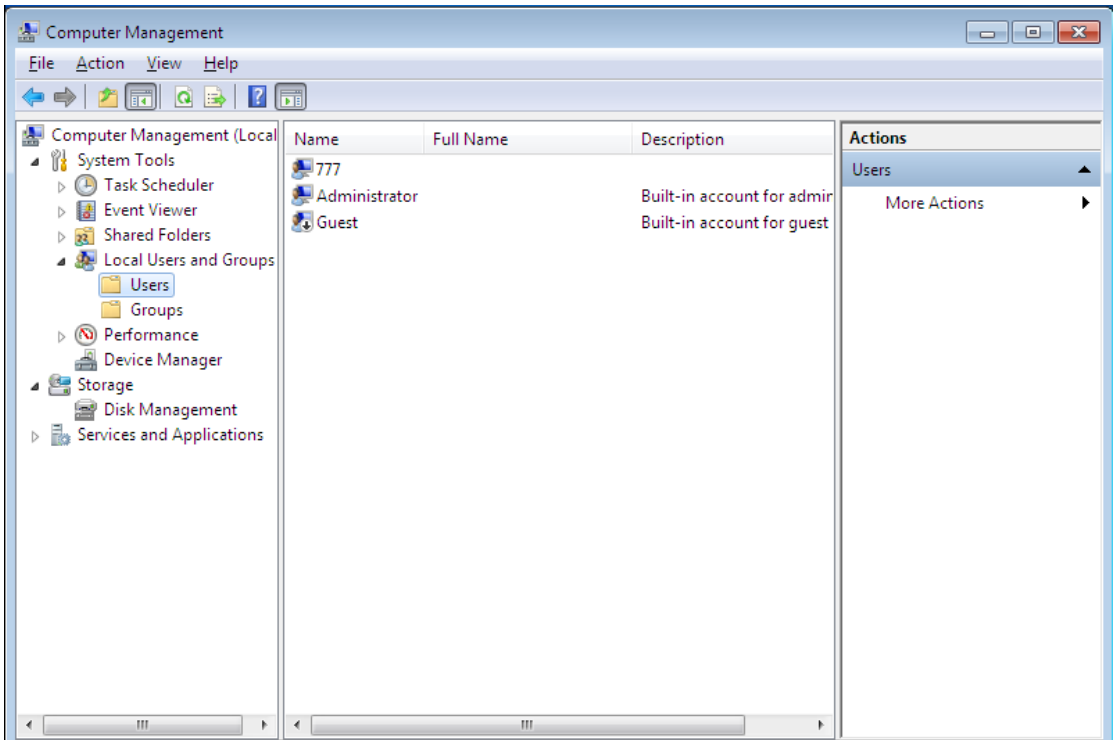
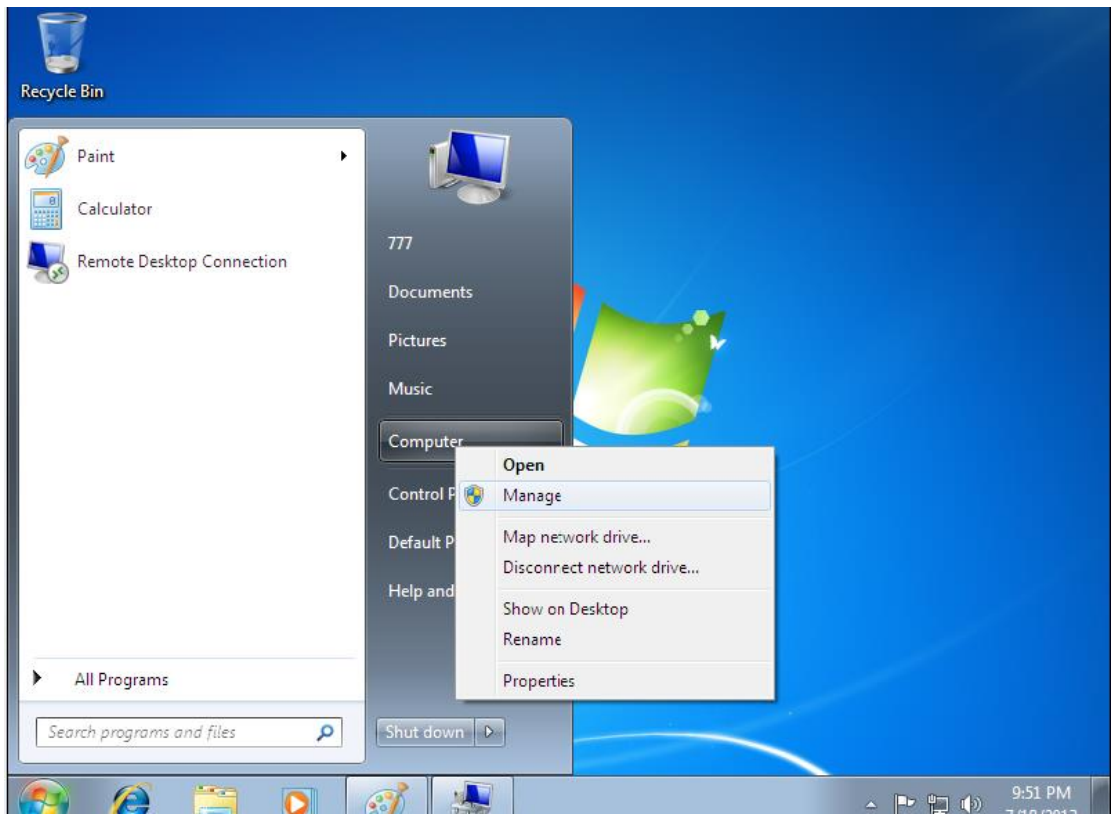
1. Check whether this operator system is Windows Embedded Standard 7 SP1, or Windows Embedded 8 Standard, (**Pass/Fail**)
2. Check operator system sku, (E-sku/ P-sku)
3. Check operator system’s architecture, (32bit/ 64bit)
4. Check whether user is under “Administrator account”, (**Pass/Fail**)
5. Check how many times of “sysprep” you can use, (0~4)
6. Which user account you want to delete in this operator system

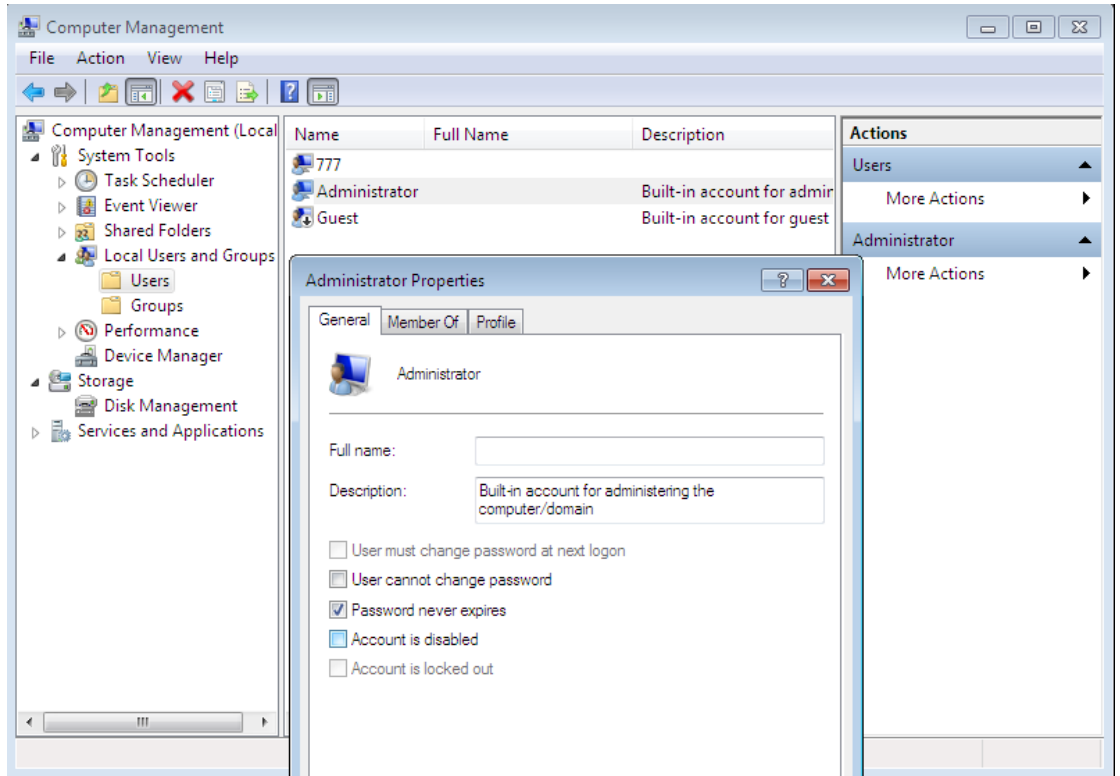
Supplement:

1. If there is any “Fail” on page 1, you cannot enter next page
2. Windows Embedded 8 Standard only has one kind of sku version
3. If you are not in “Administrator account”, please do following step to enter “Administrator account”(WES7 & WE8S has little different)

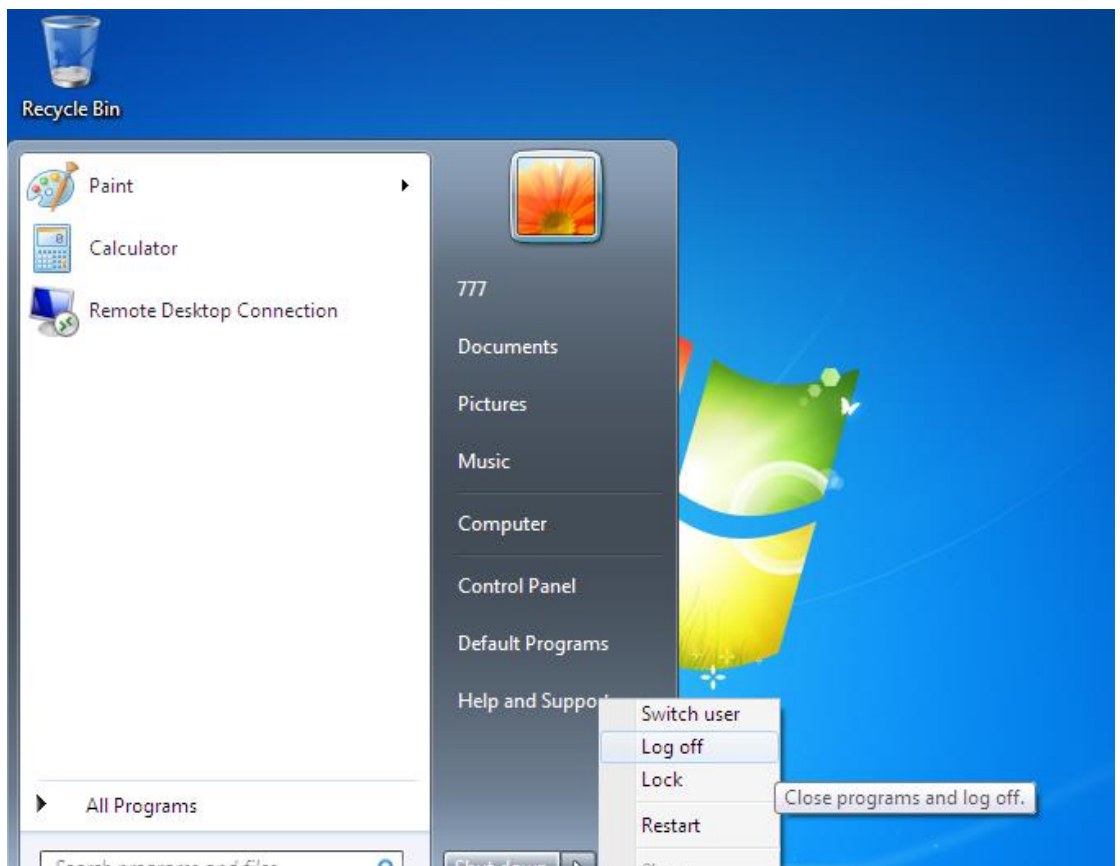
Windows Embedded Standard 7 (WES7):

- i. Computer -> Manage -> local user and group -> users -> Administrator -> disable “Account is disable”





ii. Log off this user account -> chose "Administrator"





Advantech.Co.,Ltd Language Adding Tool (V 1.2.0.130912)

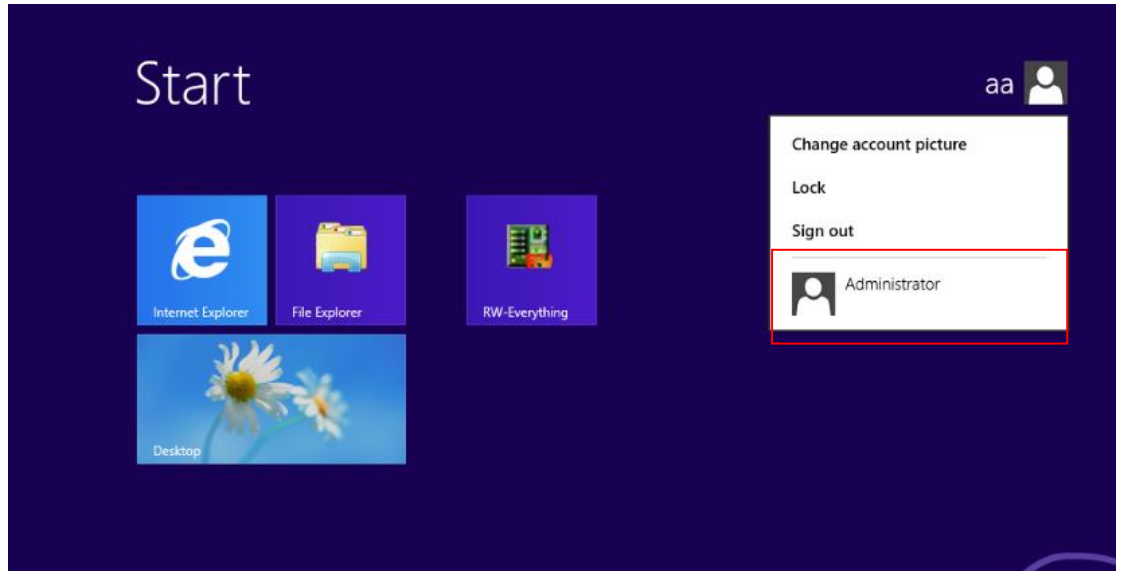
ADVANTECH Language Adding Tool

Checking	Description	State
Prepare	Windows Embedded Standard 7 SP1	Pass
Verify	Windows Embedded 8 Standard	
Install	E-sku / P-sku	
Sysprep	OS Architecture	32bit
	Administrator account	Pass
	Rearm Count	4
	Delete other User Account	<input checked="" type="radio"/> All User <input type="radio"/> One by one <input type="radio"/> NO action

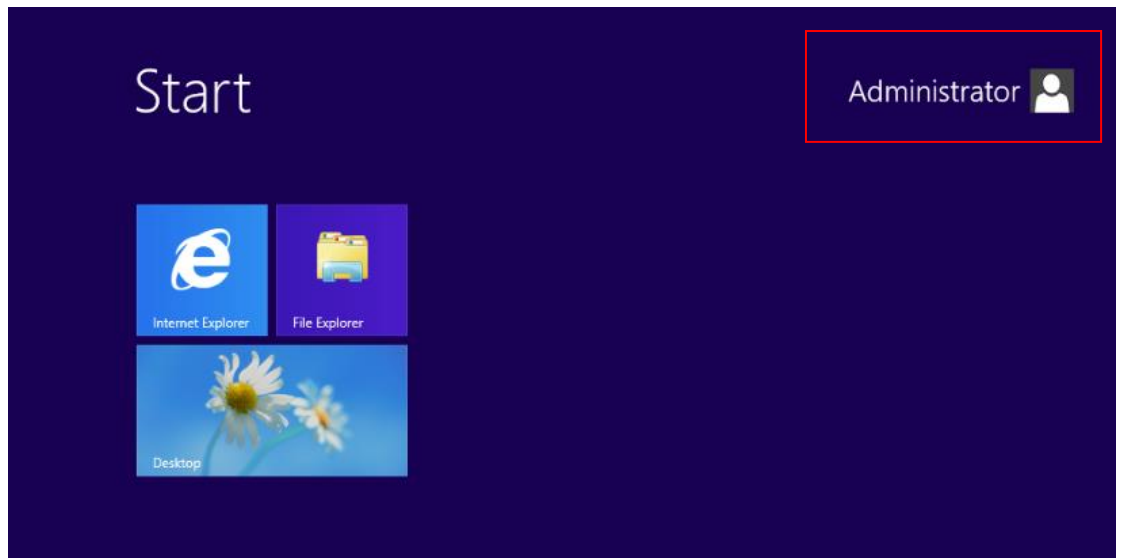
Next > Exit

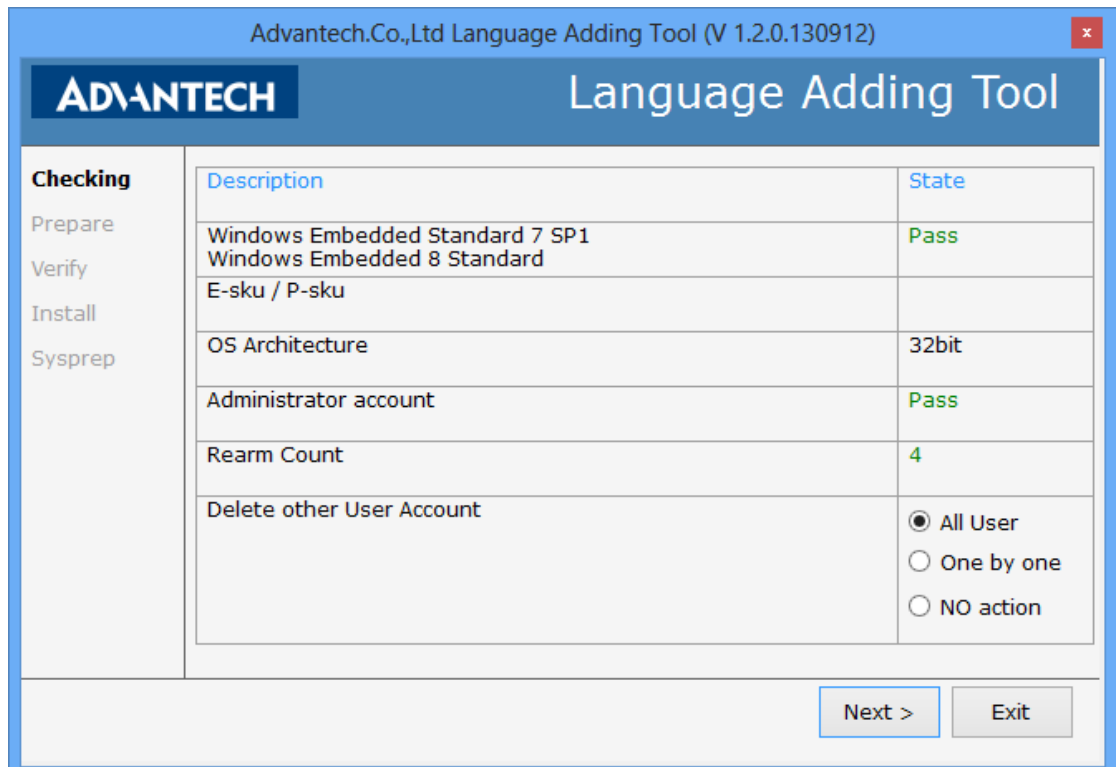
Windows Embedded 8 Standard (WE8S):

- i. Computer -> Manage -> local user and group -> users -> Administrator -> disable "Account is disabled" (Same as WES7)
- ii. After you open "Administrator" account, please go to "Start" page, and click "Administrator" on the Start page's right top

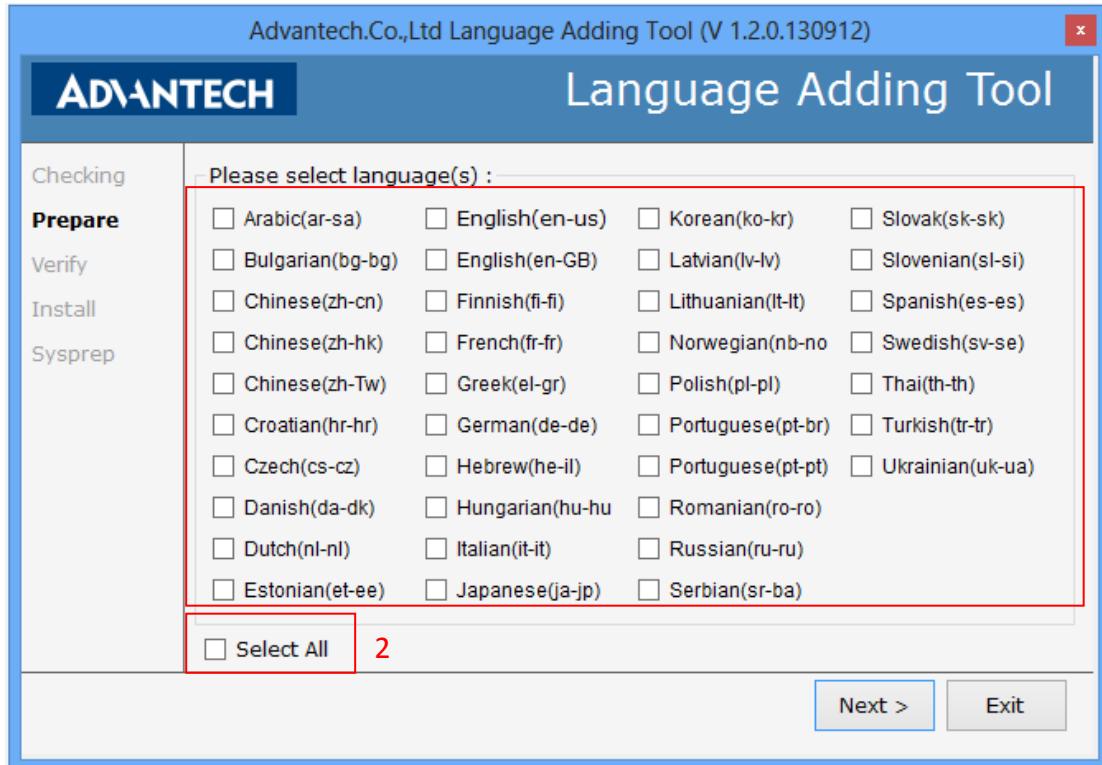


- iii. You are entering "Administrator" account now





4. If your "Rearm Count" is "0", then you cannot use this application anymore
5. **If you want to keep other user account, please chose "One by one"/"NO action", otherwise, your user account will be delete by Language Tool**



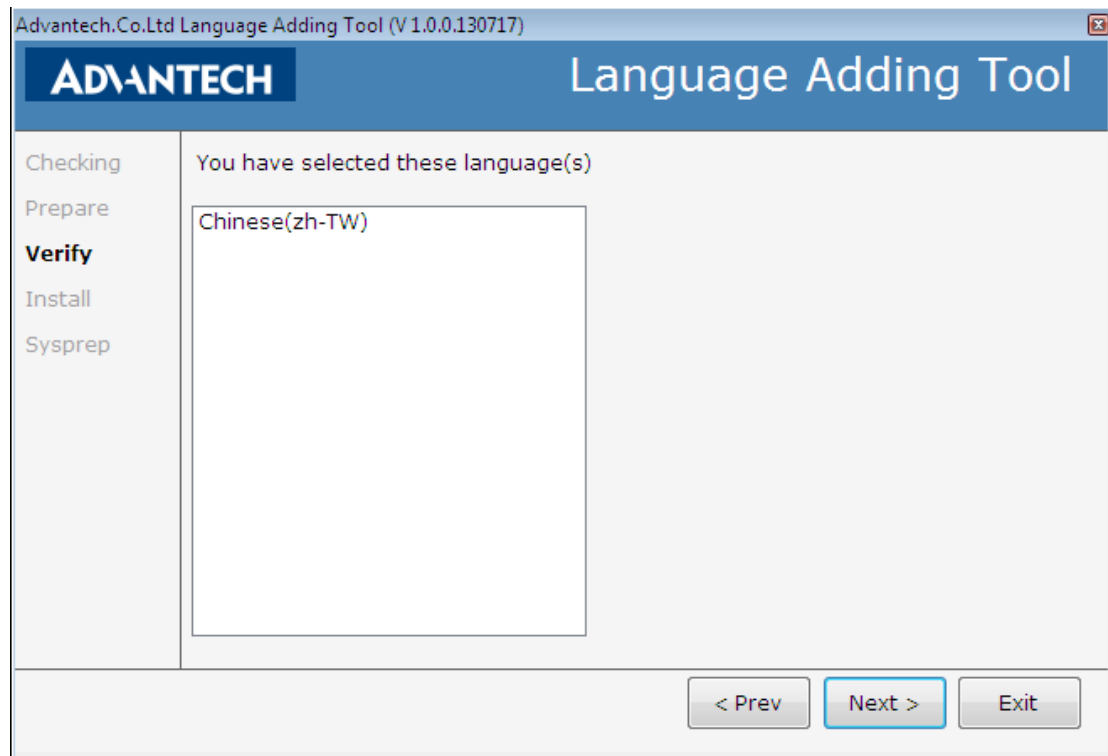
Function:

1. Please select the language that you want to install in OS
 - i. “English (en-GB)” can only support on WE8S
2. “Select all” will be enabled when you are under “Windows embedded 7 SP1 P-sku” and “Windows embedded 8 standard” environment

Supplement:

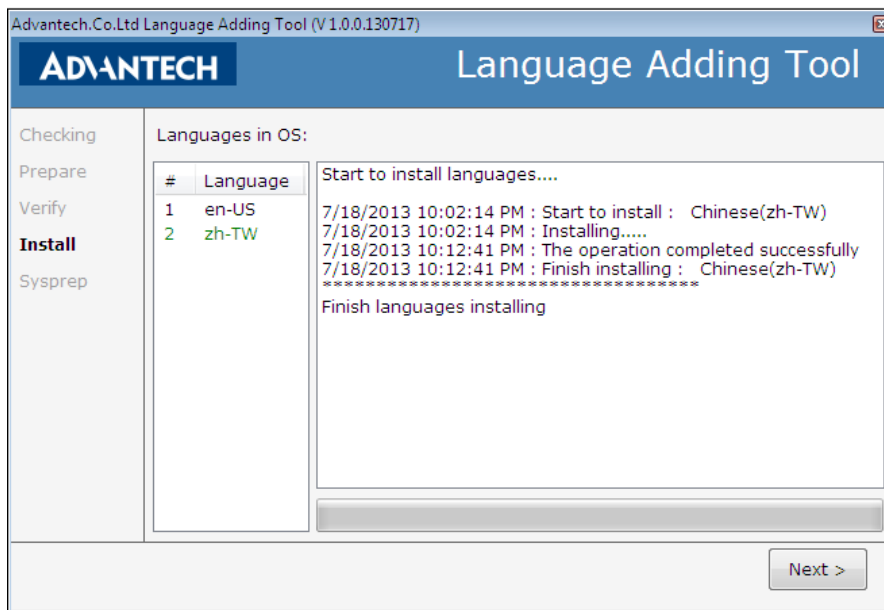
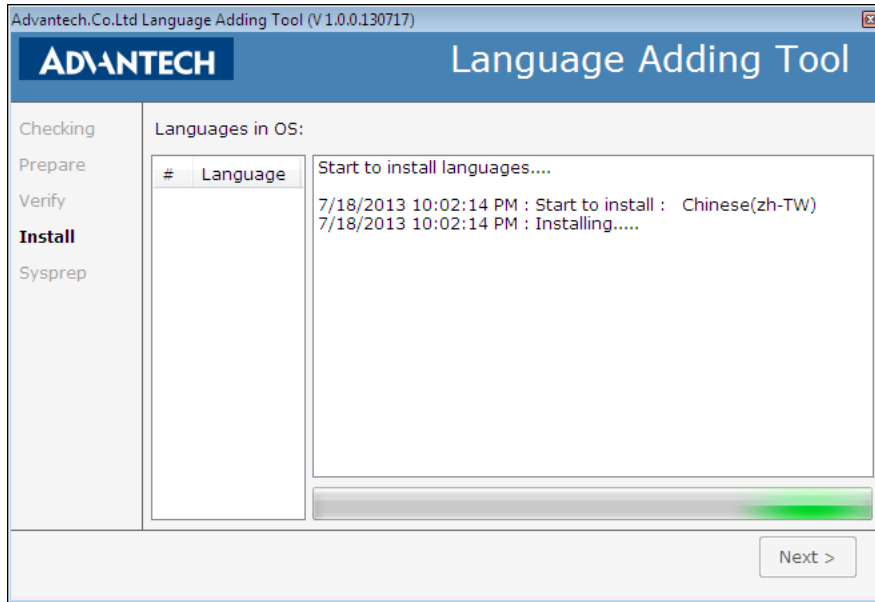
1. WES7 E-sku can only install “1” language, WES7 P-sku and WE8S can install multi-languages at one time

Page 3



Page 3 will let you check whether the languages which user chose on page 2 can be installed into OS

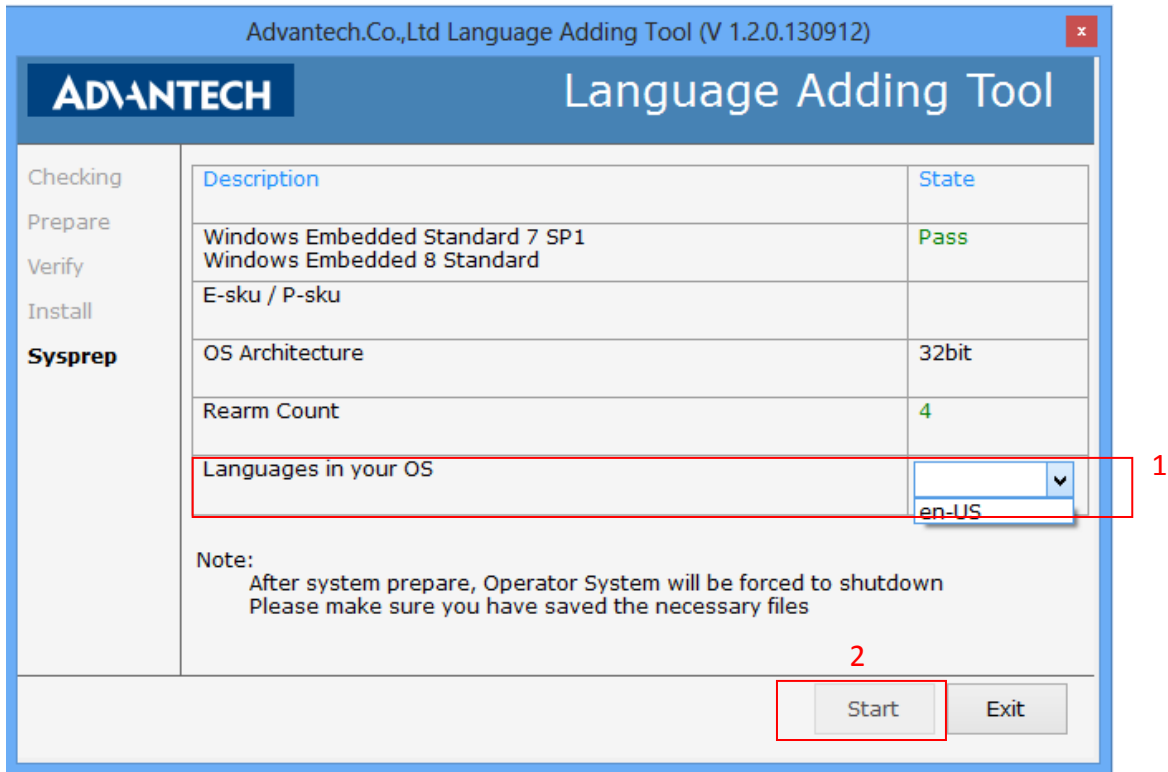
Page 4



Page 4 will start to install the languages, and it will show the whole languages in your OS after finishing. Green represents new adding and black means already inside the OS originally

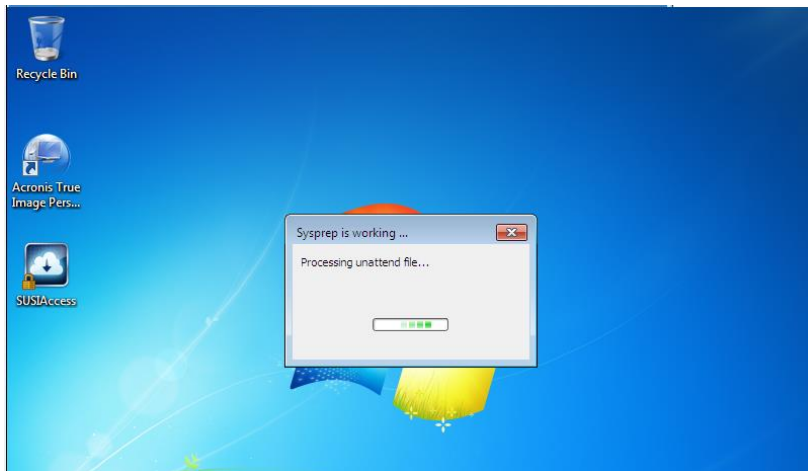
Supplement:

If there is any error when you are installing the language, it will show some error number on screen




Function:

1. You can check languages in your OS
 2. Starting system prepare,
 - After finishing system prepare, the system will start “Generalize” and will go to “OOBE” after you restarting the OS, then, **you could see the language selection page at this time**
- (Note: WES7 P-sku cannot see the language selection page)**



Setup is starting services

 Windows Embedded
Standard 7

My language is English
我的語言是 中文(繁體)(台灣)