

McAfee® Application & Change Control installation introduction

Roger Lin
2016/5/31

Release Date

- 2014/09/05

Installation Requirements

- *Operating Systems (OS) requirements*
- *Installation Step*

Operating systems (OS) requirements

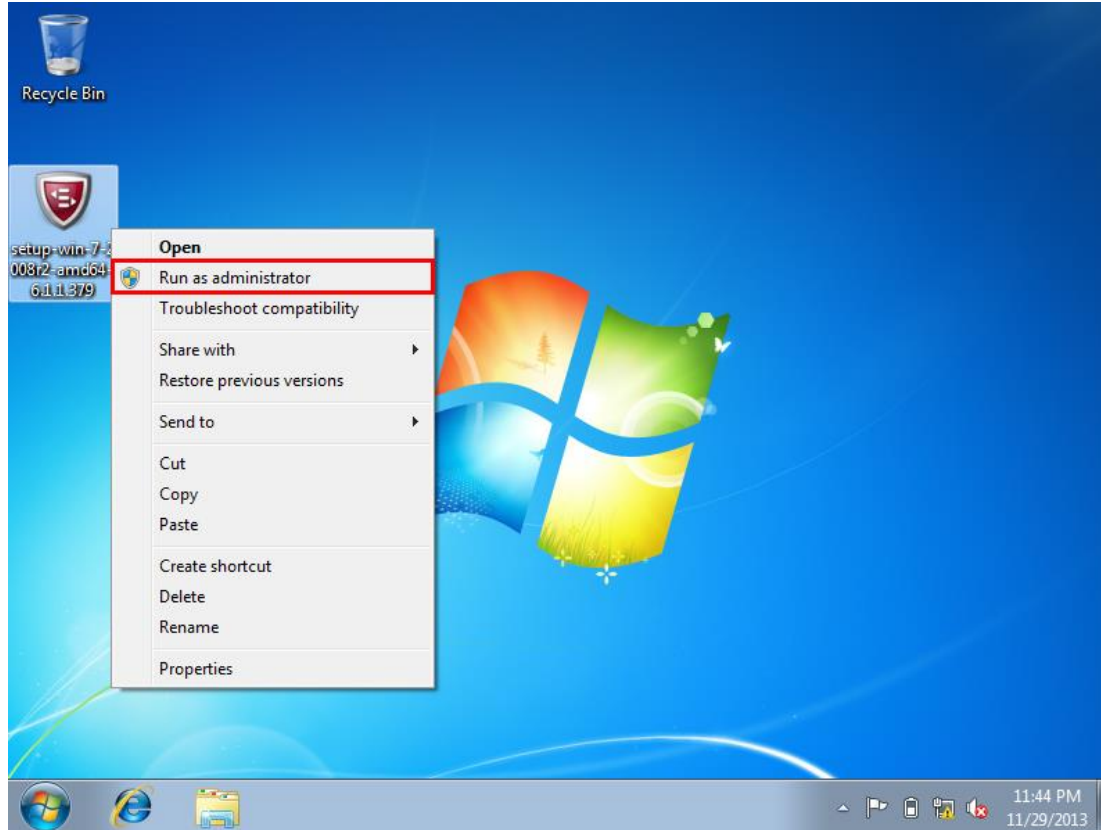
Operating systems (OS)

- Microsoft Windows NT*
- Microsoft Windows 2000/2003/2008
- Microsoft Windows XP/Vista
- Microsoft Windows XPE/2009
- Microsoft Windows XP/Vista (64-bit)
- Microsoft Windows 2003/2008 (64-bit)
- Microsoft Windows CE 6.0*
- Microsoft Windows 7
- Microsoft 2008 R2
- Linux RHEL 3/4/5
- CentOS 4/5
- SuSE EL 9/10
- Oracle EL 5
- Solaris 8/9/10

* These platforms are not supported by the McAfee ePolicy Orchestrator, management platform, or they work in standalone mode.

Installation Step

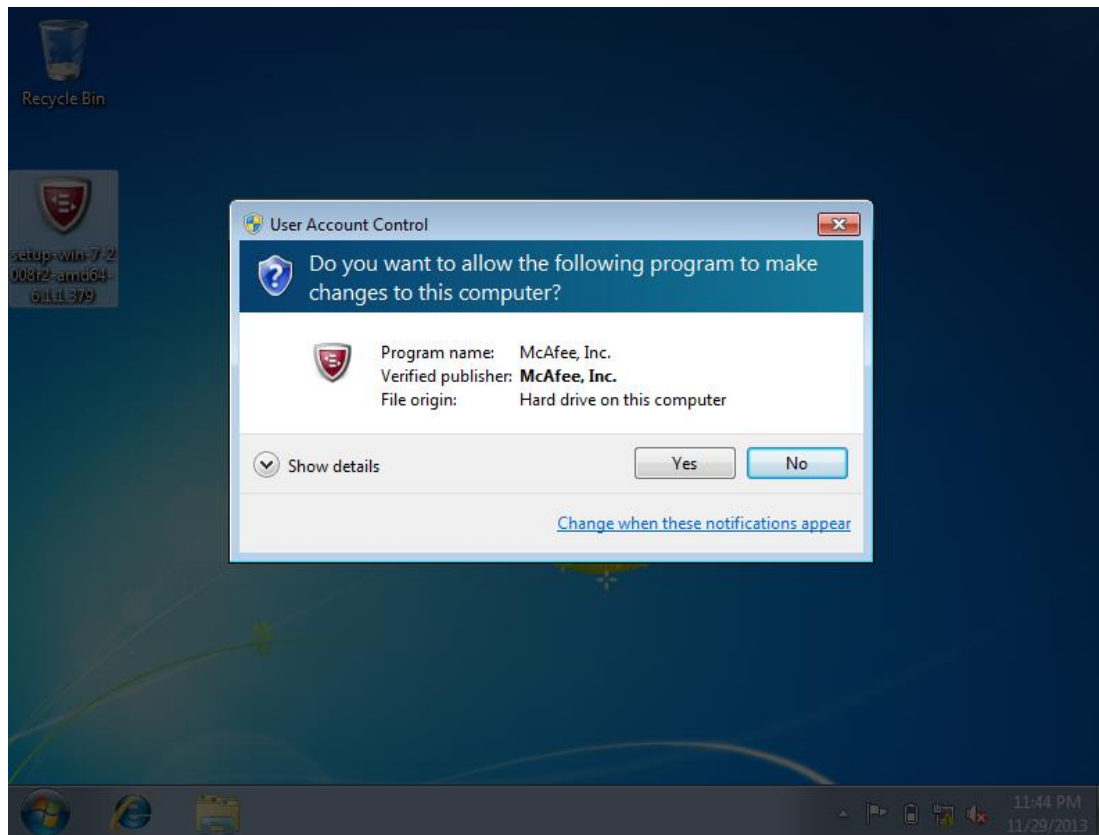
- Right click and select "**Run as administrator**" on setup-win-7-2008r2-amd64-6.1.3.357.exe (Up to the system architecture)



PS: setup-win-7-2008r2-amd64-**X.X.X.XXX**.exe. X.X.X.XXX is version and it might be changed due to new feature.

Installation Step

- Click "Yes" while the UAC warning



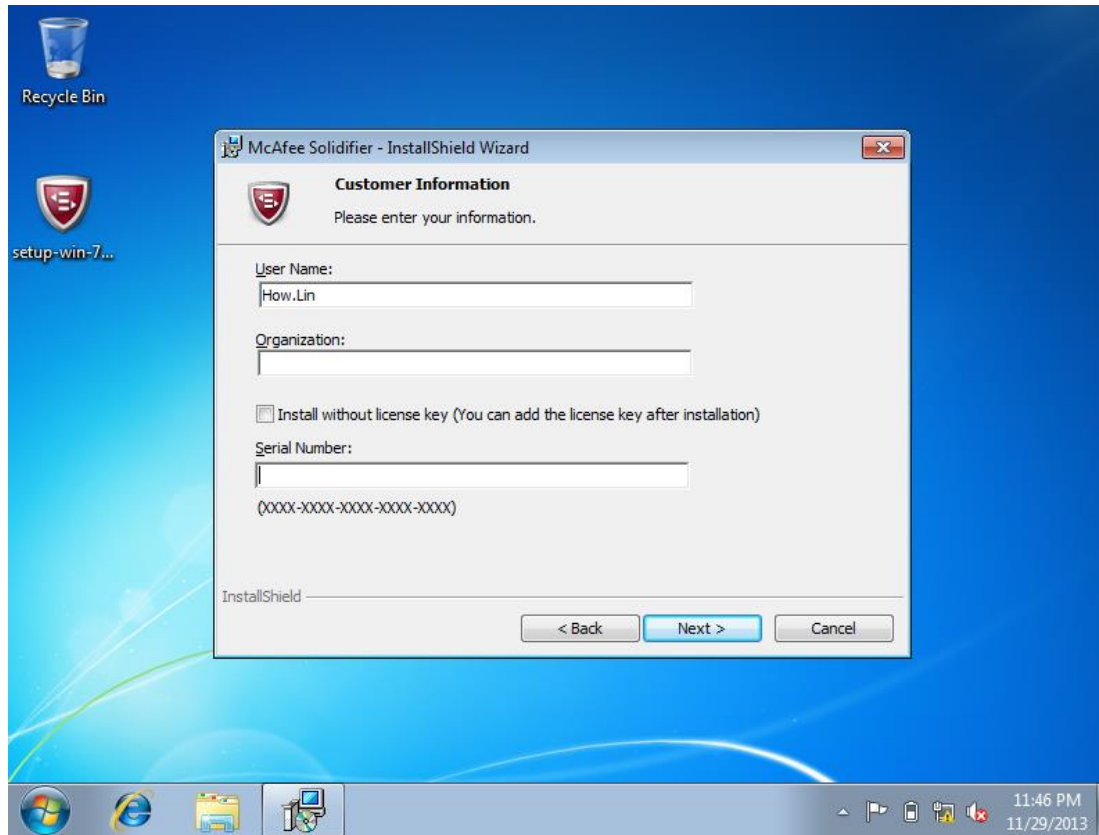
Installation Step

- Click "**Next**" and accept the license agreement



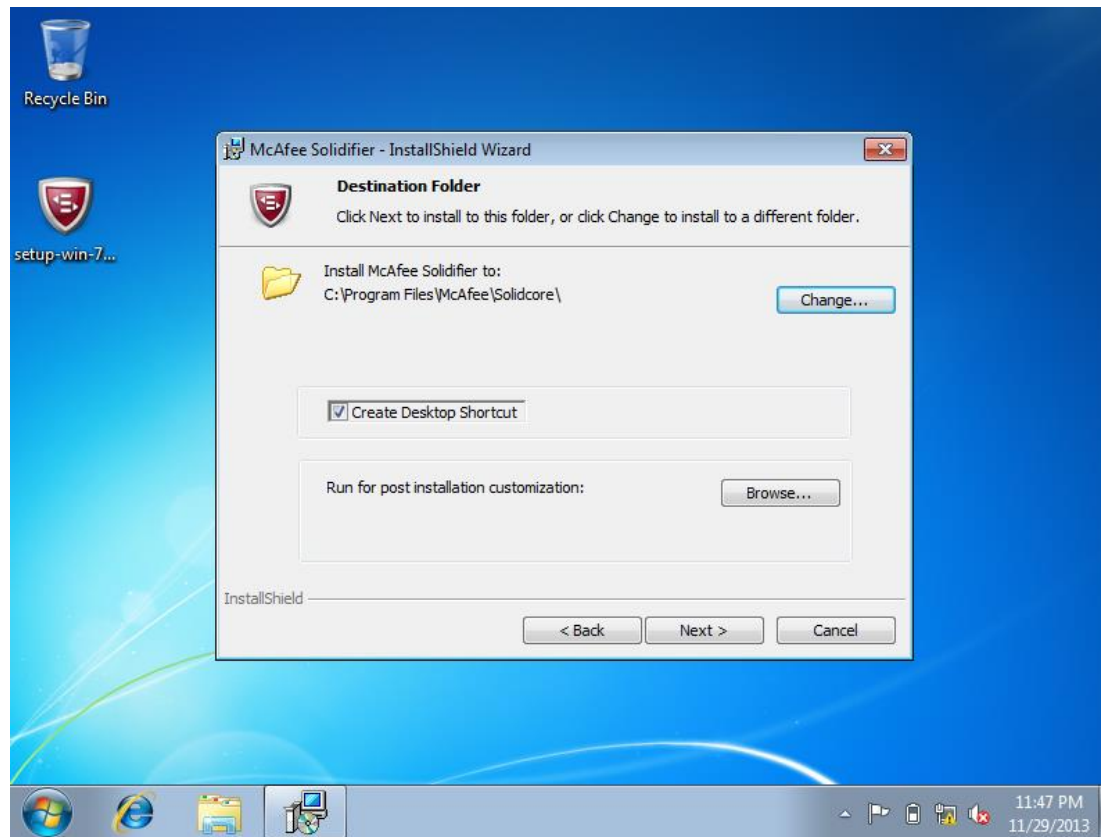
Installation Step

- To enter the "User Name" and "Serial Number" here



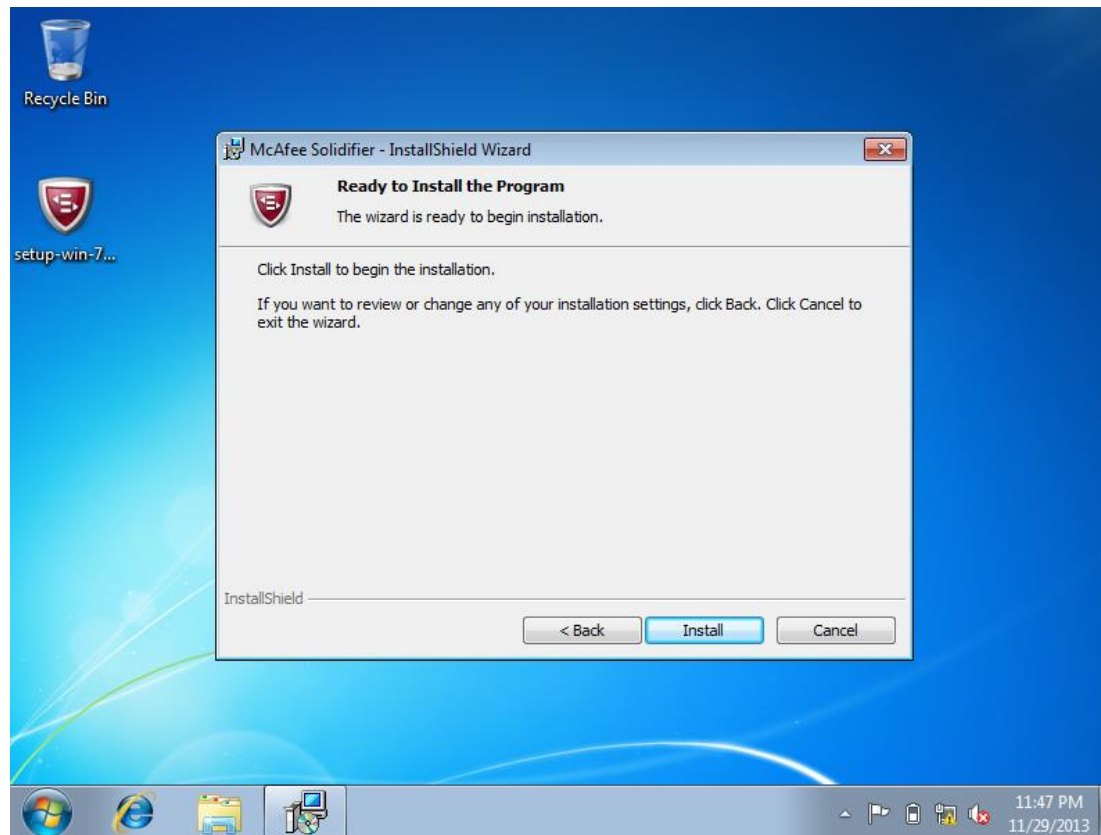
Installation Step

- Keep the default settings and click "Next"



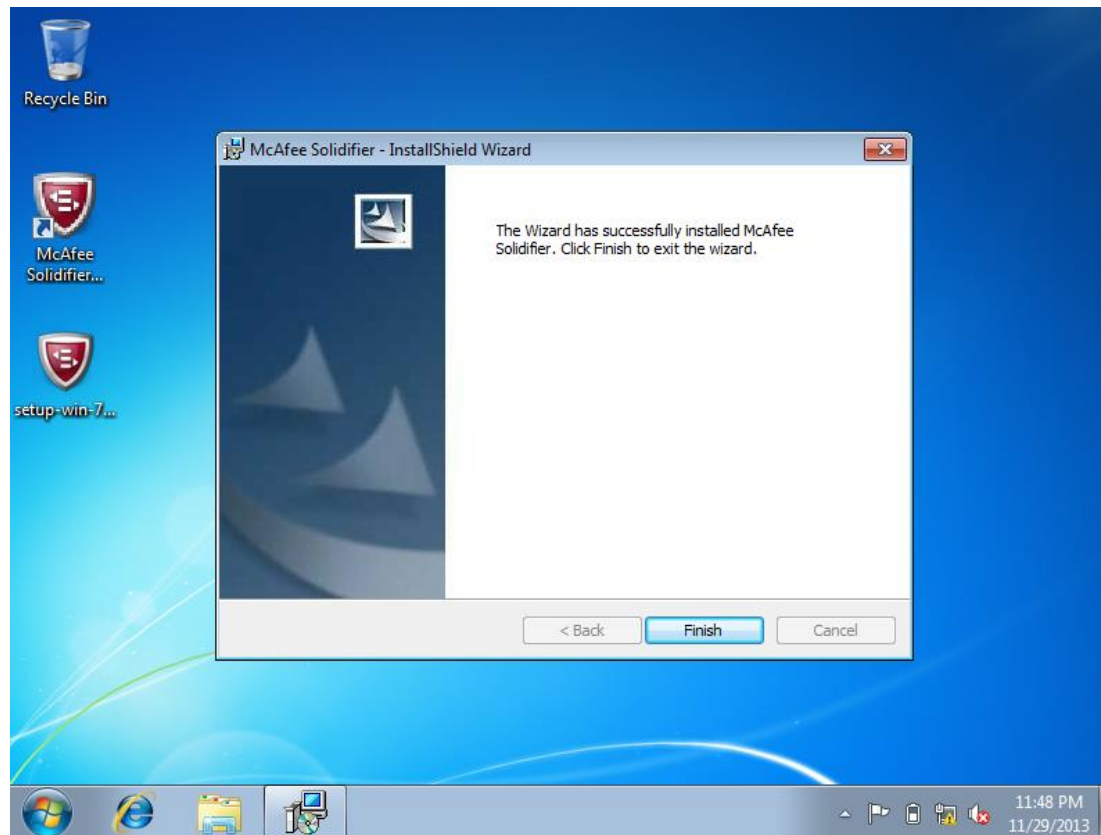
Installation Step

- Click "**Install**" when you are ready to install



Installation Step

- Click "**Finish**" to exit the setup wizard



Installation Step

- Finally will see the shortcut of "McAfee Solidifier Command Line" on Desktop

