



# SKU Compliance Package in Windows Embedded Standard 7 SP1

Microsoft Corporation  
March 2011

## **Windows® Embedded Standard 7 SP1**

Windows® Embedded Standard 7 Service Pack 1 (SP1) now includes a new SKU Compliance Package. The SKU Compliance Package helps ensure that packages included in a Standard 7 image are aligned with the features in each Standard 7 SKU. When incorporated into an Standard 7 operating system image build, the SKU Compliance Package replaces the License Assessment Tool. (LAT)

## Contents

Introduction .....	3
License Assessment Tool Limitations .....	3
The SKU Compliance Package: A Better SKU Compliance Method .....	3
Standard 7 SKUs Available .....	4
How the SKU Compliance Package Works .....	6
Conclusion .....	8
Additional Resources .....	9



## Introduction

Windows® Embedded Standard 7 Service Pack 1 includes a new SKU Compliance Package applicable to each Standard 7 SKU. The SKU Compliance Package aligns the packages included in an image build to the features included in the SKU by disabling features not permitted in the selected SKU.

This white paper covers the SKU Compliance Package included with Standard 7 SP1. Topics include:

- License Assessment Tool limitations
- The SKU Compliance Package: A Better SKU Compliance Method
- Standard 7 SKUs Available
- How the SKU Compliance Package works

## License Assessment Tool Limitations

In 2010, the Windows Embedded team released the LAT for Standard 7. The LAT analyzes an answer file or Deployment Image Servicing and Management (DISM) output file against a target SKU to determine whether or not it fulfills the terms of a given SKU license.

Feedback from customers and partners regarding the LAT uncovered the following limitations:

- The LAT may present confusing results that are not as helpful as intended.
- The LAT may present package dependency results that do not match the original requirement or request; For example, a developer may want to build a Standard 7 C SKU image, but may instead assemble a mix of packages that by license agreement are not permitted in the C SKU build.
- Standard 7 developers can spend excessive amounts of time working with a package verification process that can be streamlined and improved.

## The SKU Compliance Package: A Better SKU Compliance Method

Based on this feedback, the Windows Embedded team has created the SKU Compliance Package for Windows Embedded Standard 7 SP1 and will retire the LAT, which will not function from SP1 forward. The SKU Compliance Package streamlines the SKU feature validation process and helps ensure that Standard 7 operating system images are built in compliance with the SKU selected. The reporting provided by the LAT has been replaced with an ability to disable packaged operating system features not aligned in a given Standard 7 SKU.



**Important:** The SKU Compliance Package is an aid only; it does not augment or replace the licensing parameters associated with each Standard 7 SKU. In addition to using the SKU Compliance Package as a package validation aid, we recommend working with your account manager as appropriate to ensure Standard 7 licensing parameters are aligned with your needs.

## Standard 7 SKUs Available

There are three Windows Embedded Standard 7 SKUs:

- **Windows Embedded Standard 7 E**, which provides operating system components that include secure networking, enterprise integration, advanced web capabilities, and smart power management options. In addition, Standard 7 E also provides access to the latest Windows® 7 technologies to better deliver embedded devices that are more secure, reliable, and manageable.
- **Windows Embedded Standard 7 P**, which provides a rich set of components and features to better deliver advanced consumer- and enterprise-class devices. Standard 7 P can satisfy scenarios requiring multitouch gestures, enhanced lockdown, rich media capabilities, and efficient network management.
- **Windows Embedded Standard 7 C**, which provides a comprehensive set of components optimized for rich media playback scenarios while also providing extensible customization options.

The following table maps packages to Standard 7 SKUs. Use the table as a guide in selecting the SKU you want to implement on your embedded devices.

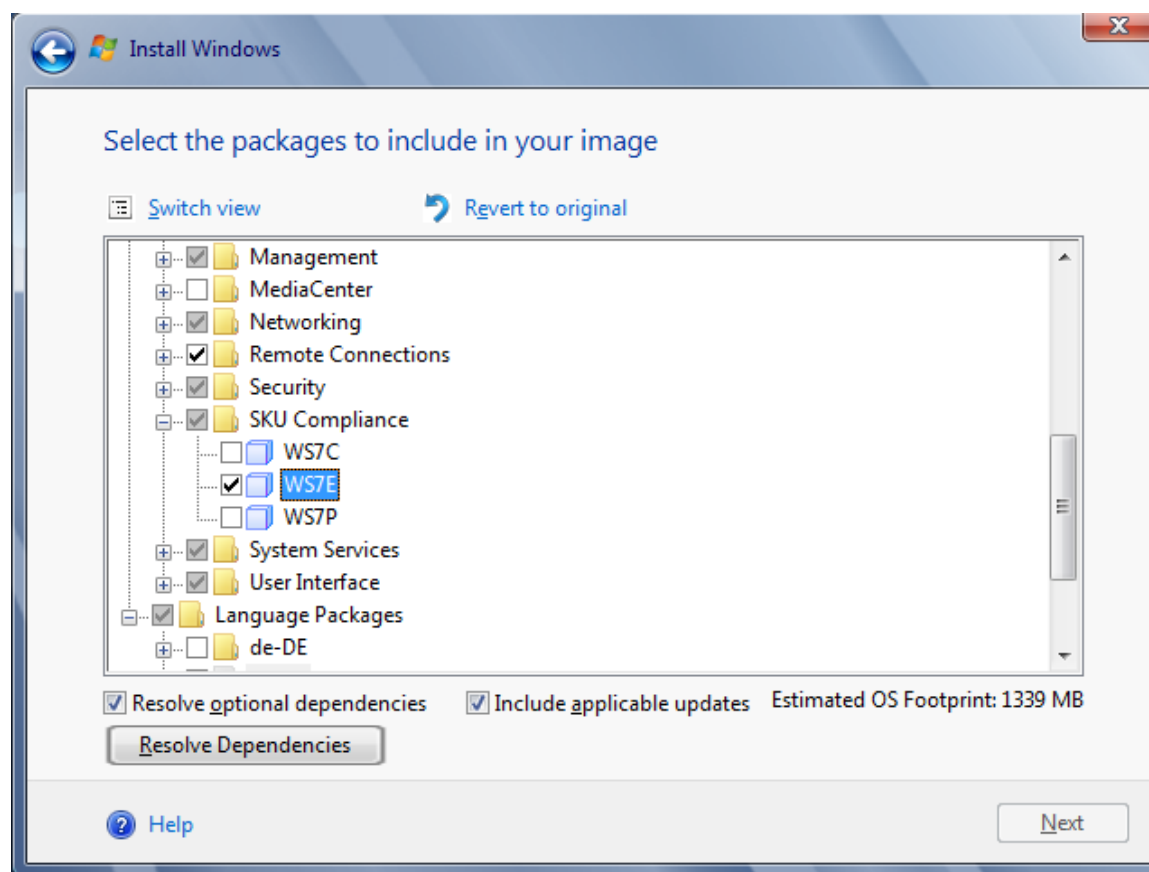
**Table 1:** Standard 7 Features, SKU Types, Package Names, and One-to-One Dependencies

Feature	Standard 7 E	Standard 7 P	Standard 7 C	Package name	One-to-one dependencies
Microsoft® AppLocker™	Not included	Included	Not included	Application Security	N/A
Microsoft BitLocker® Drive Encryption	Not included	Included	Not included	BitLocker Security Startup	Yes
Microsoft Bitlocker To Go™	Not included	Included	Not included	BitLocker Security Startup	Yes
Bitlocker Secure Startup	Not included	Included	Not included	BitLocker Security Startup	Yes
Microsoft BranchCache™	Not included	Included	Not included	Remote Client	Yes
Create and play DVDs	Not included	Included	Included	DVD Maker	N/A
Device Stage™	Not included	Included	Not included	Device User Experience	N/A

DirectAccess	Not included	Included	Not included	Windows Embedded Edition	N/A
Enterprise Search scopes	Not included	Included	Not included	Windows Search	N/A
HomeGroup	Not included	Included	Included	Network and Sharing Center	N/A
Parental Control	Not included	Included	Not included	Parental Control	Yes
Photo Viewer	Not included	Included	Not included	Photo Viewer	Yes
Snipping Tool, Sticky Notes, Windows Journal	Not included	Included	Not included	Tablet PC Support	N/A
Tablet PC support	Not included	Included	Not included	Tablet PC Support	N/A
Windows Defender (malware protection)	Not included	Included	Not included	AntiMalware	Yes
Windows Media® Center	Not included	Included	Included	MediaCenter	Yes
Windows Touch (multitouch support)	Not included	Included	Not included	Tablet PC Support	N/A
Join a domain and Group Policy controls	Included	Included	Not included	Group Policy Management	N/A
Encrypted File System (EFS)	Included	Included	Not included	Encrypted File System (EFS)	N/A
Home media streaming, including Play To	Not included	Included	Included	N/A	N/A
Multilingual User Interface (MUI) Packs	Not included	Included	Not included	N/A	N/A
Remote Media Streaming	Not included	Included	Included	N/A	N/A

## How the SKU Compliance Package Works

The SKU Compliance Package displays as a folder in the installation user interface that appears when a developer uses either the Image Build Wizard (IBW) or the Image Configuration Editor (ICE) to install or update a Standard 7 operating system image. The **SKU Compliance** folder contains three compliance packages, one for each SKU available. The following figure shows the Standard 7 E SKU package selected in the **SKU Compliance** folder while running the IBW.

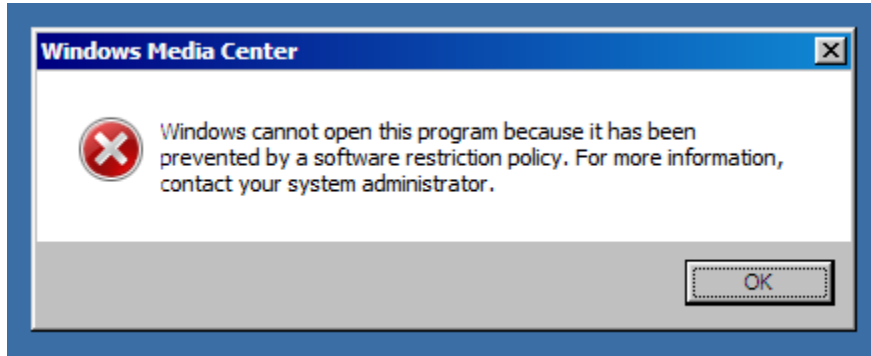


**Figure 1.** The SKU Compliance folder and associated SKU compliance packages.

On selecting a SKU package it is added to the build's answer file. Any package functionality incorporated in a build not aligned with the selected SKU compliance package is disabled when the process is complete.

**Note:** Package functionality disabled for the selected SKU is not removed from the created image. Operating system features disabled by the SKU Compliance package incorporated into a build will be present in the finished build, but the disabled results will vary in accordance to the feature type. Features not dialog driven simply will not run. Dialog driven features will open with a message that declares the feature is not permitted. To avoid potential confusion by users and administrators, testing the build prior to deployment is recommended.

The following figure shows an example of a message presented to inform users that a dialog-driven feature is not available in Windows Embedded Standard 7 SKU E. The Windows Media Center has been incorporated into the image build, but the SKU Compliance Package E has disabled it.



**Figure 2:** Message presented on activation of a disabled feature.

## Conclusion

The SKU Compliance Package replaces the reporting-only functionality previously provided by the LAT. It helps ensure packages included in a Windows Embedded Standard 7 SP1 image match the features included in the selected SKU. The SKU Compliance Package streamlines feature validation, but it does not augment or replace the licensing terms associated with Embedded Standard 7.

The SKU Compliance package disables features not mapped to a selected SKU. It does not remove them from the build. To avoid potential for confusion on the part of users, administrators and support services, and to reduce potential unnecessary updates, it is recommended that operating system features not required are not included in the build, and that images built are fully tested prior to deployment. To ensure a Standard 7 SKU is aligned with its licensing parameters, working with your Account Manager is recommended.

**For more information about Windows Embedded Standard 7 SP1, see:**

Windows Embedded website: [www.microsoft.com/windows/embedded/default.aspx](http://www.microsoft.com/windows/embedded/default.aspx)





## Additional Resources

Additional resources related to this topic include:

- Windows Embedded home page:  
<http://www.microsoft.com/windowseembedded/en-us/windows-embedded.aspx>
- Introducing SKU Compliance Packages:  
<http://blogs.msdn.com/b/embedded/archive/2011/01/26/introducing-sku-compliance-packages.aspx>
- Windows Embedded Standard 7: <http://www.microsoft.com/windowseembedded/en-us/products/westandard/default.aspx>
- Windows Embedded Standard OS Components: <http://www.microsoft.com/windowseembedded/en-us/develop/windows-embedded-standard-7-os-components.aspx>



**Copyright:**

This document is provided "as-is". Information and views expressed in this document, including URL and other Internet Web site references, may change without notice. You bear the risk of using it.

Some examples depicted herein are provided for illustration only and are fictitious. No real association or connection is intended or should be inferred.

This document does not provide you with any legal rights to any intellectual property in any Microsoft product. You may copy and use this document for your internal, reference purposes.

This document is confidential and proprietary to Microsoft. It is disclosed and can be used only pursuant to a non-disclosure agreement.

© 2011 Microsoft Corporation. All rights reserved.

