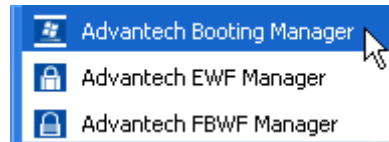
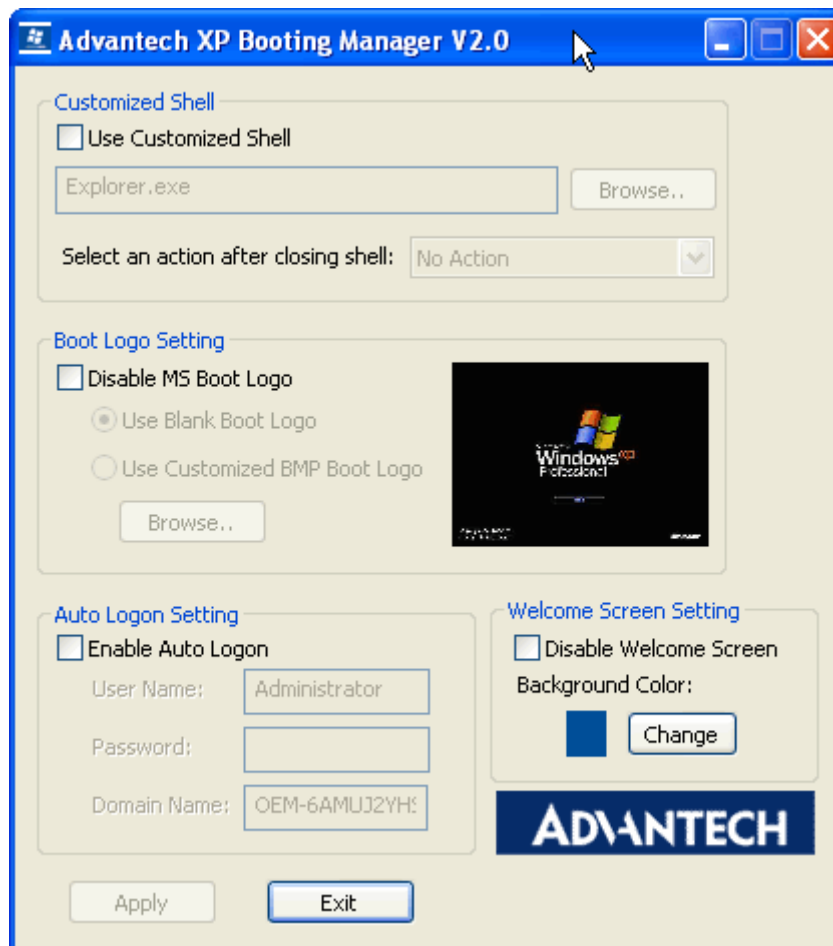


Booting Manager SOP

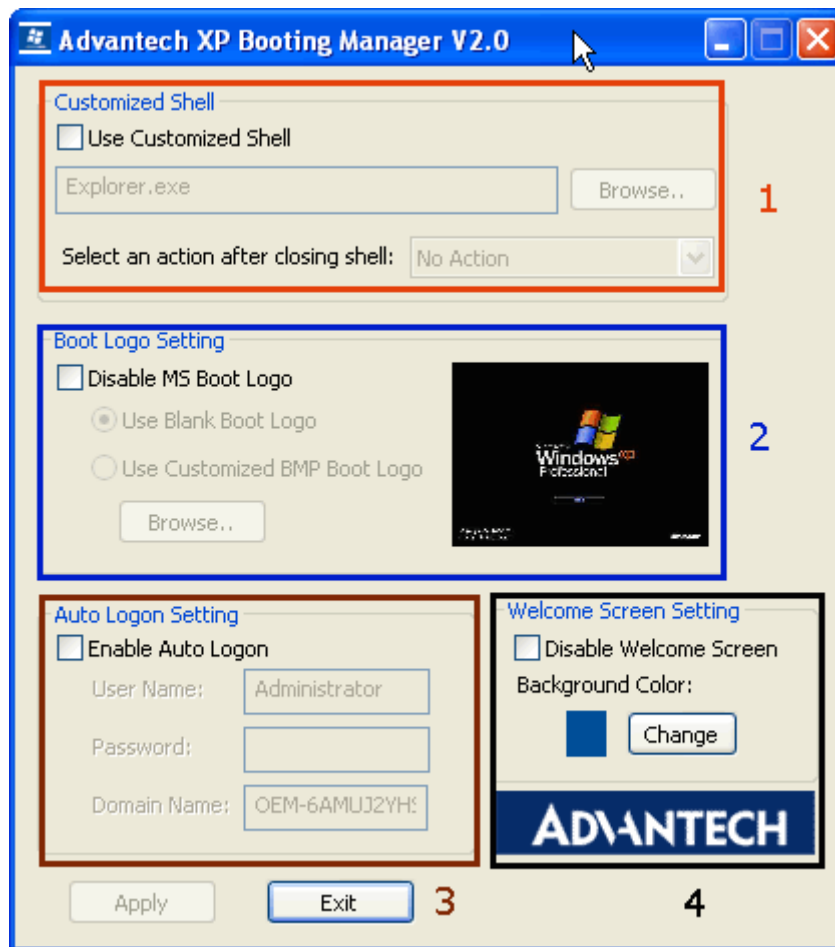
- I. **Open Start -> All Programs -> Advantech -> Advantech Booting Manger**



- II. You will get a user interface as following picture



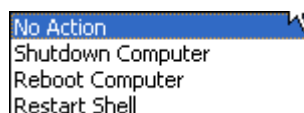
- III. There are four major function on the UI as following picture



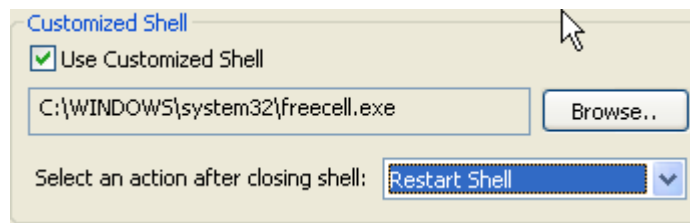
1. Customized Shell

i. Use Customized Shell: The function can run any exe file when you check Use Customized Shell
Its default setting is "Explorer.exe"

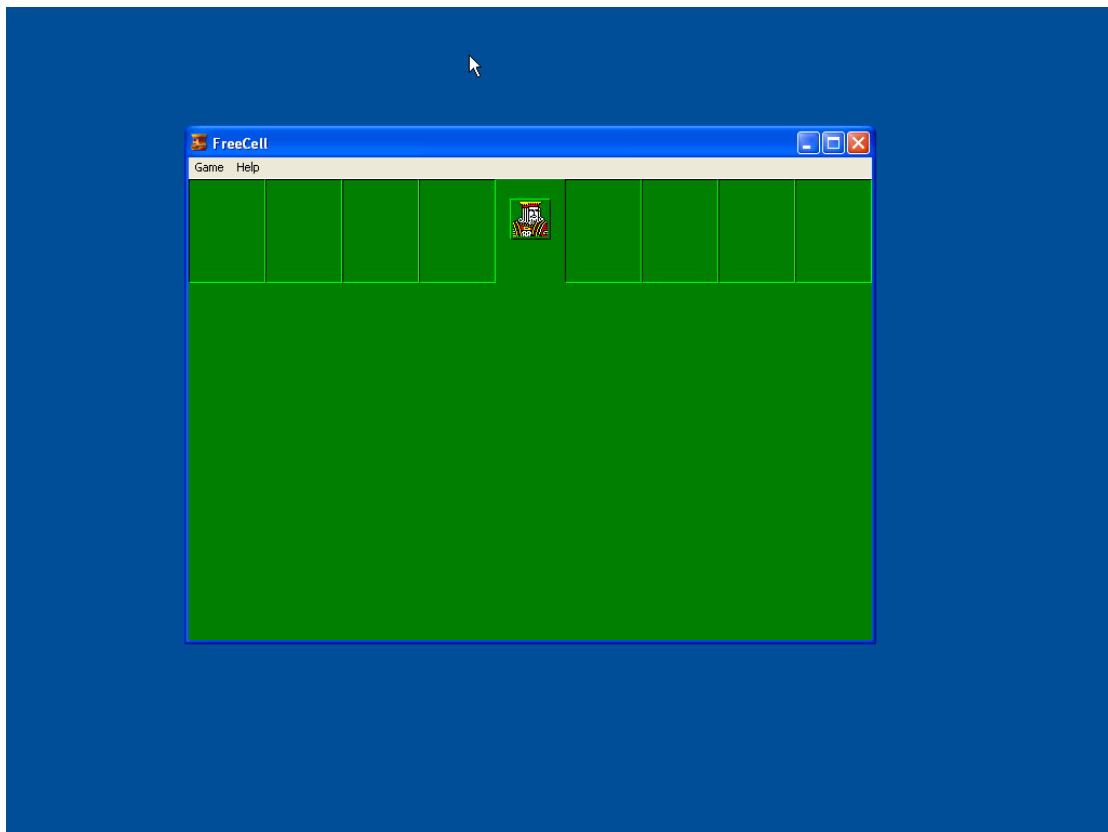
ii. Select an action after closing shell: if you close the above exe file it will run. It may be is **No Action, Shutdown Computer, Reboot Computer, and Restart Shell**



EX : If your setting is like following picture and reboot.



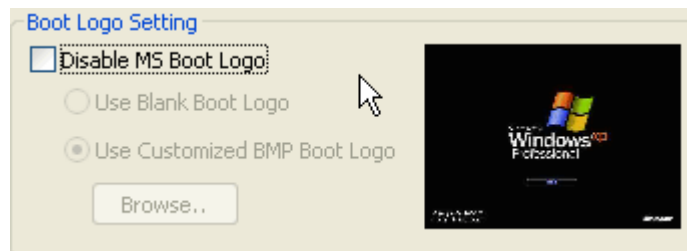
OS will run freecell.exe directly as following picture.
Even you close freecell.exe, OS will restart freecell.exe



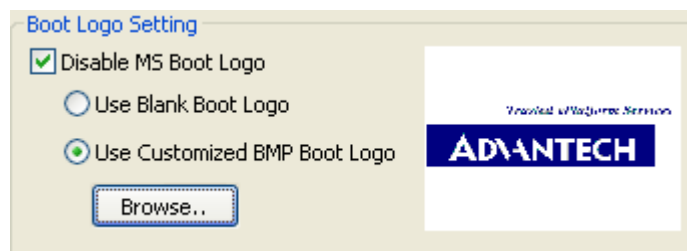
2. Boot Logo Setting

- i. Check "Disable MS Boot Logo" : the function will allow you to change boot logo
 - ii. Click Browse... : you can choose your company boot logo
- Note : The boot logo of your company must is **640X480**, and its **Bit Depth** must is **4 bits**.

Its default value is following picture



EX : If your setting is like following picture and reboot your OS

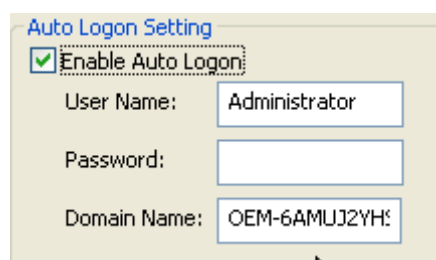


Your OS boot logo will change from **Microsoft standard logo** to **Advantech logo**

3. Auto Logon Setting

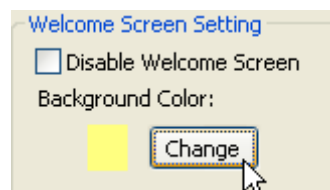
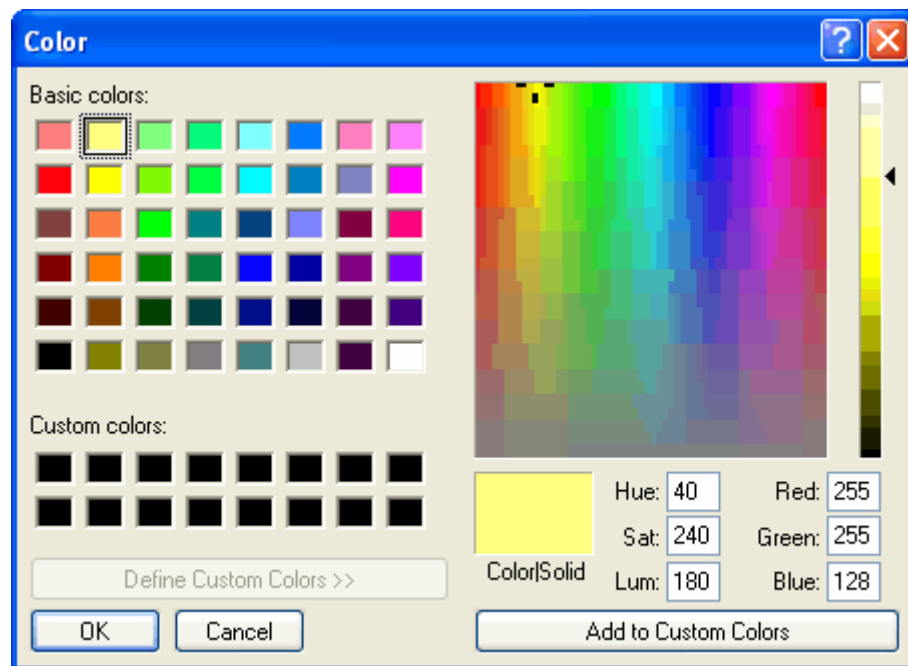
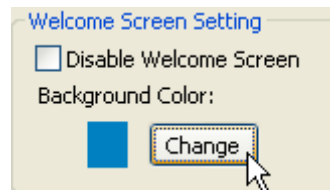
- i. Enable Auto Logon : if you check the function OS will logon your **User Name**, **Password**, and **Domain Name**

EX : If you want to logon OS by using "Administrator", you can set it as following picture



4. Welcome Screen Setting

- i. Click change and choose your **background color** of **shutdown OS** or **boot OS** as following picture



EX : If you set your background as above picture

