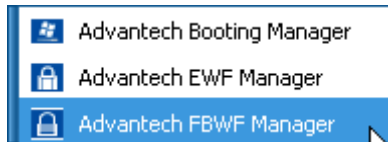
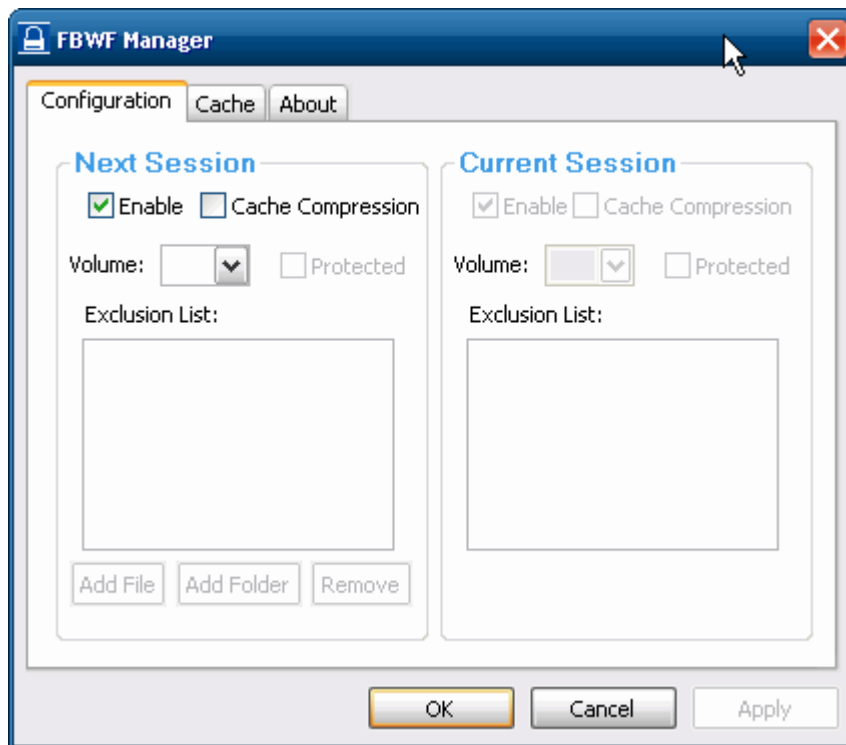


# FBWF(File Based Write Filter) Manager SOP

- I. Open **Start** -> **All Programs** -> **Advantech** -> **Advantech Booting Manger**

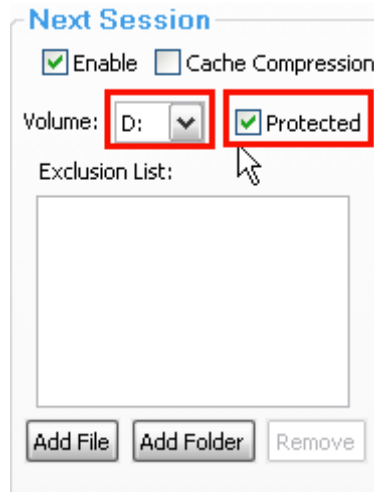


- II. You will get a user interface as following picture  
We can set **"Next Session"** panel to protect any volume

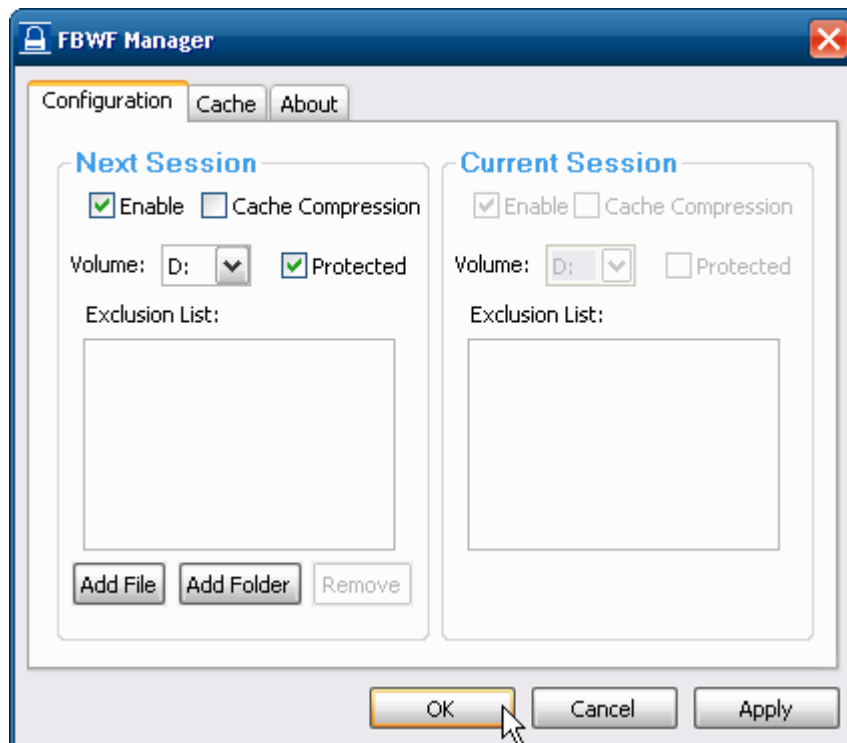


## III. If you want to protect "D" volume

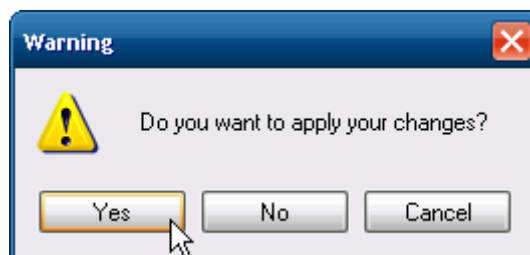
1. Set **"Next Session"** as following picture



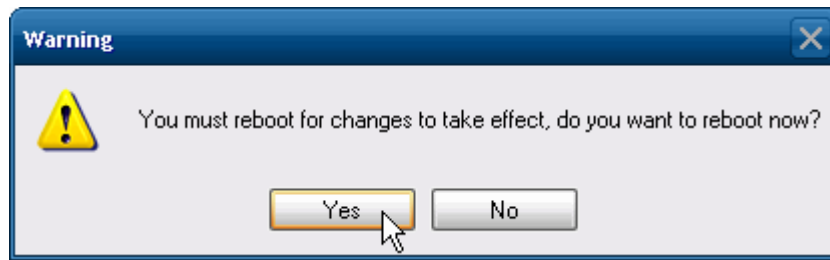
2. Click "OK" to protect "D" volume



3. Click "Yes" to apply your changes



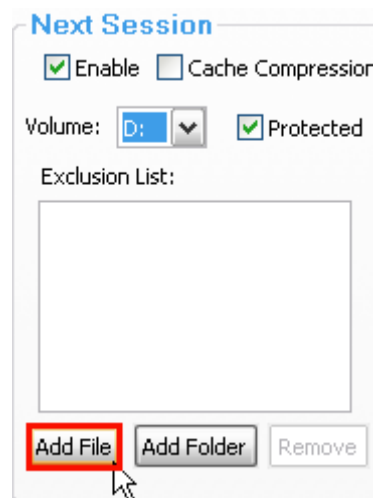
4. Click "Yes" to reboot OS



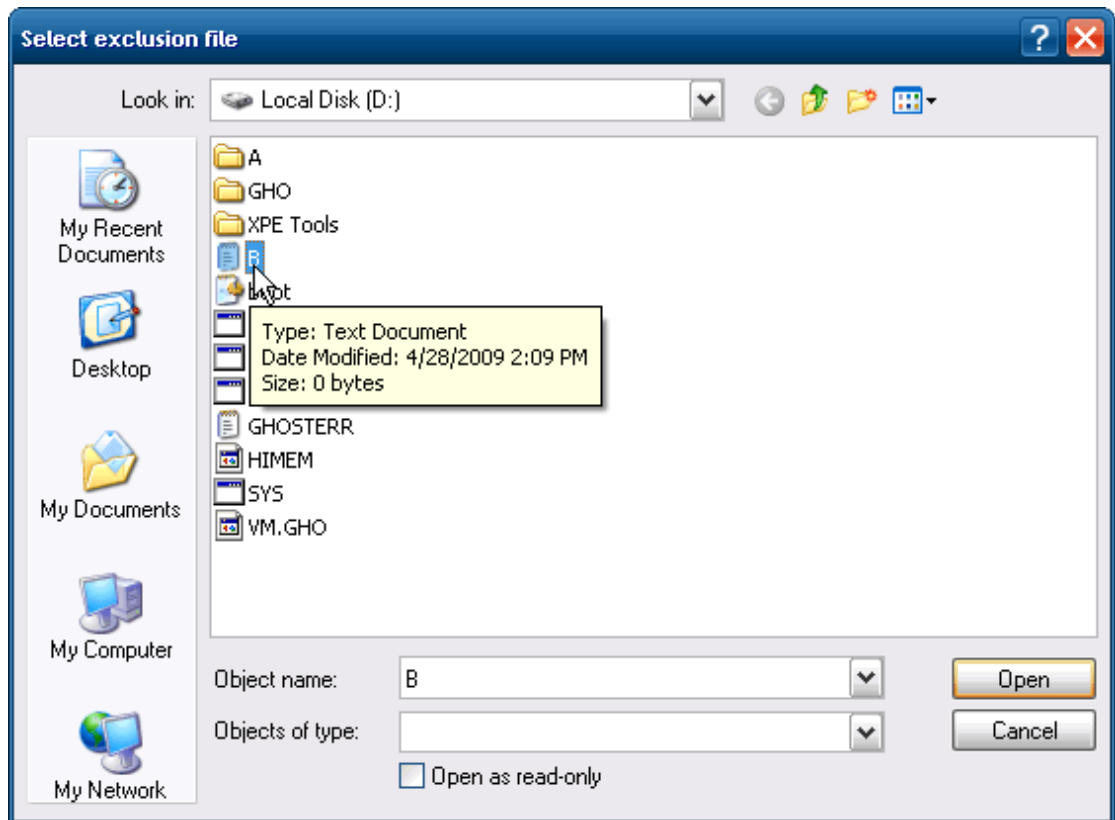
5. At this time, you can try to create folder or file under D volume and restart OS.  
You will discover you can't modify data under D volume.

#### IV. If you want to protect "D" volume beside "A" folder and "B" file

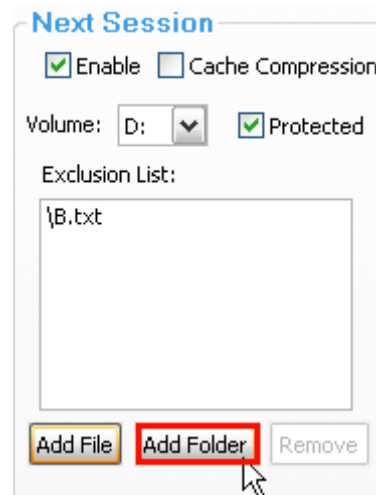
1. Create
2. Your setting is the same **If you want to protect "D" volume** first
3. Click "Add File"



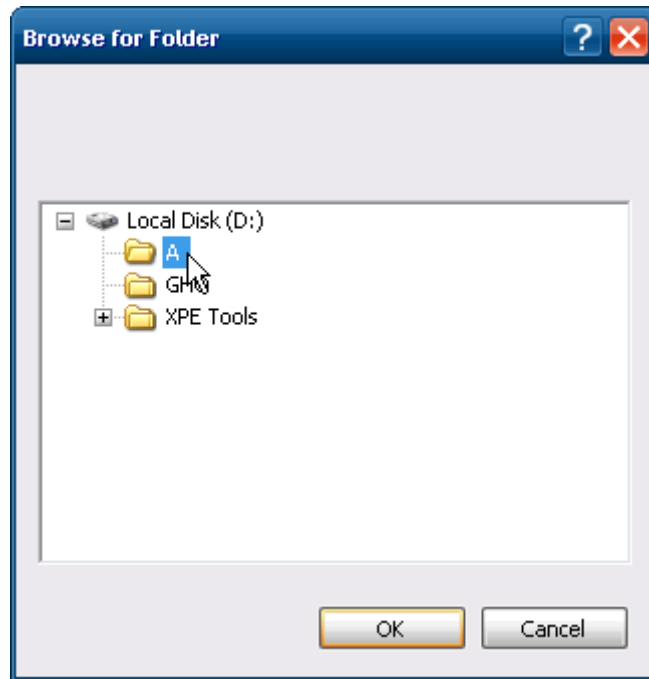
4. Select "B" file and click "Open"



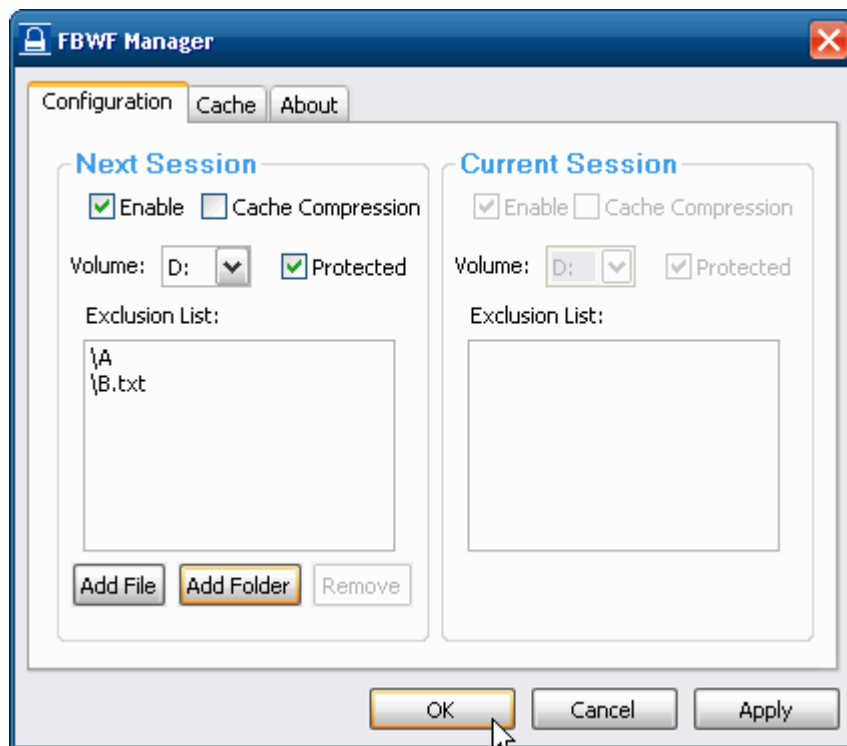
5. Click "Add Folder"



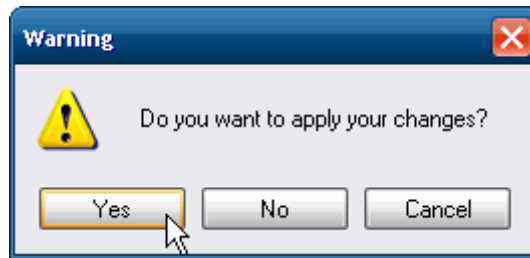
6. Select "A" folder and click "OK"



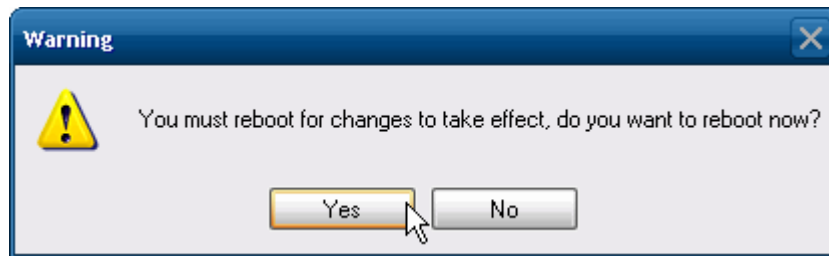
7. Click "OK" to change setting



8. Click "Yes" to apply your changes



9. Click "Yes" to reboot OS



10. At this time, you can try to create folder or file under D:\A\ folder and under D:\

11. After restarting OS, you can't write data under D volume beside of D:\A\ and B file.