

# Bootling Manager SOP

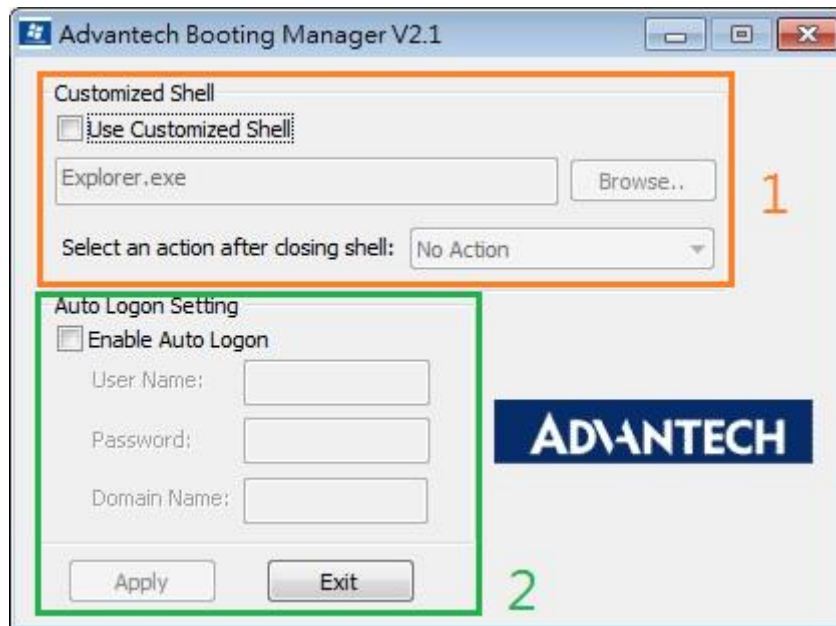
I. **Open Start -> All Programs -> Advantech -> Advantech Bootling Manger**



II. You will get a user interface as following picture



III. There are two major function on the UI as following picture

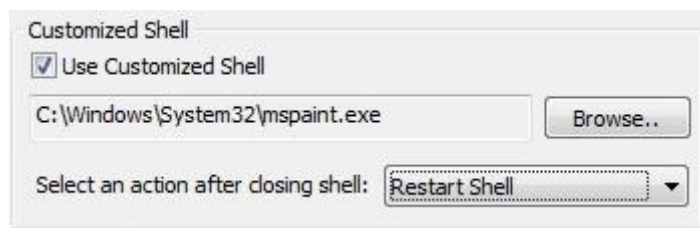


## 1. Customized Shell

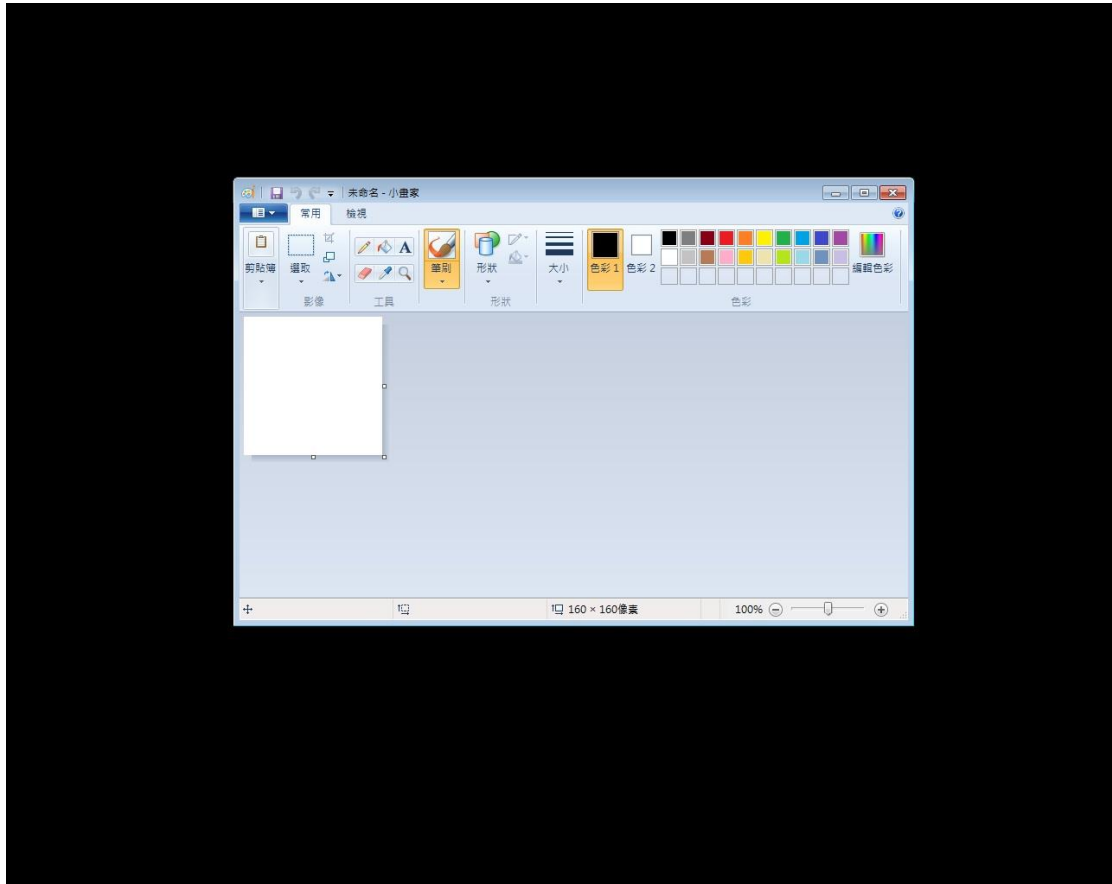
- i. Use Customized Shell: The function can run any exe file when you check Use Customized Shell  
Its default setting is "Explorer.exe"
- ii. Select an action after closing shell: if you close the above exe file it will run. It maybe is **No Action, Shutdown Computer, Reboot Computer, and Restart Shell**



EX : If your setting is like run mspaint.exe.



OS will run mspaint.exe directly as following picture.  
Even you close mspaint.exe, OS will restart mspaint.exe



## 2. Auto Logon Setting

- i. Enable Auto Logon : if you check the function OS will logon your **User Name**, **Password**, and **Domain Name**

EX : If you want to logon OS by using "Administrator", you can set it as following picture

