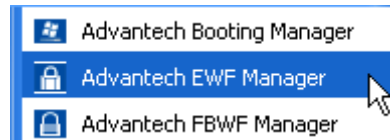
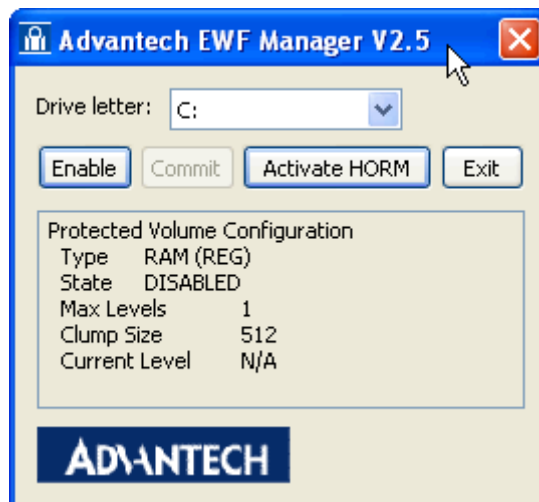


# EWF(Enhanced Write Filter)Manager SOP

- I. Open **Start** -> **All Programs** -> **Advantech** -> **Advantech EWF Manager**



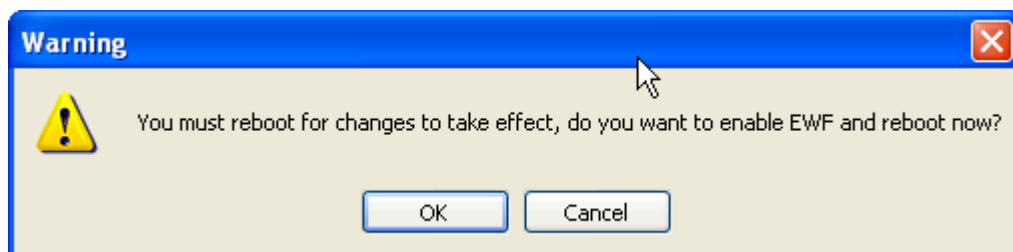
- II. You will get a user interface as following picture



- A. EWF function : If you want to protect your OS you can use the function. It will recovery your OS after restarting OS

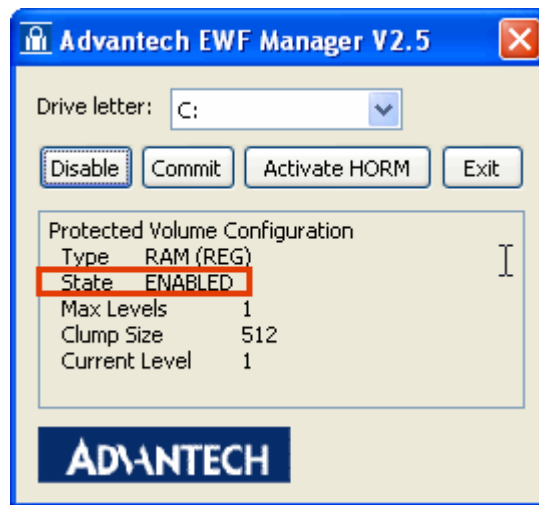
EWF enable method :

- i. Click Enable and UI will request restart OS



- ii. After restarting OS you will discover EWF state become

“Enable”



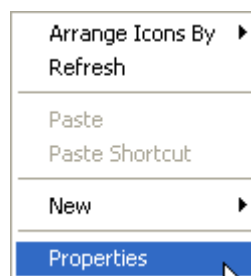
- iii. At this time, you can try to create folder or file and restart OS.

You will discover you can't modify data under C volume.

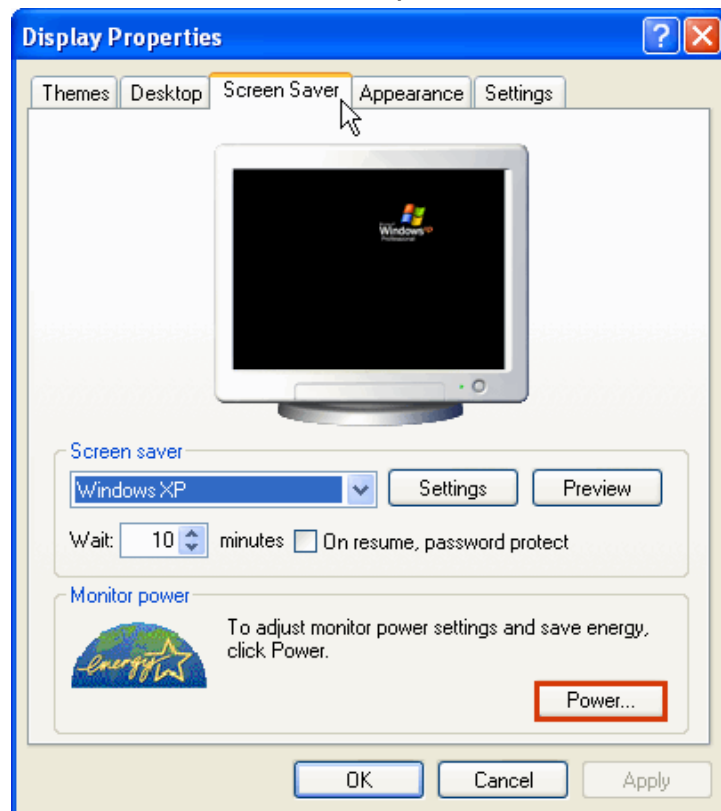
**Note** : If you want to write data at EWF enable state you can click **Commit** to write data under C volume.

**B.** HORM(Hibernate Once and Resume Many) : The function can always resume your OS after hibernating, even shutdown or crash.

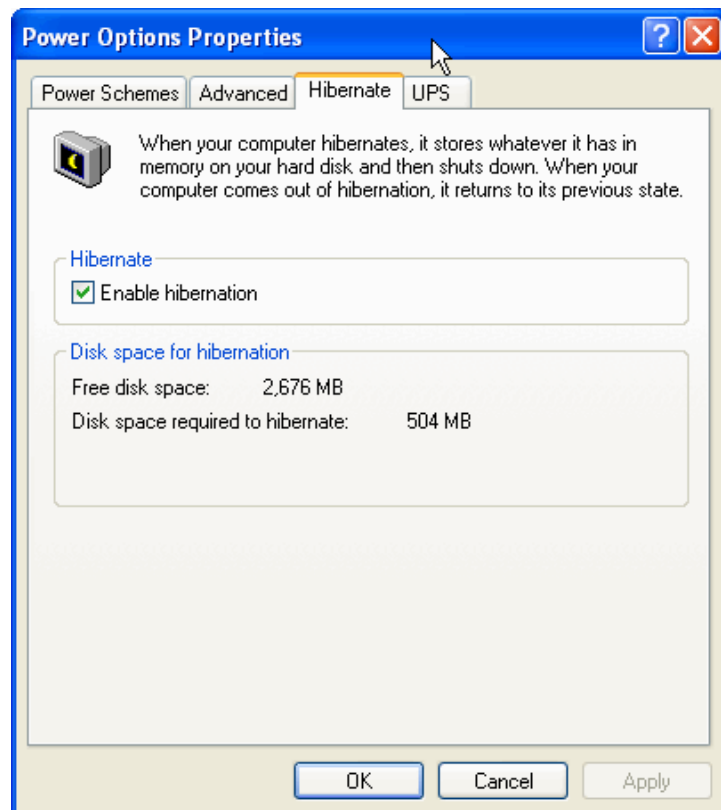
- i. Check “Enable hibernate”
  - 1. Right-Click on desktop and click “Properties”



2. Choose "Screen Saver" panel and click "Power..."



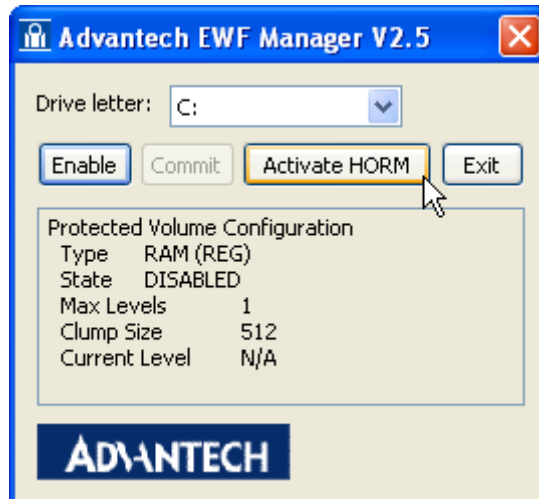
3. Check "Enable hibernate"



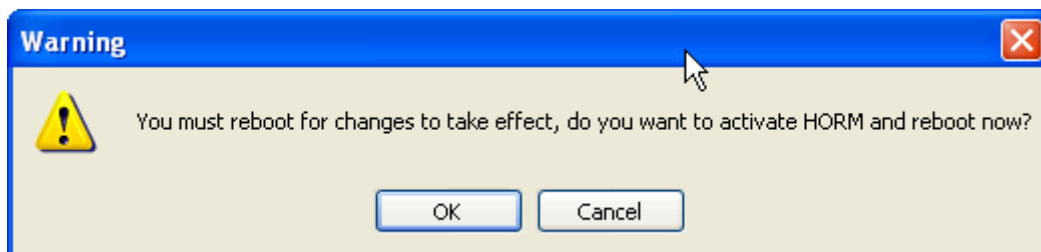
ii. Activate HORM

1. Open **Start -> All Programs -> Advantech -> Advantech EWF Manager**

2. Click **“Activate HORM”**



3. Click **“OK”** to reboot OS

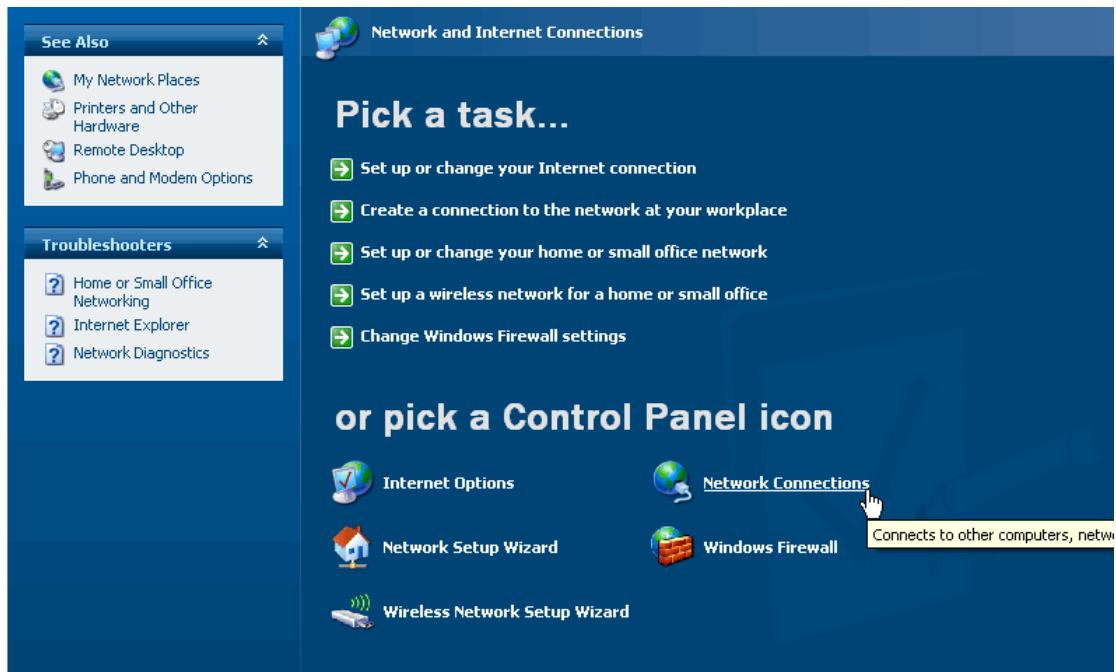


iii. Check **“Use the Welcome screen”**

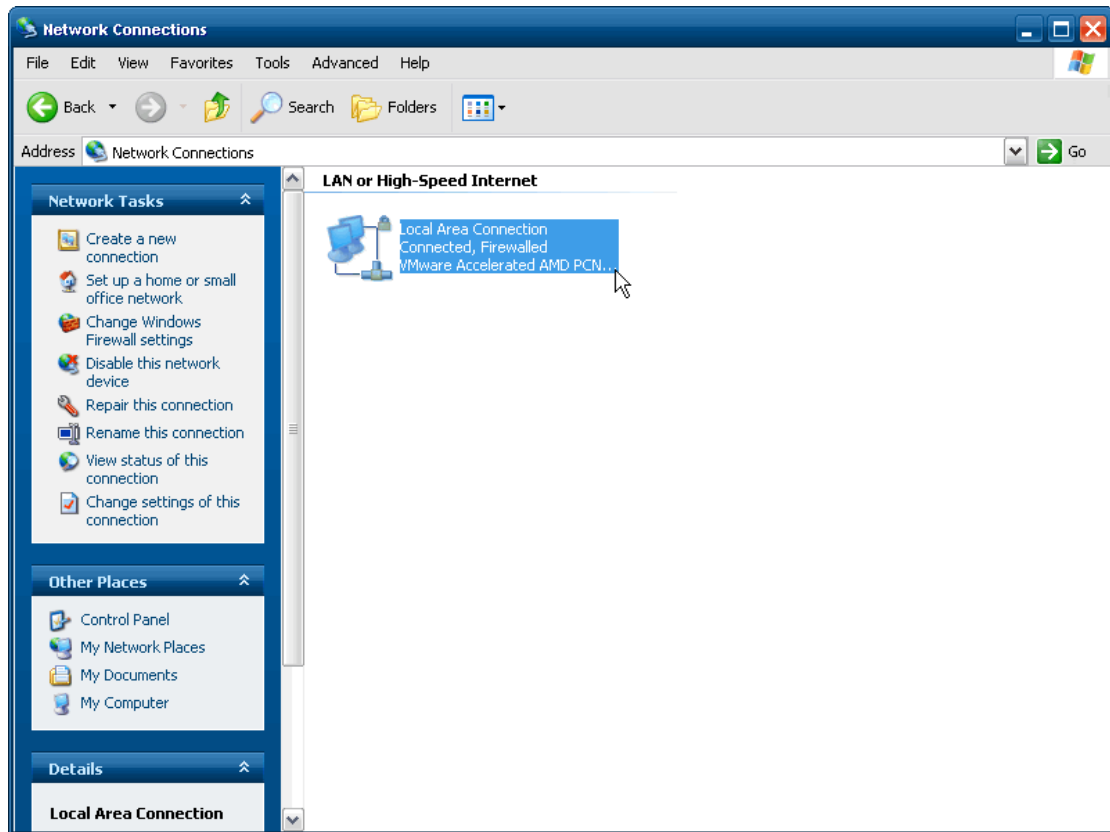
1. Open **Start -> Control Panel**



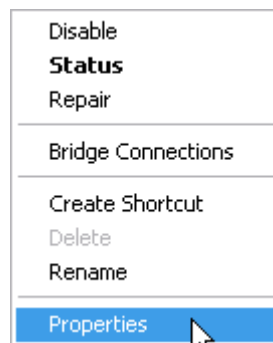
## 2. Click "Network and Internet Connections"



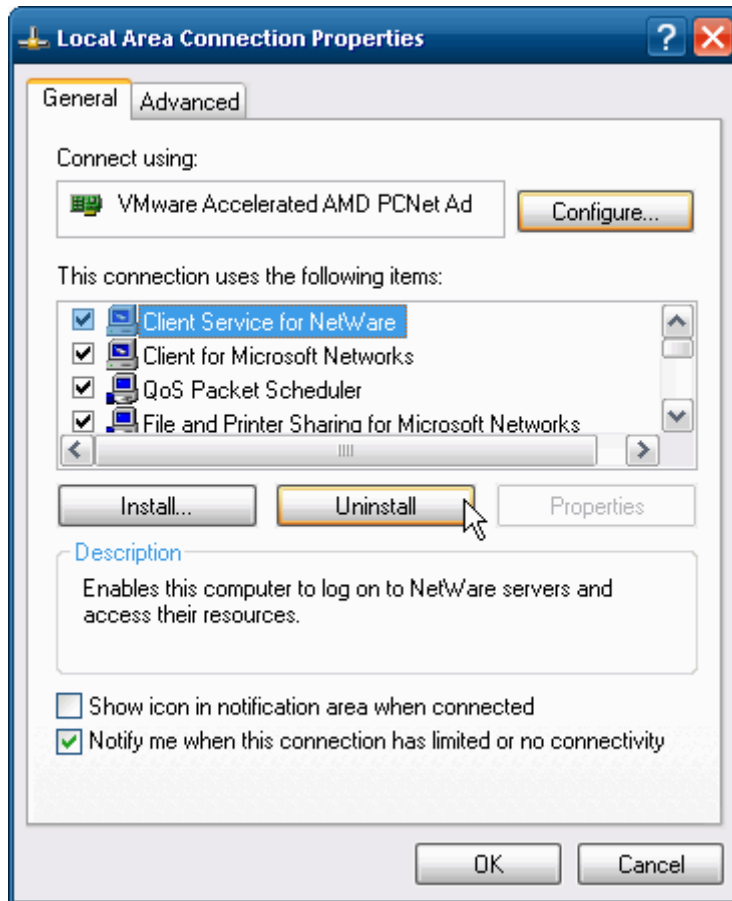
## 3. Click "Network Connection"



4. Right-Click on **“Local Area Connection”** and click properties

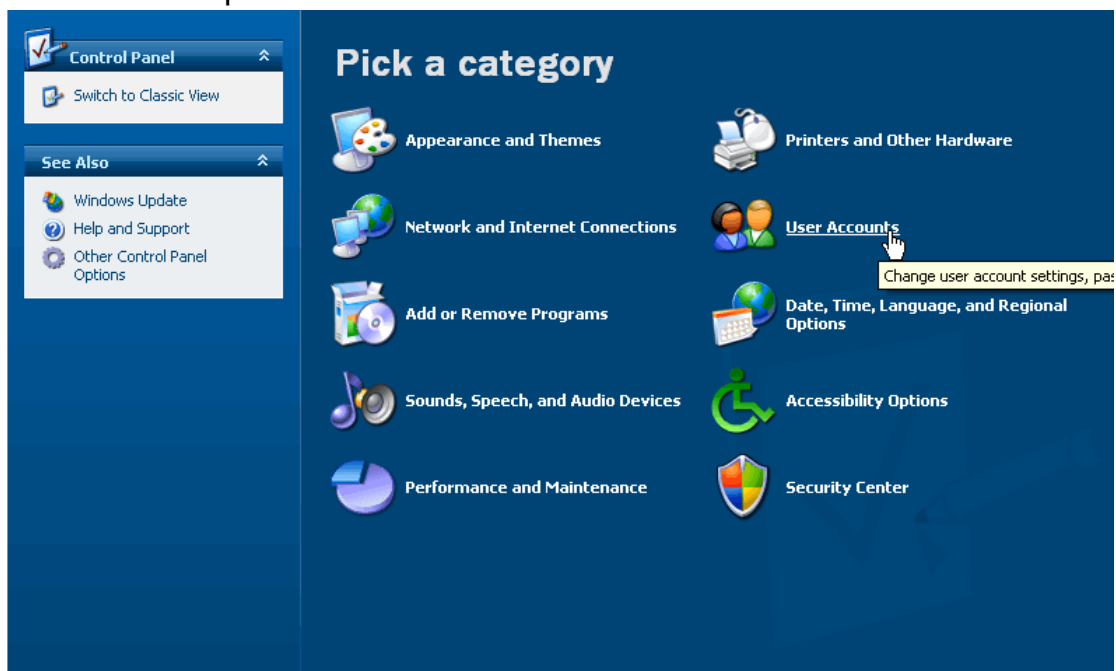


5. Uninstall “Client Service for NetWare”

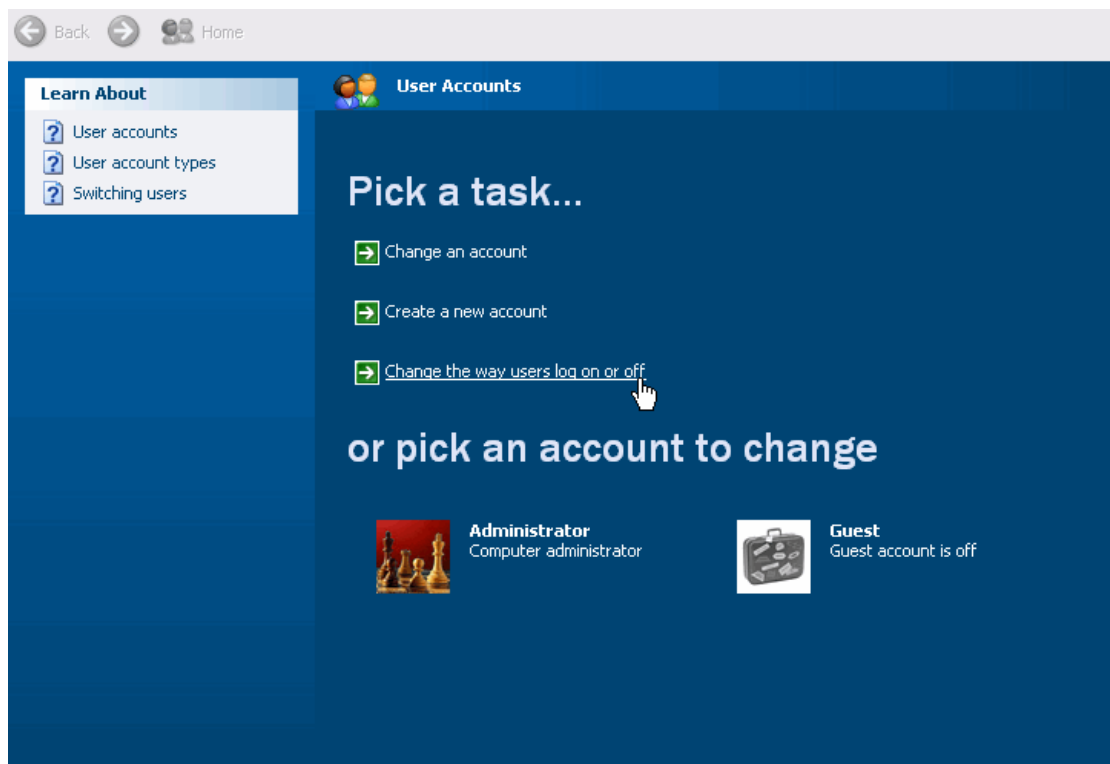


6. Click "Yes" to remove "Client Service for NetWare" and reboot OS

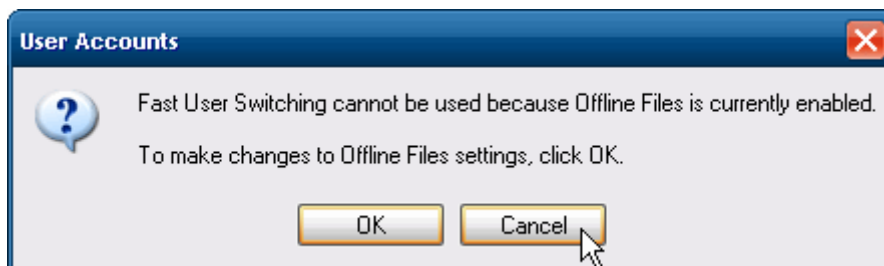
7. Open **Start** -> **Control Panel**



## 8. Click "User Accounts"

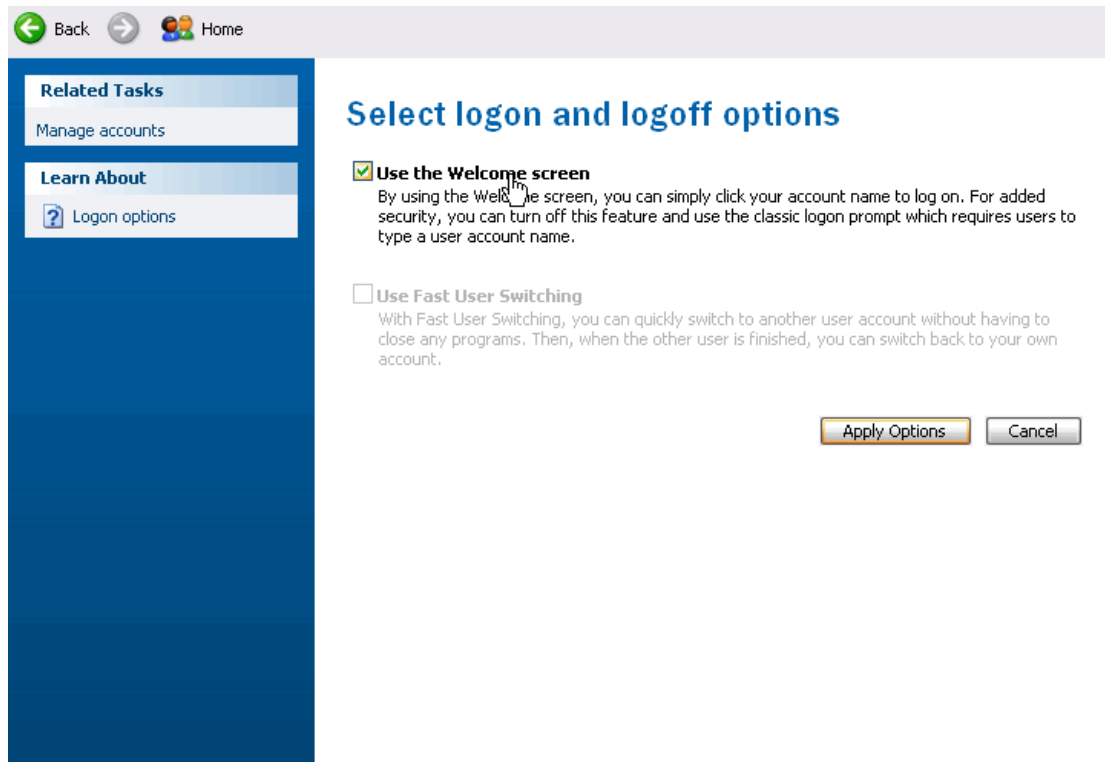


## 9. Click "Cancel"



## 10. Check "Use the Welcome screen" and Click "Apply Options"

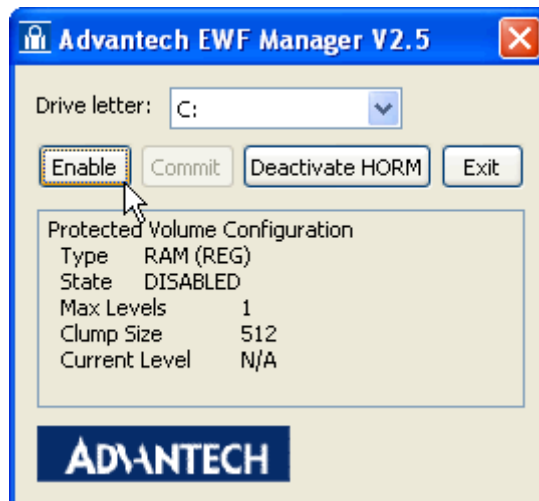




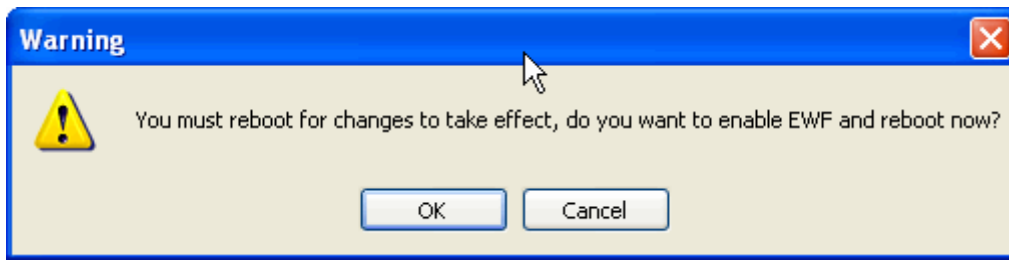
iv. Enable EWF

1. Open **Start -> All Programs -> Advantech -> Advantech EWF Manager**

2. Click "Enable"



3. Click "OK" to reboot OS

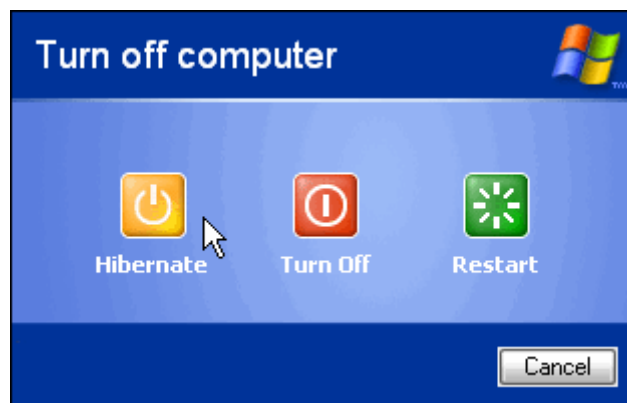
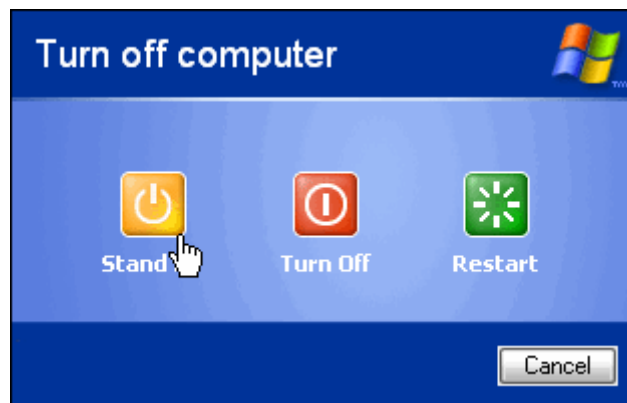


v. Run "Hibernate"

1. Open **Start** -> **Shut Down**



2. When you press "Shift" Standby will become Hibernate



vi. Enable HORM finish

vii. You can try to pull power cord after resuming  
You will discover the OS always been resuming