

# Power Suite v2.0.9

## User Manual

- Installation** ..... 1
  - Requirement ..... 1
  - Install..... 1
  - Uninstall ..... 2
- OS Enhancement Utility** ..... 3
  - Kernel Panic Reboot..... 4
  - Fast startup..... 7
  - Display Status..... 9
  - Uart Mode ..... 11
  - System Information..... 13
- Lockdown Utility** ..... 14
  - Automatic Logon..... 15
  - Boot Logo ..... 18

# Installation

---

## Requirement

- Ubuntu 20.04 or 22.04 for ARM64
- Minimum hard disk space requirement is 64GB

## Install

**Step1.** Download PowerSuite 2.0 installer “power\_suite\_installer-2.0.x.tar.gz” and put it into your device.

**Step2.** Open a Terminal from Ubuntu applications and change to the path of the file “power\_suite\_installer-2.0.x.tar.gz”

**Step3.** Run below command to install PowerSuite 2.0:

```
$ tar zxvf power_suite_installer-2.0.x.tar.gz  
$ chmod +x power_suite_installer.run  
$ ./power_suite_installer.run
```

**Step4.** After the installation is complete, please restart your computer.

## Uninstall

**Step1.** Open a Terminal from Ubuntu applications.

**Step2.** Run below command to uninstall PowerSuite 2.0:

```
$ cd /usr/local/power_suite  
$ ./powersuite_uninstall.sh
```

# OS Enhancement Utility

---

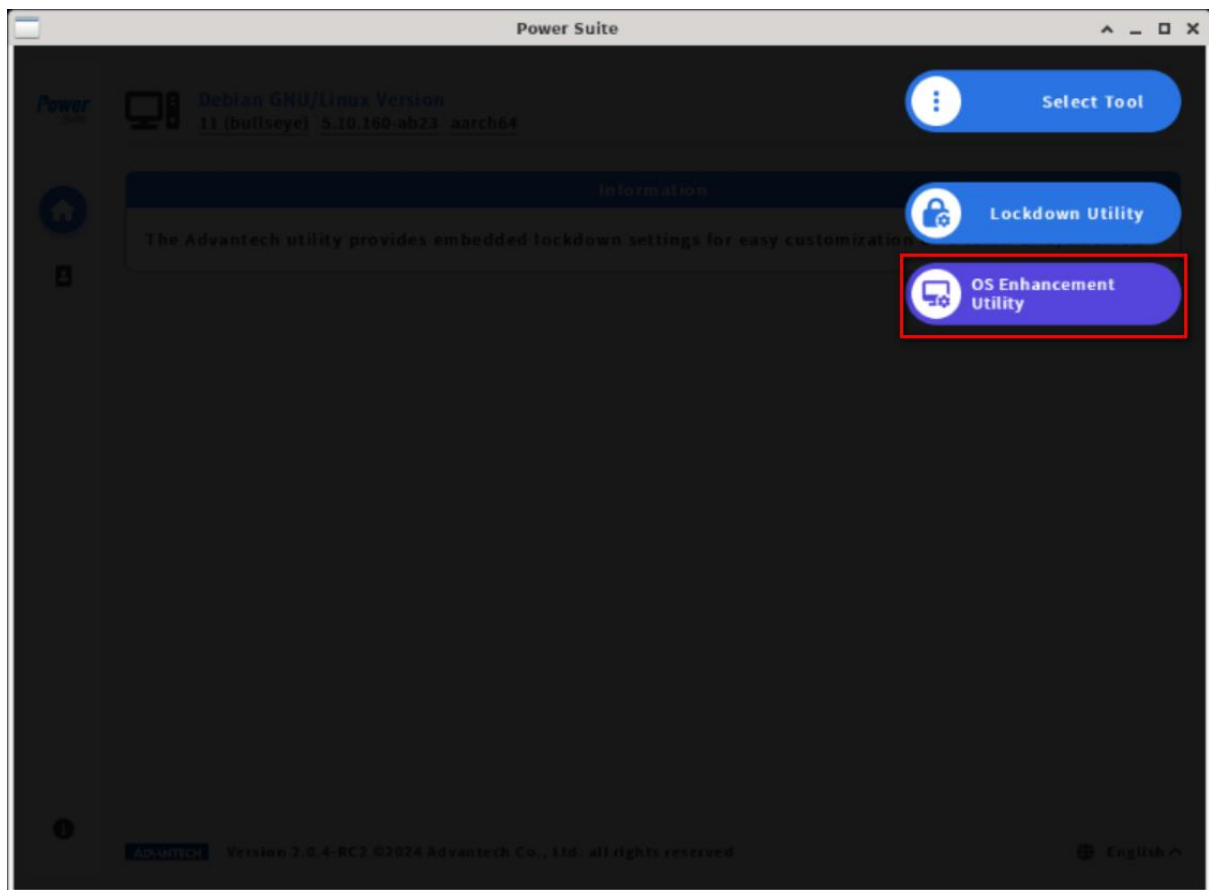
# Kernel Panic Reboot

## Brief

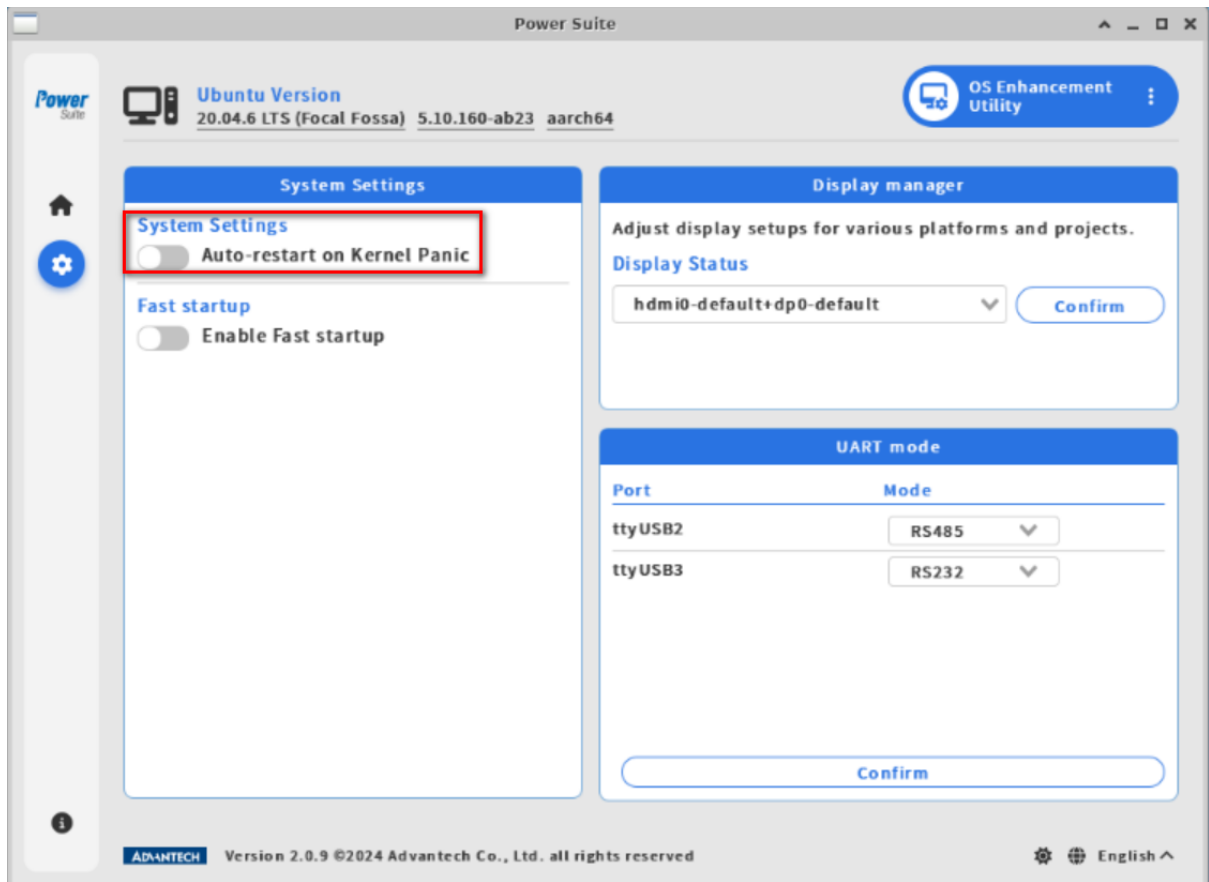
When enabled the Auto-restart on Kernel Panic feature, Linux system will automatically reboot when encountering a kernel panic to prevent the screen from freezing.

## Steps

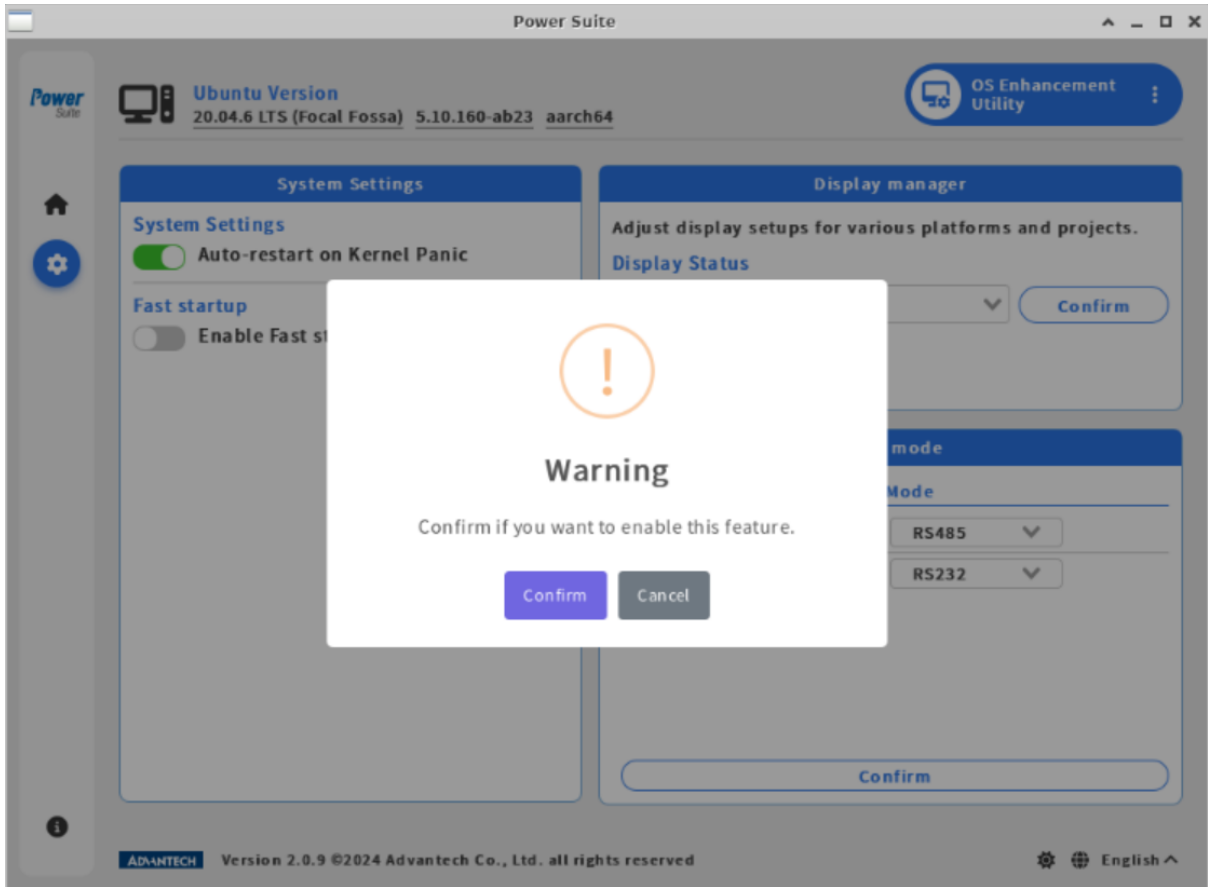
**Step1.** Select the "OS Enhancement Utility" page.



**Step2.** Click on "Auto-restart on Kernel Panic" to enable this feature.



**Step3.** Click on "Confirm" to disable or enable auto-restart.



**Step4.** Then please restart the system to apply the settings.

## Result

The next time your Linux system encounters a kernel panic, it will automatically reboot for you.

# Fast startup

## Brief

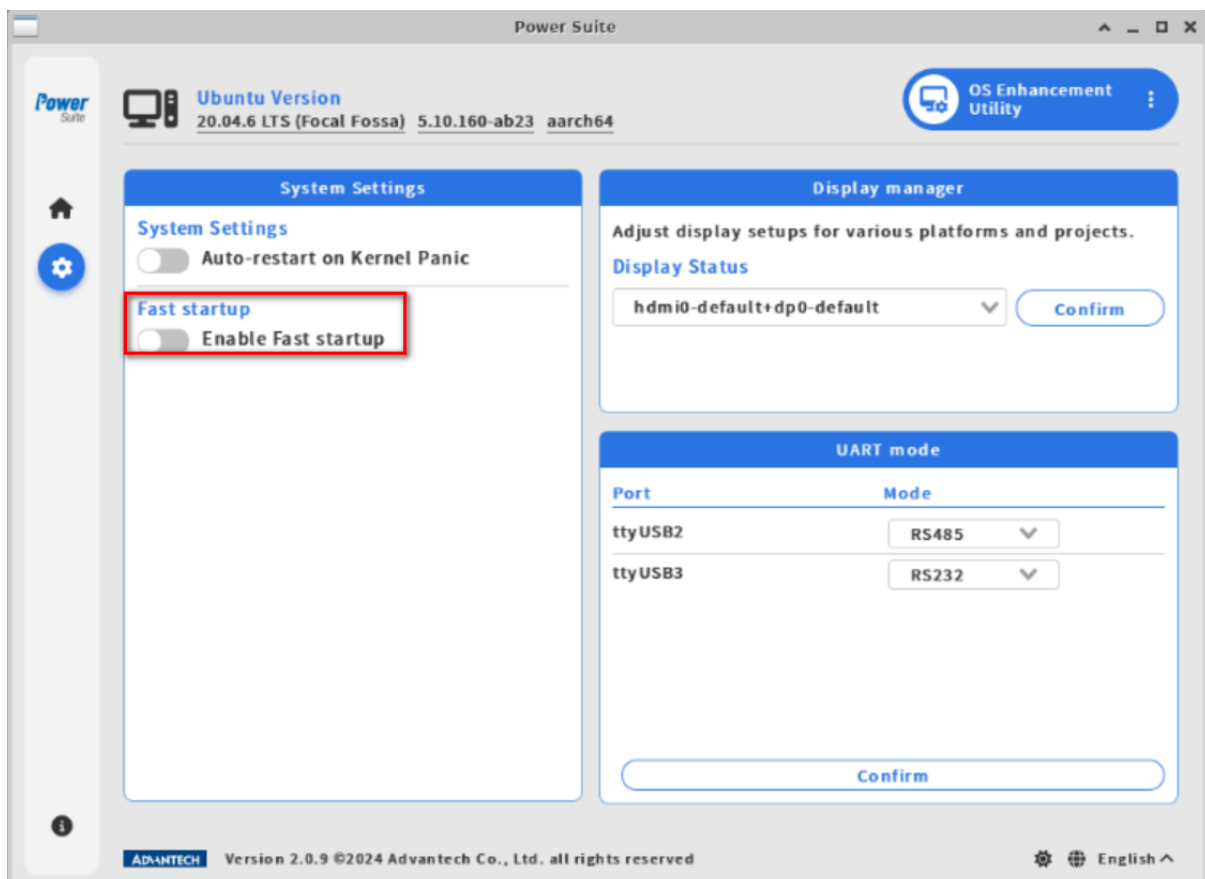
You can enable or disable system fast startup by clicking the "Fast startup" button.

## Note

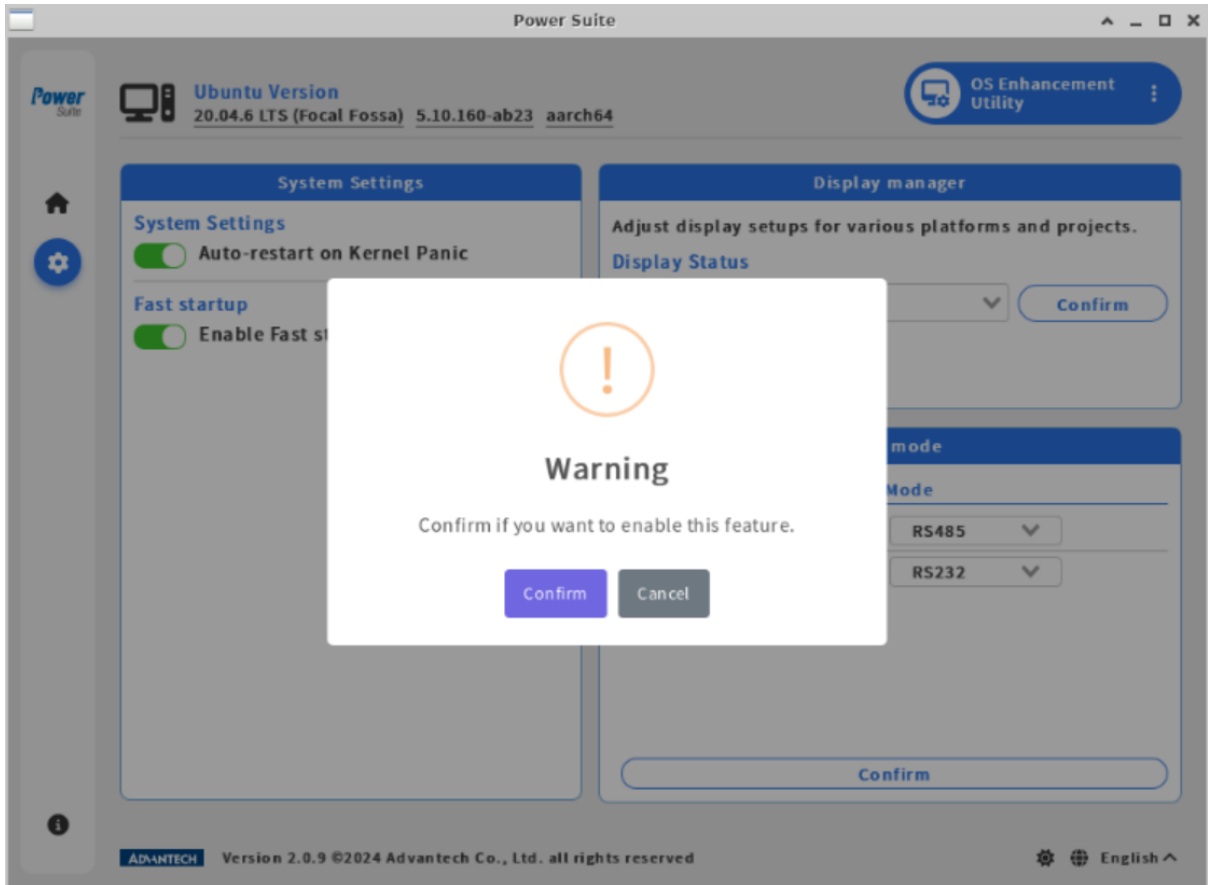
- Restart the system to take effect.

## Steps

**Step1.** Click on "Fast startup" switch button.



**Step2.** Click on "Confirm" to disable or enable fast startup.



# Display Status

## Brief

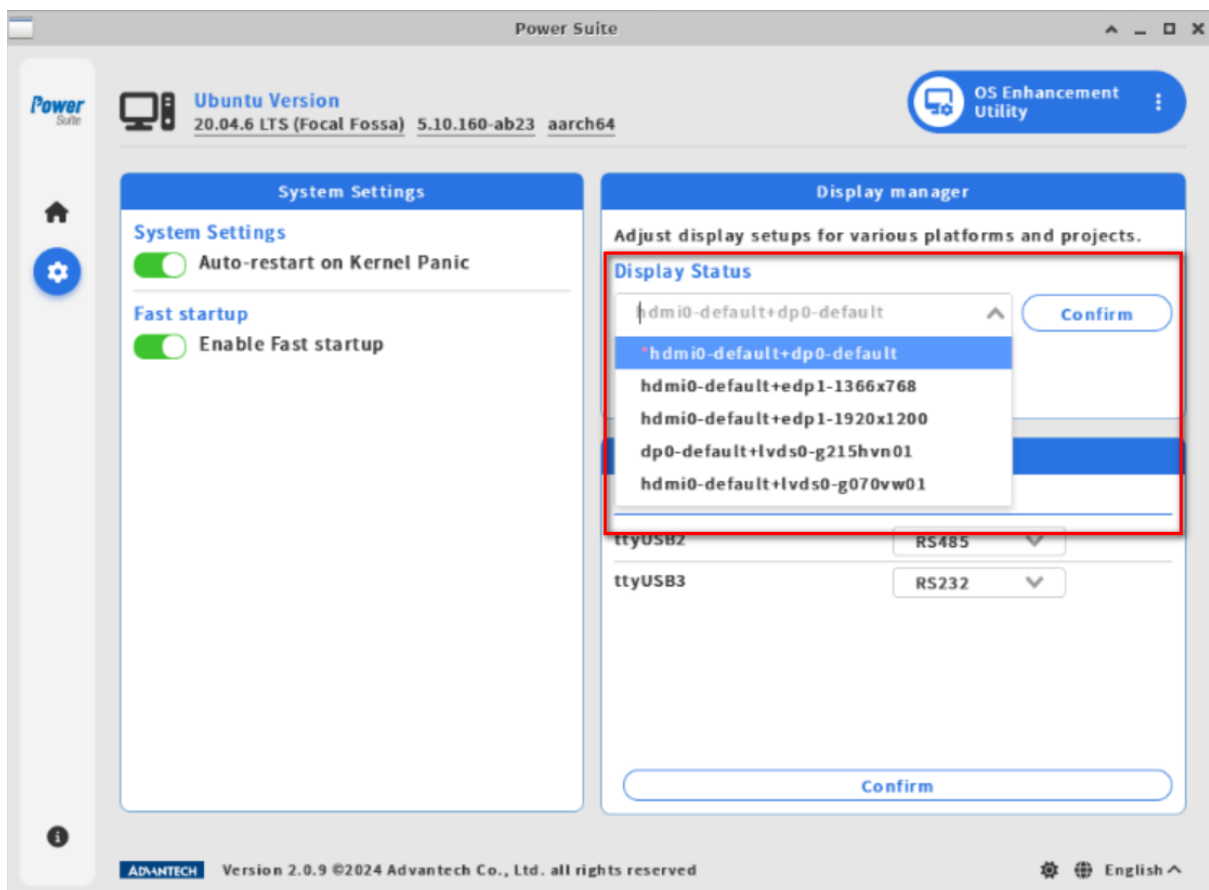
Set the display parameters of the system.

## Note

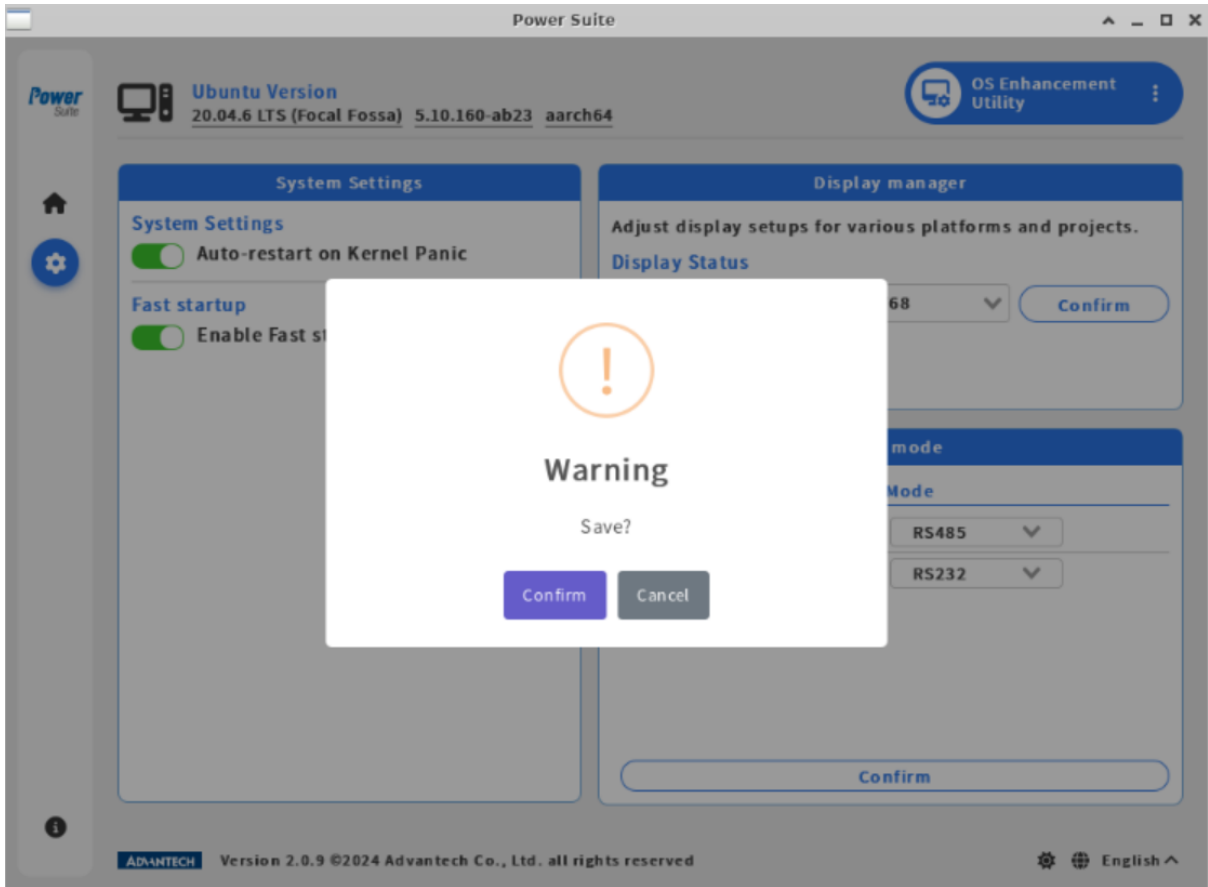
- Restart the system to take effect.

## Steps

**Step1.** Click on "Display Status" drop-down list butto to select.



**Step2.** Click on "Confirm" to change the settings.



# Uart Mode

## Brief

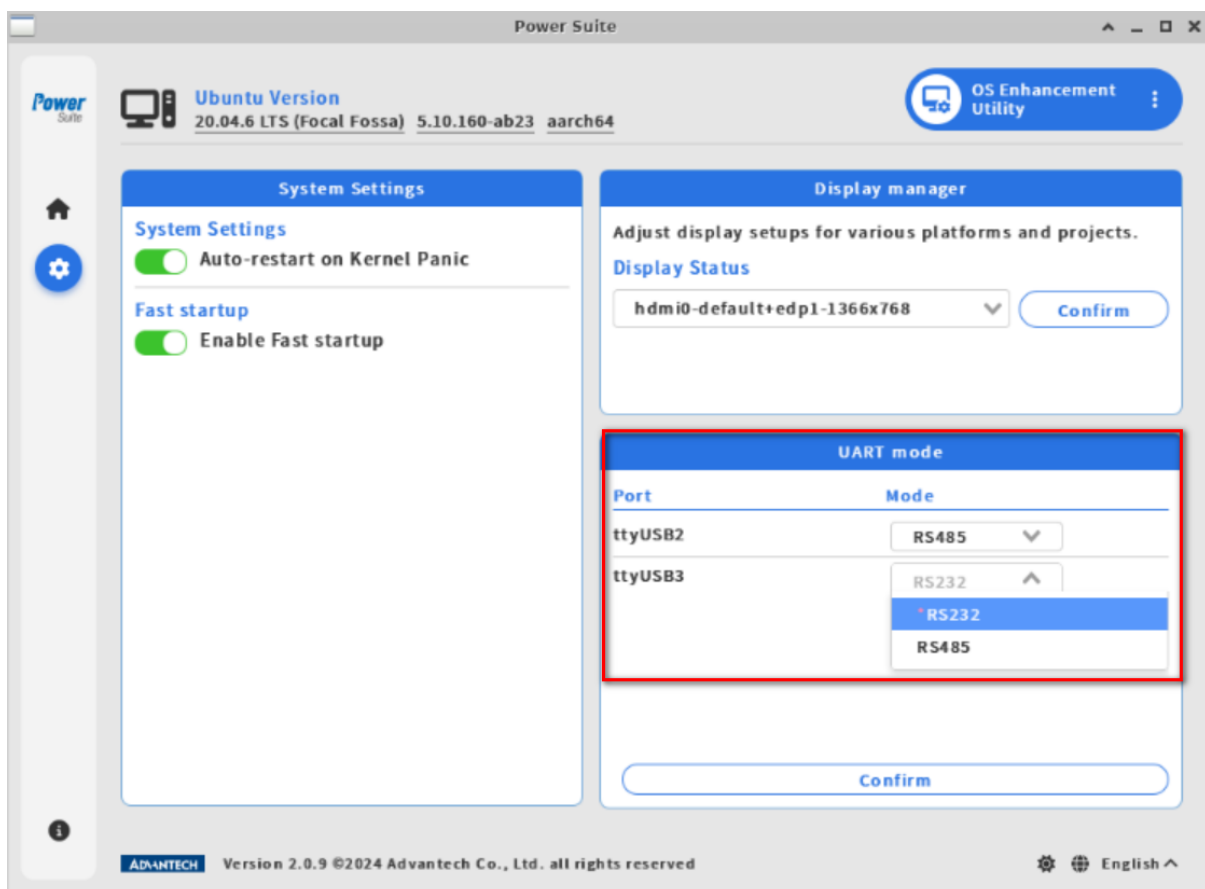
Set the uart mode of the system. Used to switch the uart mode RS232 or RS485.

## Note

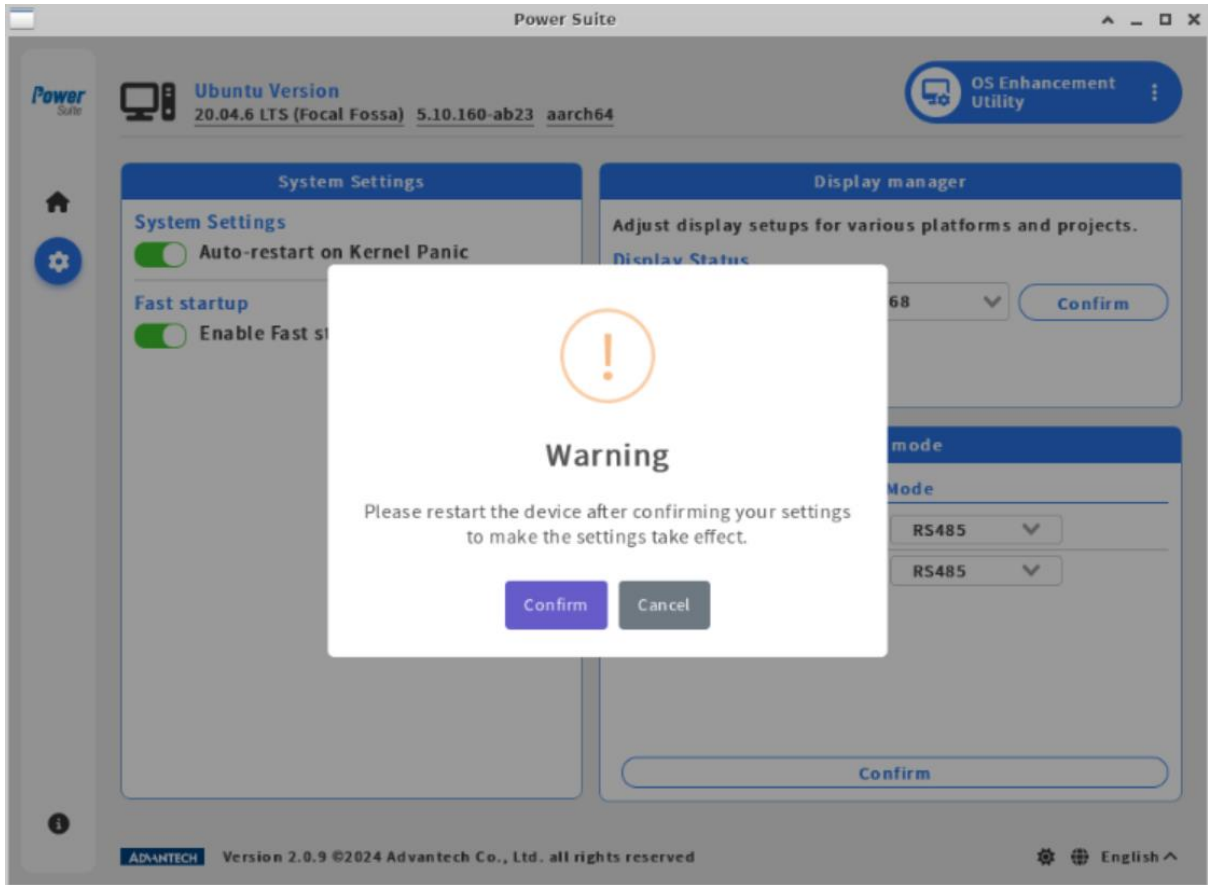
- Restart the system to take effect.
- The drop-down selection box does not appear if the hardware does not support it.

## Steps

**Step1.** Click on "Mode" drop-down list butto to select.



**Step2.** Click on "Confirm" to change the settings.



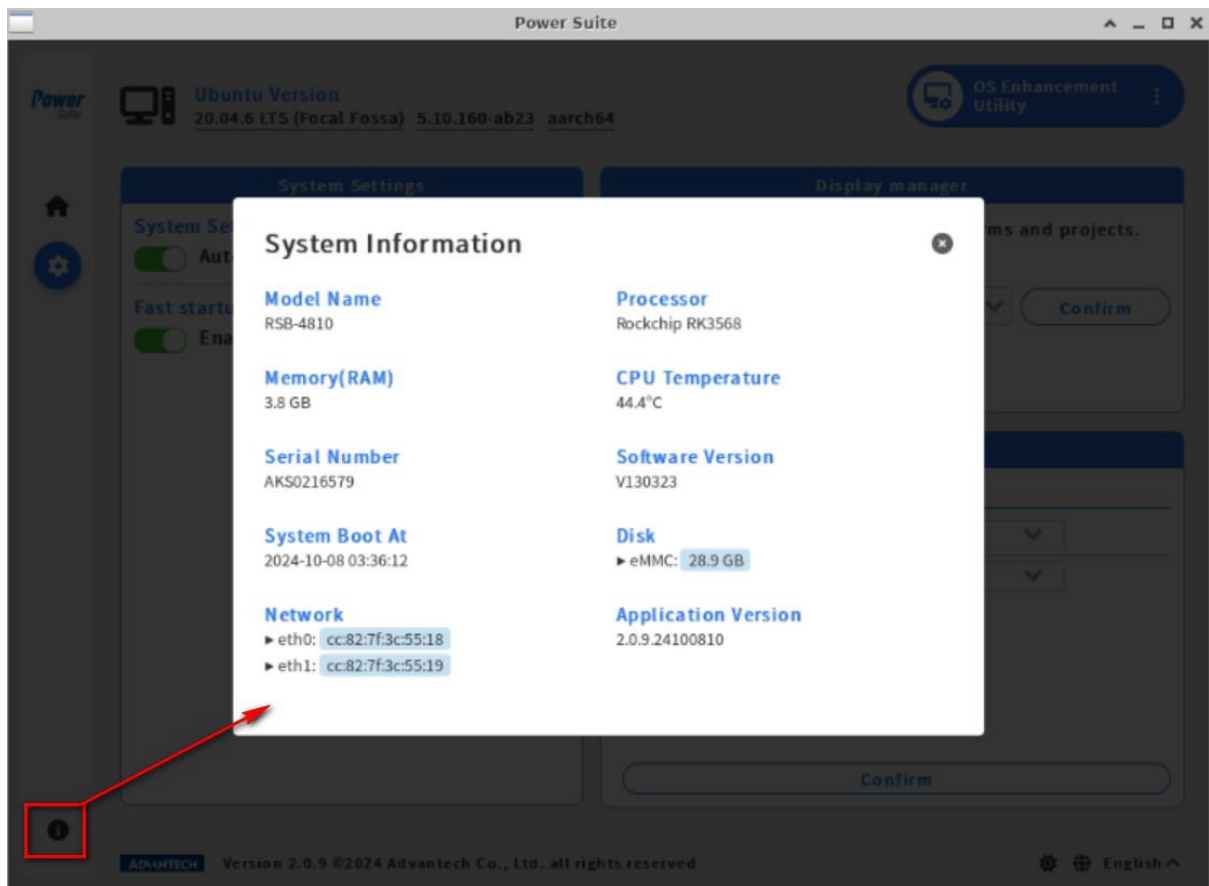
# System Information

## Brief

Display board system information.

## Steps

**Step1.** Click on “System info” button.



# Lockdown Utility

---

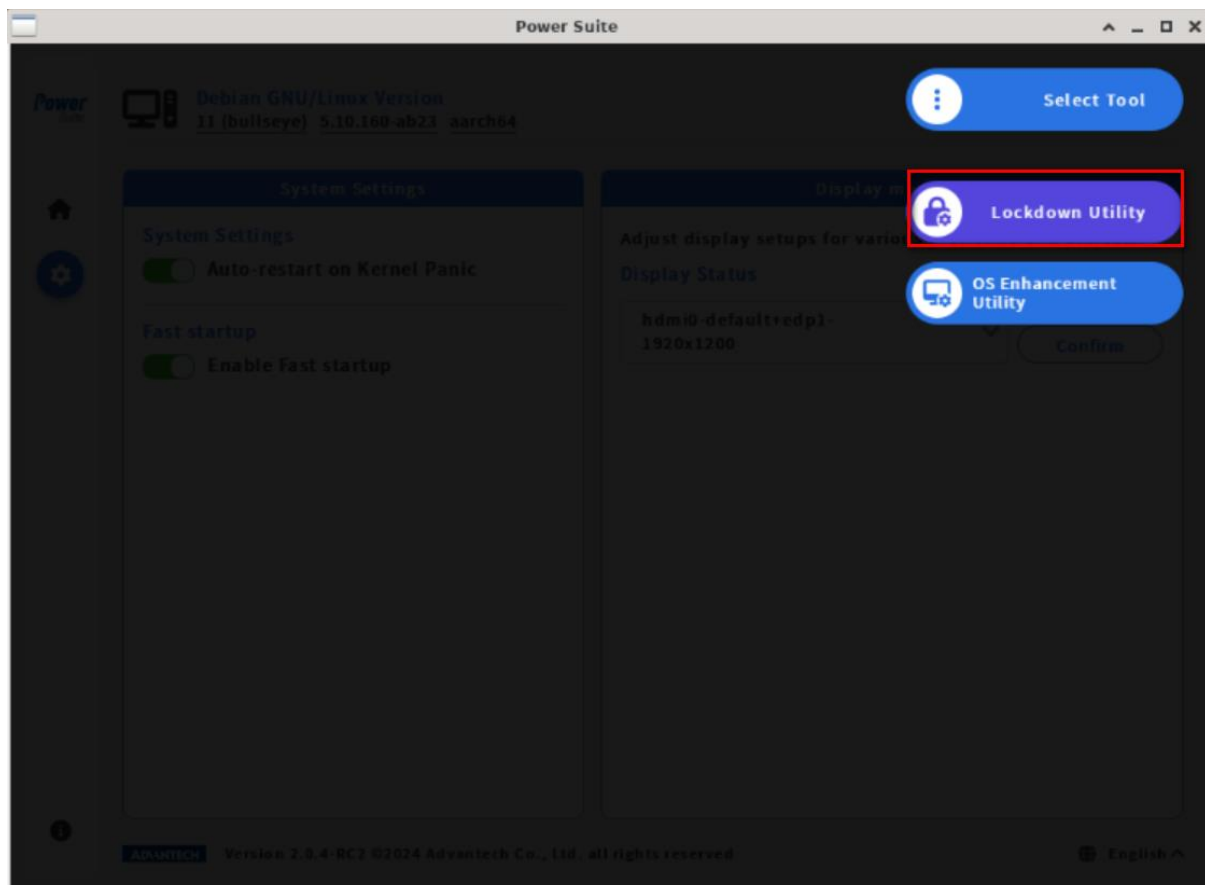
# Automatic Logon

## Brief

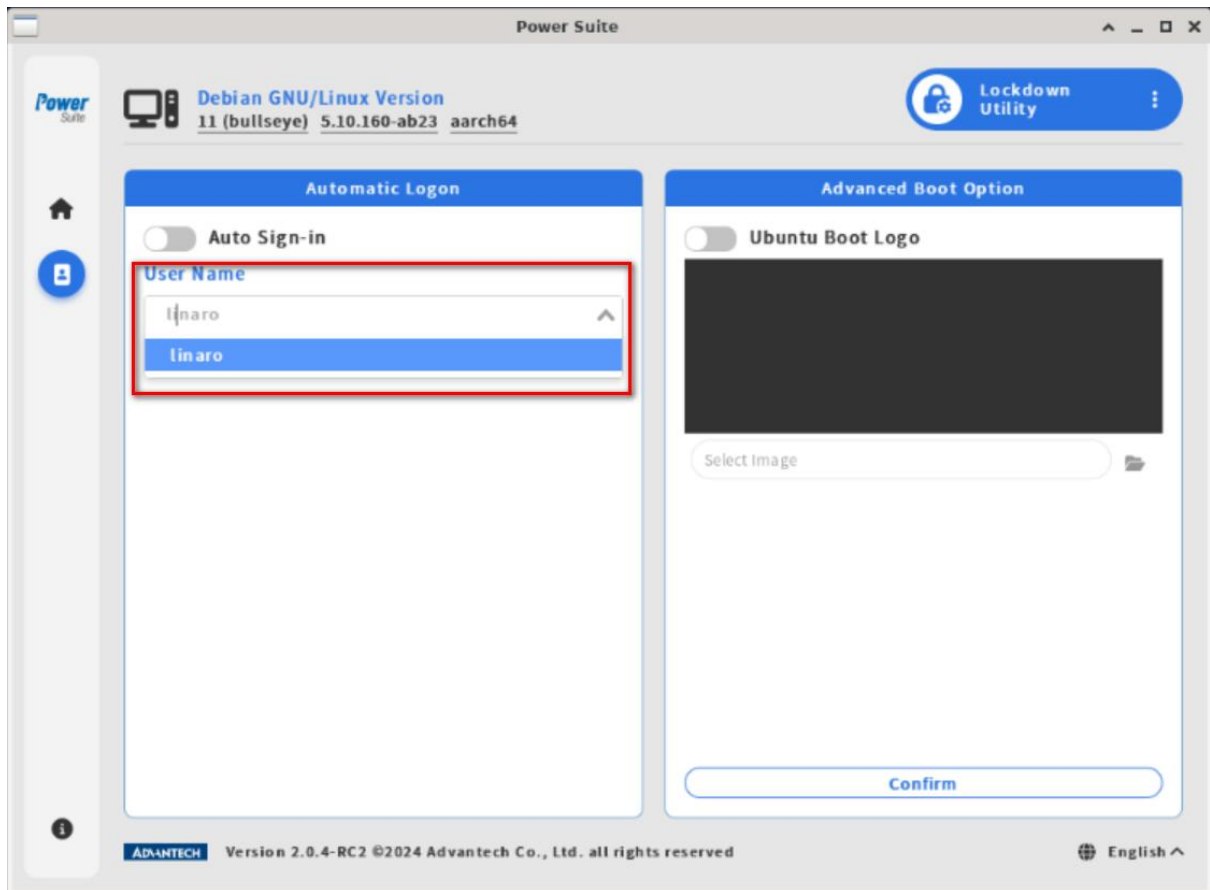
Enabling this function to automatically logon with specific user when system boot up.

## Steps

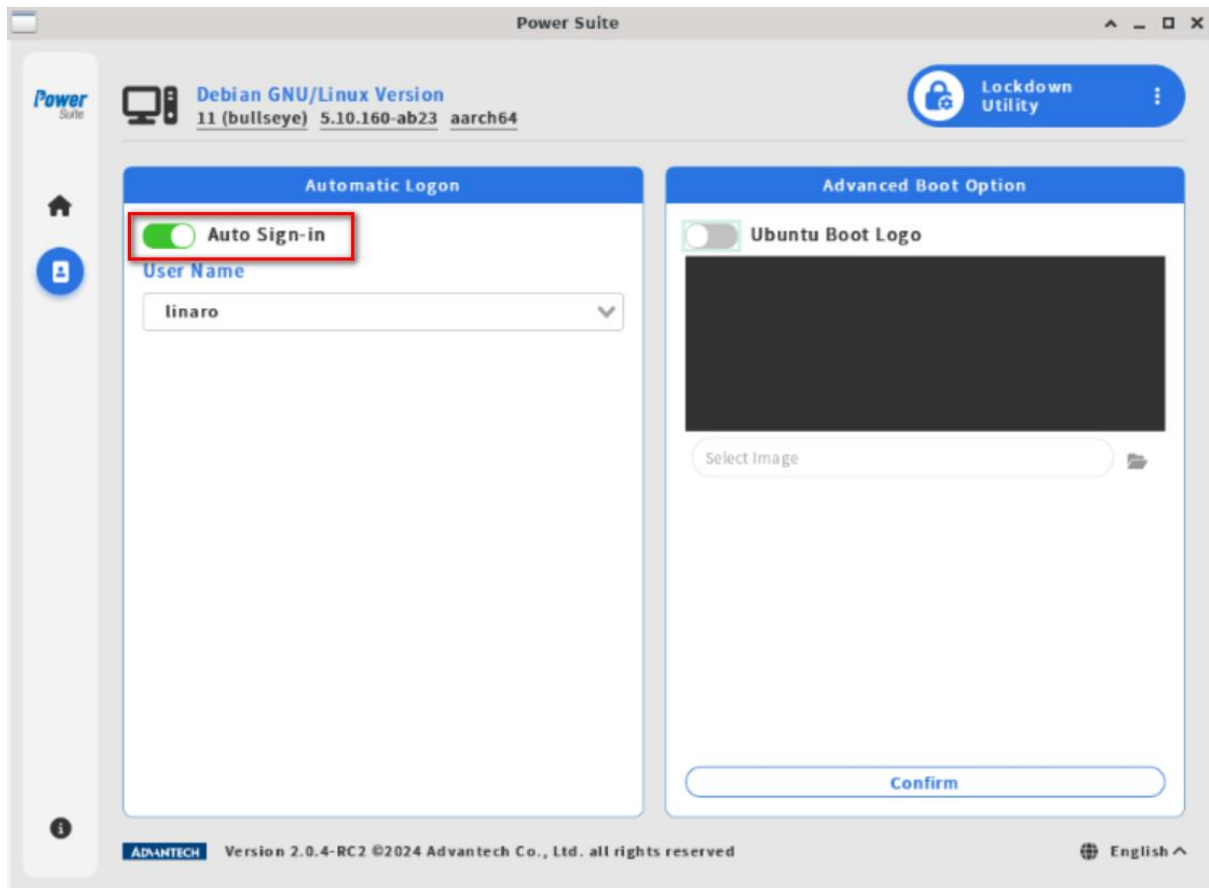
**Step1.** Select the “Lockdown Utility” page.



**Step2.** From Automatic Logon area, choose a user from drop down menu.



**Step3.** Click on "Auto Sign-in" to enable automatic login feature.



## Result

Next time the system is rebooted, OS will automatically sign-in with the specific user account.

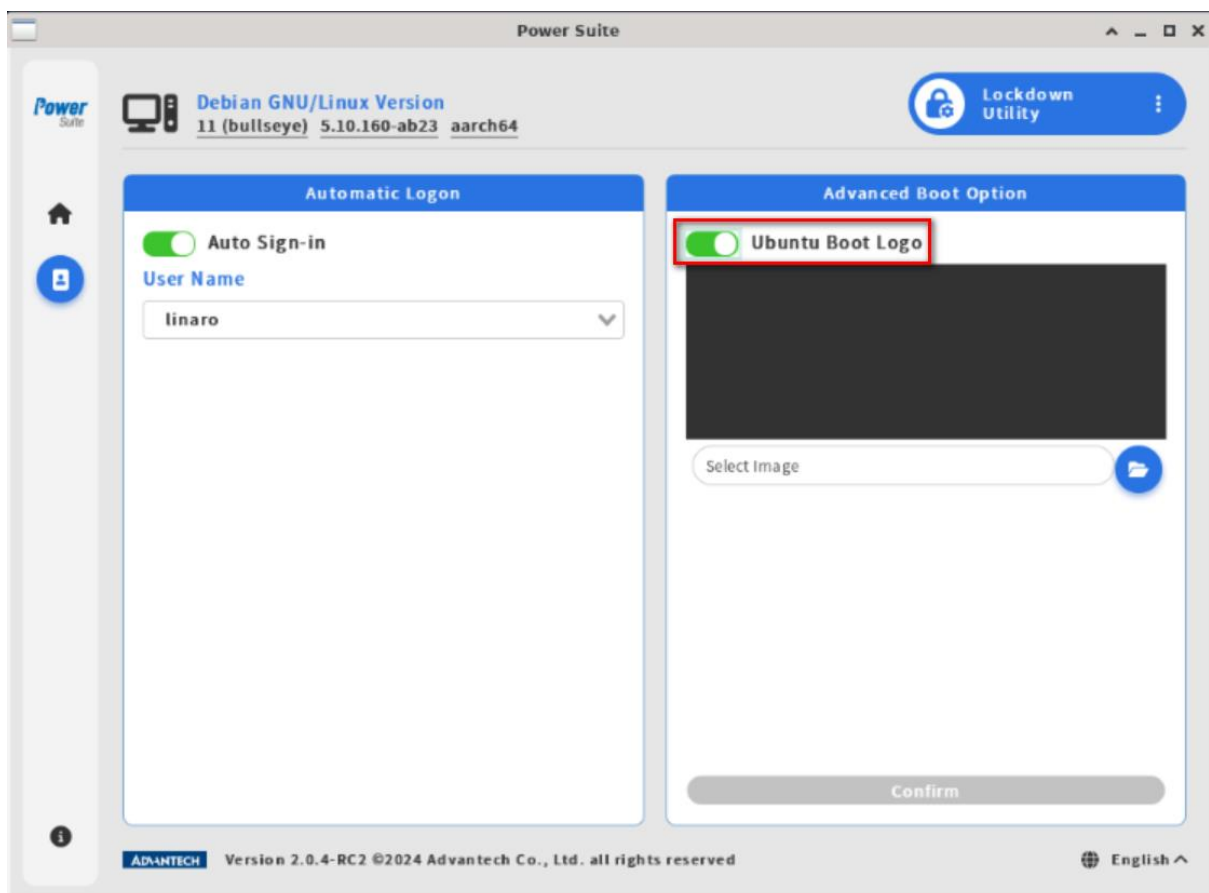
# Boot Logo

## Brief

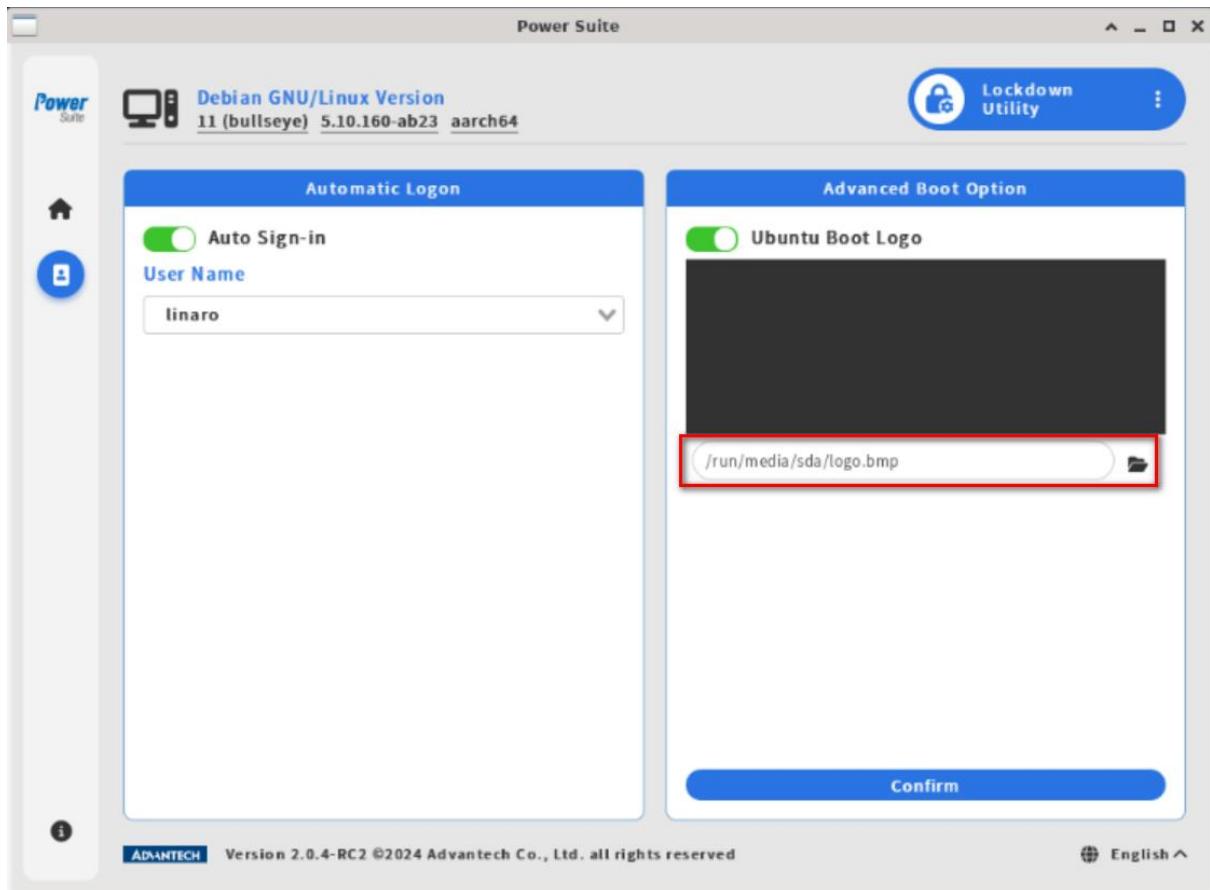
You can select the image you want to replace it to the system logo.

## Steps

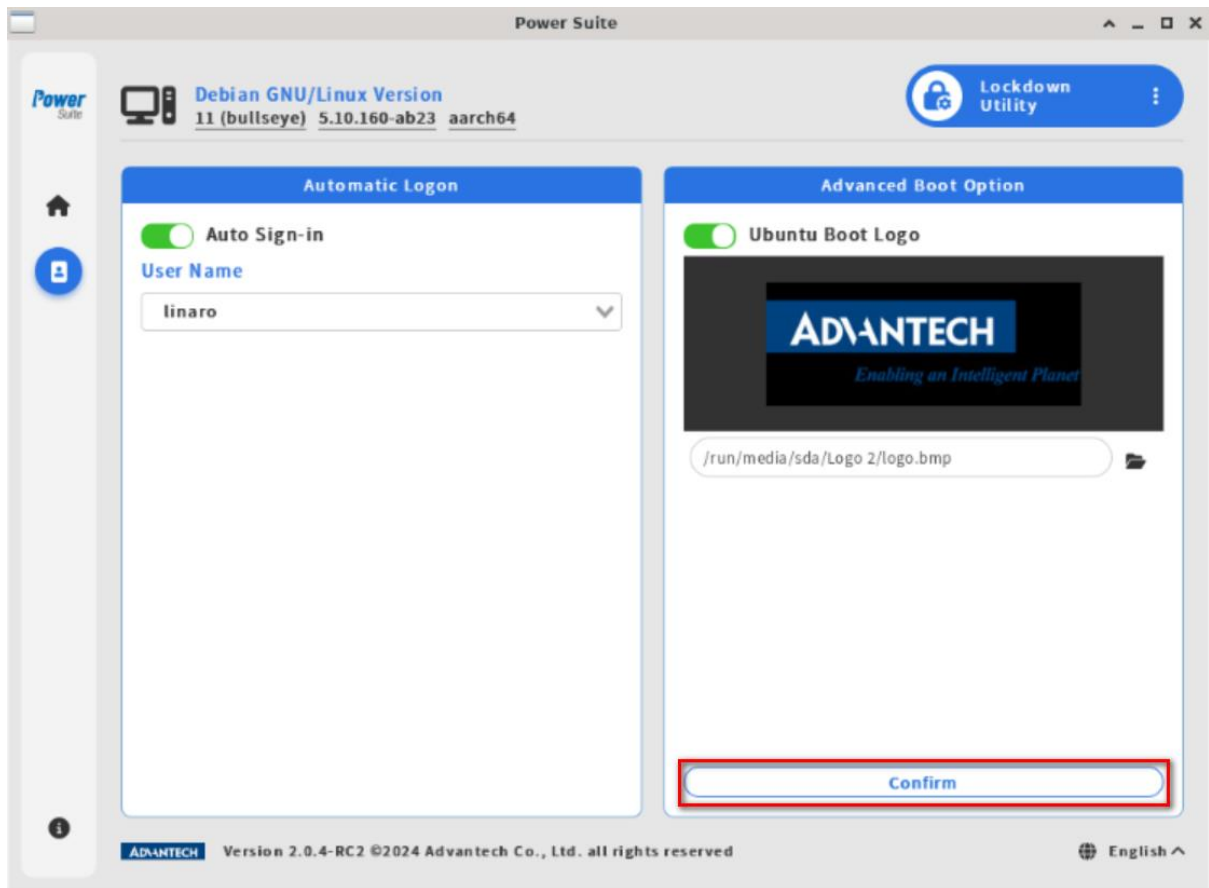
**Step1.** Click on “Boot Logo” switch button.



**Step2.** Click on “Folder selection” button.



**Step3.** Click on “Confirm” button.



## Result

After restarting, you find that the system boot log has been replaced.